

Datasheet for ABIN2778107  
**anti-PARP16 antibody (Middle Region)**[Go to Product page](#)[1 Image](#)[1 Publication](#)

## Overview

Quantity:	100 µL
Target:	PARP16
Binding Specificity:	Middle Region
Reactivity:	Human, Mouse, Rat, Guinea Pig, Horse, Pig, Rabbit, Cow, Dog
Host:	Rabbit
Clonality:	Polyclonal
Conjugate:	This PARP16 antibody is un-conjugated
Application:	Western Blotting (WB), Immunohistochemistry (IHC)

## Product Details

Immunogen:	The immunogen is a synthetic peptide directed towards the middle region of human PARP16
Sequence:	PKYFVVTNNQ LLRVKYLIVY SQKPPKSRAS SQLSWFSSHW FVMISLYLL
Predicted Reactivity:	Cow: 79%, Dog: 86%, Guinea Pig: 79%, Horse: 86%, Human: 100%, Mouse: 86%, Pig: 80%, Rabbit: 86%, Rat: 86%
Characteristics:	This is a rabbit polyclonal antibody against PARP16. It was validated on Western Blot using a cell lysate as a positive control.
Purification:	Affinity Purified

## Target Details

Target:	PARP16
---------	--------

## Target Details

Alternative Name:	PARP16 ( <a href="#">PARP16 Products</a> )
Background:	<p>Poly(ADP-ribosyl)ation is an immediate DNA-damage-dependent post-translational modification of histones and other nuclear proteins that contributes to the survival of injured proliferating cells. PARP16 is a member of poly(ADP-ribose) polymerases (PARPs) family that is encoded by different genes and displaying a conserved catalytic domain in which PARP-1 (113 kDa), the founding member, and PARP-2 (62 kDa) are so far the sole enzymes whose catalytic activity has been shown to be immediately stimulated by DNA strand breaks. A large repertoire of sequences encoding novel PARPs now extends considerably the field of poly(ADP-ribosyl)ation reactions to various aspects of the cell biology including cell proliferation and cell death. Some of these new members interact with each other, share common partners and common subcellular localizations suggesting possible fine tuning in the regulation of this post-translational modification of proteins.</p> <p>Alias Symbols: C15orf30, FLJ20509, FLJ25281, pART15</p> <p>Protein Interaction Partner: GMCL1, UBC, NEDD4,</p> <p>Protein Size: 323</p>
Molecular Weight:	36 kDa
Gene ID:	54956
NCBI Accession:	<a href="#">NM_017851</a> , <a href="#">NP_060321</a>

## Application Details

Application Notes:	Optimal working dilutions should be determined experimentally by the investigator.
Comment:	Antigen size: 323 AA
Restrictions:	For Research Use only

## Handling

Format:	Liquid
Concentration:	Lot specific
Buffer:	Liquid. Purified antibody supplied in 1x PBS buffer with 0.09 % (w/v) sodium azide and 2 % sucrose.
Preservative:	Sodium azide
Precaution of Use:	This product contains Sodium azide: a POISONOUS AND HAZARDOUS SUBSTANCE which

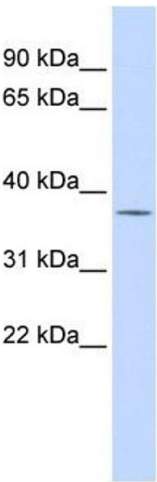
## Handling

	should be handled by trained staff only.
Handling Advice:	Avoid repeated freeze-thaw cycles.
Storage:	-20 °C
Storage Comment:	For short term use, store at 2-8°C up to 1 week. For long term storage, store at -20°C in small aliquots to prevent freeze-thaw cycles.

## Publications

Product cited in:	Gerhard, Wagner, Feingold, Shenmen, Grouse, Schuler, Klein, Old, Rasooly, Good, Guyer, Peck, Derge, Lipman, Collins, Jang, Sherry, Feolo, Misquitta, Lee, Rotmistrovsky, Greenhut, Schaefer, Buetow et al.: "The status, quality, and expansion of the NIH full-length cDNA project: the Mammalian Gene Collection (MGC). ..." in: <b>Genome research</b> , Vol. 14, Issue 10B, pp. 2121-7, (2004) ( <a href="#">PubMed</a> ).
-------------------	--

## Images



**Western Blotting**

**Image 1.** WB Suggested Anti-PAntibody Titration: 0.2-1 ug/ml ELISA Titer: 1:312500 Positive Control: 293T cell lysate Pis supported by BioGPS gene expression data to be expressed in HEK293T