

Datasheet for ABIN2778112  
**anti-PARP2 antibody (Middle Region)**

## 3 Images

[Go to Product page](#)

## Overview

Quantity:	100 µL
Target:	PARP2
Binding Specificity:	Middle Region
Reactivity:	Human, Mouse, Rat, Dog, Rabbit, Cow, Horse, Guinea Pig
Host:	Rabbit
Clonality:	Polyclonal
Conjugate:	This PARP2 antibody is un-conjugated
Application:	Western Blotting (WB), Immunofluorescence (IF)

## Product Details

Immunogen:	The immunogen is a synthetic peptide directed towards the middle region of human PARP2
Sequence:	LLDLFEVEKD GEKEAFREDL HNRMLLWHGS RMSNWVGILS HGLRIAHPEA
Predicted Reactivity:	Cow: 86%, Dog: 86%, Guinea Pig: 92%, Horse: 86%, Human: 100%, Mouse: 86%, Rabbit: 86%, Rat: 92%
Characteristics:	This is a rabbit polyclonal antibody against PARP2. It was validated on Western Blot using a cell lysate as a positive control.
Purification:	Affinity Purified

## Target Details

Target:	PARP2
---------	-------

## Target Details

Alternative Name:	PARP2 ( <a href="#">PARP2 Products</a> )
Background:	<p>PARP2 contains a catalytic domain and is capable of catalyzing a poly(ADP-ribosyl)ation reaction. This protein has a catalytic domain which is homologous to that of poly (ADP-ribosyl) transferase, but lacks an N-terminal DNA binding domain which activates the C-terminal catalytic domain of poly (ADP-ribosyl) transferase. The basic residues within the N-terminal region of this protein may bear potential DNA-binding properties, and may be involved in the nuclear and/or nucleolar targeting of protein.</p> <p>Alias Symbols: ADPRT2, PARP-2, ADPRTL2, ADPRTL3, pADPRT-2</p> <p>Protein Interaction Partner: UHRF1, Npm1, TFAP4, UBC, RNF146, H3F3A, CBX5, TRIM28, CHD1L, TNP2, HSPA2, BUB3, CASP8, XRCC1, PARP1, CENPB, CENPA,</p> <p>Protein Size: 534</p>
Molecular Weight:	61 kDa
Gene ID:	10038
NCBI Accession:	<a href="#">NM_005484</a> , <a href="#">NP_005475</a>
UniProt:	<a href="#">Q9UGN5</a>
Pathways:	<a href="#">DNA Damage Repair</a>

## Application Details

Application Notes:	Optimal working dilutions should be determined experimentally by the investigator.
Comment:	Antigen size: 534 AA
Restrictions:	For Research Use only

## Handling

Format:	Liquid
Concentration:	Lot specific
Buffer:	Liquid. Purified antibody supplied in 1x PBS buffer with 0.09 % (w/v) sodium azide and 2 % sucrose.
Preservative:	Sodium azide
Precaution of Use:	This product contains Sodium azide: a POISONOUS AND HAZARDOUS SUBSTANCE which should be handled by trained staff only.

Handling

Handling Advice:	Avoid repeated freeze-thaw cycles.
Storage:	-20 °C
Storage Comment:	For short term use, store at 2-8°C up to 1 week. For long term storage, store at -20°C in small aliquots to prevent freeze-thaw cycles.

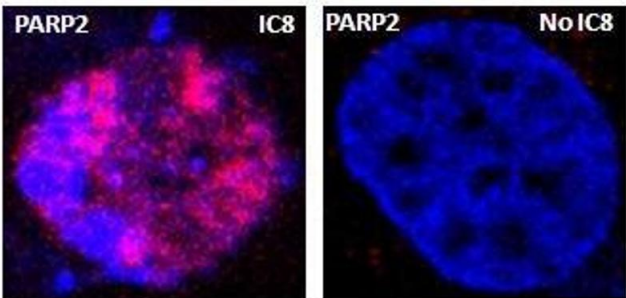
Images



PARP2

Western Blotting

**Image 1.** WB Suggested Anti-PAntibody Titration: 0.2-1 ug/ml Positive Control: Raji cell lysate Pis strongly supported by BioGPS gene expression data to be expressed in Human Raji cells

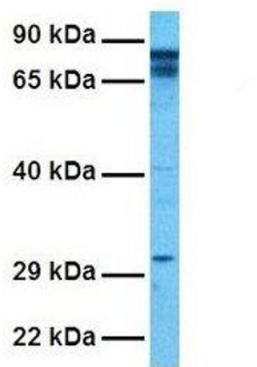


Red: PARP2  
Blue: DAPI

Immunofluorescence

**Image 2.** Sample Type : Rat thyrocytes-FRTL-5 Primary Antibody Dilution : 1:100 Secondary Antibody : Anti-rabbit-Texas Red Secondary Antibody Dilution : 1:100 Color/Signal Descriptions : Red: PARP2 Blue: DAPI Gene Name : P Submitted by : Syed A Morshed, Mount Sinai School of Medicine and James J Peters VA Medical Center

# PARP2



## Western Blotting

**Image 3.** Host: Rabbit Target Name: P Sample Tissue:  
Human Hela Antibody Dilution: 1.0ug/ml