

Datasheet for ABIN2778113 anti-PARP3 antibody (C-Term)



[Go to Product page](#)

3 Images

1 Publication

Overview

Quantity:	100 µL
Target:	PARP3
Binding Specificity:	C-Term
Reactivity:	Human, Mouse, Rat, Rabbit, Horse, Pig, Cow, Dog
Host:	Rabbit
Clonality:	Polyclonal
Conjugate:	This PARP3 antibody is un-conjugated
Application:	Immunohistochemistry (IHC), Western Blotting (WB)

Product Details

Immunogen:	The immunogen is a synthetic peptide directed towards the C terminal region of human PARP3
Sequence:	LGREHHINTD NPSLKSPPPG FDSVIARGHT EPDPTQDTEL ELDGQQVWVP
Predicted Reactivity:	Cow: 92%, Dog: 91%, Horse: 100%, Human: 100%, Mouse: 77%, Pig: 85%, Rabbit: 100%, Rat: 92%
Characteristics:	This is a rabbit polyclonal antibody against PARP3. It was validated on Western Blot and immunohistochemistry.
Purification:	Affinity Purified

Target Details

Target:	PARP3
Alternative Name:	PARP3 (PARP3 Products)

Target Details

Background:	<p>PARP3 belongs to the PARP family. These enzymes modify nuclear proteins by poly-ADP-ribosylation, which is required for DNA repair, regulation of apoptosis, and maintenance of genomic stability. PARP3 is preferentially localized to the daughter centriole throughout the cell cycle. Alternatively spliced transcript variants encoding different isoforms have been identified.</p> <p>Alias Symbols: IRT1, ADPRT3, ADPRTL2, ADPRTL3, PADPRT-3</p> <p>Protein Interaction Partner: UBC, APP, PARP3, HIST1H1A, PARP1, HIST2H3C, MTHFD2, HIST2H2BE, RPA3,</p> <p>Protein Size: 532</p>
Molecular Weight:	59 kDa
Gene ID:	10039
NCBI Accession:	NM_005485 , NP_005476
UniProt:	Q9Y6F1

Application Details

Application Notes:	Optimal working dilutions should be determined experimentally by the investigator.
Comment:	Antigen size: 532 AA
Restrictions:	For Research Use only

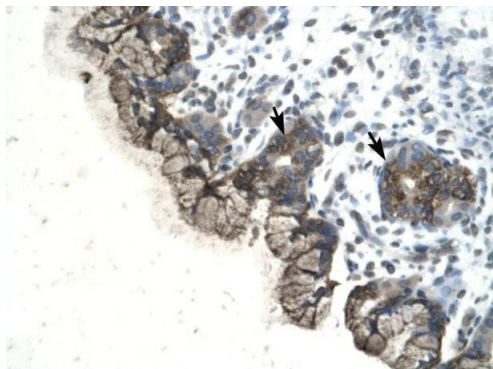
Handling

Format:	Liquid
Concentration:	Lot specific
Buffer:	Liquid. Purified antibody supplied in 1x PBS buffer with 0.09 % (w/v) sodium azide and 2 % sucrose.
Preservative:	Sodium azide
Precaution of Use:	This product contains Sodium azide: a POISONOUS AND HAZARDOUS SUBSTANCE which should be handled by trained staff only.
Handling Advice:	Avoid repeated freeze-thaw cycles.
Storage:	-20 °C
Storage Comment:	For short term use, store at 2-8°C up to 1 week. For long term storage, store at -20°C in small aliquots to prevent freeze-thaw cycles.

Publications

Product cited in: Gerhard, Wagner, Feingold, Shenmen, Grouse, Schuler, Klein, Old, Rasooly, Good, Guyer, Peck, Derge, Lipman, Collins, Jang, Sherry, Feolo, Misquitta, Lee, Rotmistrovsky, Greenhut, Schaefer, Buetow et al.: "The status, quality, and expansion of the NIH full-length cDNA project: the Mammalian Gene Collection (MGC). ..." in: **Genome research**, Vol. 14, Issue 10B, pp. 2121-7, (2004) ([PubMed](#)).

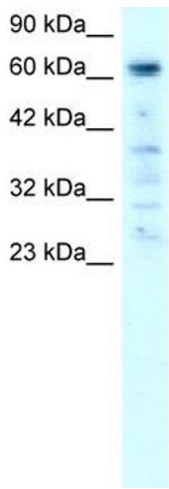
Images



Rabbit Anti-ADPRTL3 Antibody
Catalog Number: ARP33760
Lot Number: QC2903
Paraffin Embedded Tissue: Human Stomach
Cells with Positive label: Epithelial cells of fundic glands(Indicated with Arrows)
Antibody Concentration: 4.0-8.0 µg/ml
Magnification: 400X

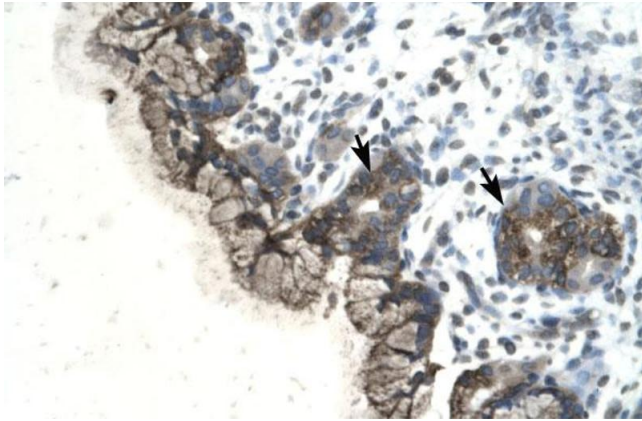
Immunohistochemistry

Image 1. Human Stomach



Western Blotting

Image 2. WB Suggested Anti-PAntibody Titration: 0.2-1 ug/ml Positive Control: HepG2 cell lysate



Immunohistochemistry

Image 3. Human Stomach