



[Go to Product page](#)

Datasheet for ABIN2778117
anti-PARP11 antibody (N-Term)

3 Images

Overview

Quantity:	100 µL
Target:	PARP11
Binding Specificity:	N-Term
Reactivity:	Human, Mouse, Rat, Cow, Dog, Horse, Guinea Pig, Rabbit, Pig
Host:	Rabbit
Clonality:	Polyclonal
Conjugate:	This PARP11 antibody is un-conjugated
Application:	Western Blotting (WB)

Product Details

Immunogen:	The immunogen is a synthetic peptide directed towards the N terminal region of human PARP11
Sequence:	SAFSYICENE AIPMPHWEN VNTQVPYQLI PLHNQTHEYN EVANLFGKTM
Predicted Reactivity:	Cow: 100%, Dog: 100%, Guinea Pig: 93%, Horse: 100%, Human: 100%, Mouse: 91%, Pig: 100%, Rabbit: 93%, Rat: 79%
Characteristics:	This is a rabbit polyclonal antibody against PARP11. It was validated on Western Blot using a cell lysate as a positive control.
Purification:	Affinity Purified

Target Details

Target:	PARP11
---------	--------

Target Details

Alternative Name: PARP11 ([PARP11 Products](#))

Background: The PARP11 gene is part of the poly (ADP-ribose) polymerase family.
Alias Symbols: HH0048, PARP11
Protein Interaction Partner: UBC, LMO4, LMO2, APP, NEDD4L, KIF3A, VHL, RAD21, IFT20, KIFAP3, MAP3K10, RAB4A, MAP3K11, RAB5A,
Protein Size: 331

Molecular Weight: 39 kDa

Gene ID: 57097

NCBI Accession: [NM_020367](#), [NP_065100](#)

UniProt: [Q9NR21](#)

Application Details

Application Notes: Optimal working dilutions should be determined experimentally by the investigator.

Comment: Antigen size: 331 AA

Restrictions: For Research Use only

Handling

Format: Liquid

Concentration: Lot specific

Buffer: Liquid. Purified antibody supplied in 1x PBS buffer with 0.09 % (w/v) sodium azide and 2 % sucrose.

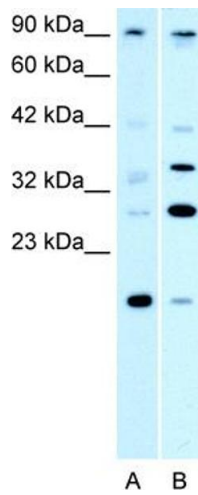
Preservative: Sodium azide

Precaution of Use: This product contains Sodium azide: a POISONOUS AND HAZARDOUS SUBSTANCE which should be handled by trained staff only.

Handling Advice: Avoid repeated freeze-thaw cycles.

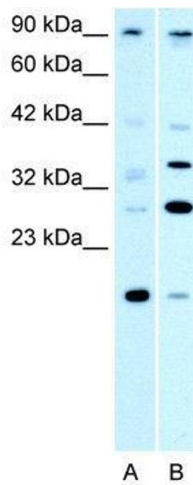
Storage: -20 °C

Storage Comment: For short term use, store at 2-8°C up to 1 week. For long term storage, store at -20°C in small aliquots to prevent freeze-thaw cycles.



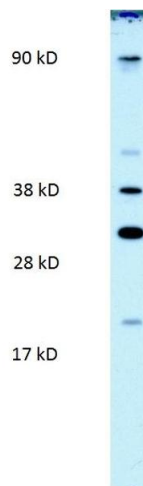
Western Blotting

Image 1. WB Suggested Anti-PAntibody Titration: 0.2-1 ug/ml ELISA Titer: 1:312500 Positive Control: HepG2 cell lysate KIF3B is supported by BioGPS gene expression data to be expressed in HepG2



Western Blotting

Image 2. WB Suggested Anti-PARP11 Antibody Titration: 0.2-1 µg/mL ELISA Titer: 1:12500 Positive Control: HepG2 cell lysate KIF3B is supported by BioGPS gene expression data to be expressed in HepG2



Western Blotting

Image 3. WB Suggested Anti-PAntibody Titration: 0.2-1 ug/ml ELISA Titer: 1:312500 Positive Control: Human lung tissue lysate Pis supported by BioGPS gene expression data to be expressed in HepG2