



[Go to Product page](#)

Datasheet for ABIN2778122  
**anti-PARP14 antibody (C-Term)**

1 Image

### Overview

Quantity:	100 µL
Target:	PARP14
Binding Specificity:	C-Term
Reactivity:	Human, Mouse, Rat, Cow, Dog, Guinea Pig, Horse, Zebrafish (Danio rerio)
Host:	Rabbit
Clonality:	Polyclonal
Conjugate:	This PARP14 antibody is un-conjugated
Application:	Western Blotting (WB)

### Product Details

Immunogen:	The immunogen is a synthetic peptide directed towards the C-terminal region of HUMAN PARP14
Sequence:	THGNHSLIVP PSKNPQNPTD LYDTVTDNVH HPSLFVAFYD YQAYPEYLIT
Predicted Reactivity:	Cow: 100%, Dog: 100%, Guinea Pig: 100%, Horse: 100%, Human: 100%, Mouse: 100%, Rat: 100%, Zebrafish: 79%
Characteristics:	This is a rabbit polyclonal antibody against PARP14. It was validated on Western Blot.
Purification:	Affinity Purified

### Target Details

Target:	PARP14
---------	--------

## Target Details

---

Alternative Name:	PARP14 ( <a href="#">PARP14 Products</a> )
Background:	<p>Poly(ADP-ribosyl)ation is an immediate DNA damage-dependent posttranslational modification of histones and other nuclear proteins that contributes to the survival of injured proliferating cells. PARP14 belongs to the superfamily of enzymes that perform this modification .</p> <p>Protein Interaction Partner: UBC, DTX3L, PARP9, RPA3, RPA2, RPA1, IKBKG, CUL2, HDAC3, HDAC2, FCER2, STAT6, GPI,</p> <p>Protein Size: 797</p>
Molecular Weight:	87 kDa
Gene ID:	54625

## Application Details

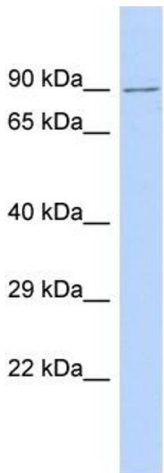
---

Application Notes:	Optimal working dilution should be determined by the investigator.
Restrictions:	For Research Use only

## Handling

---

Format:	Liquid
Concentration:	1 mg/mL
Buffer:	Liquid. Purified antibody supplied in 1x PBS buffer with 0.09 % (w/v) sodium azide and 2 % sucrose.
Preservative:	Sodium azide
Precaution of Use:	This product contains Sodium azide: a POISONOUS AND HAZARDOUS SUBSTANCE which should be handled by trained staff only.
Handling Advice:	Avoid repeat freeze-thaw cycles.
Storage:	-20 °C
Storage Comment:	For short term use, store at 2-8°C up to 1 week. For long term storage, store at -20°C in small aliquots to prevent freeze-thaw cycles.



Host: Rabbit  
Target Name: PARP14  
Sample Tissue: 721\_B Cell Lysate  
Antibody Dilution: 1.0µg/ml

### Western Blotting

**Image 1.** Host: Rabbit Target Name: PARP14 Sample Type: 721\_B Whole Cell lysates Antibody Dilution: 1.0ug/ml