



[Go to Product page](#)

Datasheet for ABIN2778123
anti-PARP6 antibody (N-Term)

4 Images

Overview

| | |
|----------------------|---|
| Quantity: | 100 µL |
| Target: | PARP6 |
| Binding Specificity: | N-Term |
| Reactivity: | Human, Mouse, Rat, Dog, Cow, Guinea Pig, Horse, Rabbit, Zebrafish (Danio rerio) |
| Host: | Rabbit |
| Clonality: | Polyclonal |
| Conjugate: | This PARP6 antibody is un-conjugated |
| Application: | Western Blotting (WB) |

Product Details

| | |
|-----------------------|---|
| Immunogen: | The immunogen is a synthetic peptide directed towards the N terminal region of human PARP6 |
| Sequence: | MDIKGQFWND DDSEGDNESE EFLYGVQGSC AADLYRHPQL DADIEAVKEI |
| Predicted Reactivity: | Cow: 100%, Dog: 100%, Guinea Pig: 100%, Horse: 100%, Human: 100%, Mouse: 100%, Rabbit: 100%, Rat: 100%, Zebrafish: 100% |
| Characteristics: | This is a rabbit polyclonal antibody against PARP6. It was validated on Western Blot. |
| Purification: | Affinity Purified |

Target Details

| | |
|-------------------|--|
| Target: | PARP6 |
| Alternative Name: | PARP6 (PARP6 Products) |

Target Details

| | |
|-------------------|---|
| Background: | <p>Poly(ADP-ribose) polymerases (PARPs) constitute a large family of 18 proteins, encoded by different genes and displaying a conserved catalytic domain. They are involved in DNA-damage-dependent post-translational modification of histones and other nuclear proteins that contributes to the survival of injured proliferating cells.</p> <p>Alias Symbols: MGC131971, pART17</p> <p>Protein Interaction Partner: UBA5, ANKMY2, NSFL1C, RPRD1A, ARIH2, PLIN3, PLAA, SURF2, HK1, CBS,</p> <p>Protein Size: 630</p> |
| Molecular Weight: | 71 kDa |
| Gene ID: | 56965 |
| NCBI Accession: | NM_020214 , NP_064599 |
| UniProt: | Q2NL67 |

Application Details

| | |
|--------------------|--|
| Application Notes: | Optimal working dilutions should be determined experimentally by the investigator. |
| Comment: | Antigen size: 630 AA |
| Restrictions: | For Research Use only |

Handling

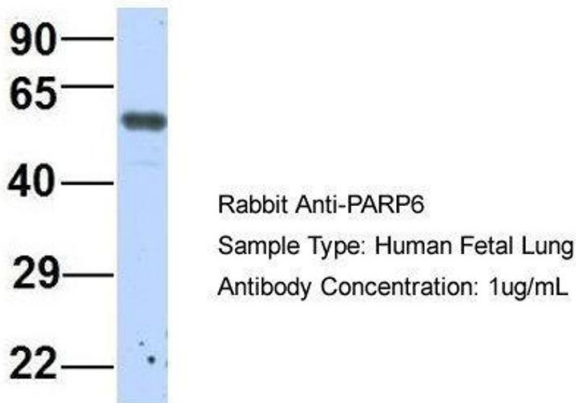
| | |
|--------------------|---|
| Format: | Liquid |
| Concentration: | Lot specific |
| Buffer: | Liquid. Purified antibody supplied in 1x PBS buffer with 0.09 % (w/v) sodium azide and 2 % sucrose. |
| Preservative: | Sodium azide |
| Precaution of Use: | This product contains Sodium azide: a POISONOUS AND HAZARDOUS SUBSTANCE which should be handled by trained staff only. |
| Handling Advice: | Avoid repeated freeze-thaw cycles. |
| Storage: | -20 °C |
| Storage Comment: | For short term use, store at 2-8°C up to 1 week. For long term storage, store at -20°C in small aliquots to prevent freeze-thaw cycles. |



Western Blotting

Image 1. WB Suggested Anti-PAntibody Titration: 0.2-1 ug/ml ELISA Titer: 1:12500 Positive Control: 721_B cell lysate

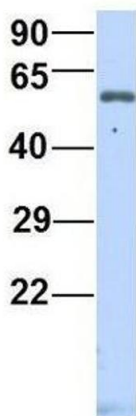
PARP6



Western Blotting

Image 2. Host: Rabbit Target Name: P Sample Type: Human Fetal Lung Antibody Dilution: 1.0ug/ml

PARP6



Western Blotting

Image 3. Host: Rabbit Target Name: P Sample Type: Human Fetal Heart Antibody Dilution: 1.0ug/ml

Please check the [product details page](#) for more images. Overall 4 images are available for ABIN2778123.