

Datasheet for ABIN2778126
anti-ATP7A antibody (Middle Region)



[Go to Product page](#)

3 Images

Overview

Quantity:	100 µL
Target:	ATP7A
Binding Specificity:	Middle Region
Reactivity:	Human, Rat, Mouse, Dog, Cow, Horse, Guinea Pig, Rabbit
Host:	Rabbit
Clonality:	Polyclonal
Conjugate:	This ATP7A antibody is un-conjugated
Application:	Western Blotting (WB)

Product Details

Immunogen:	The immunogen is a synthetic peptide directed towards the middle region of human ATP7A
Sequence:	SSLFLKLYRK PTYESYELPA RSQIGQKSPS EISVHVGIDD TSRNSPKLGL
Specificity:	This antibody is will react to isoforms 1-5.
Predicted Reactivity:	Cow: 100%, Dog: 100%, Guinea Pig: 100%, Horse: 100%, Human: 100%, Mouse: 100%, Rabbit: 100%, Rat: 100%
Characteristics:	This is a rabbit polyclonal antibody against ATP7A. It was validated on Western Blot using a cell lysate as a positive control.
Purification:	Affinity Purified

Target Details

Target:	ATP7A
Alternative Name:	ATP7A (ATP7A Products)
Background:	<p>The ATP7A gene encodes the Menkes copper-translocating P-type ATPase, a ubiquitous protein that regulates the absorption of copper in the gastrointestinal tract. Inside cells, this protein has a dual function: it delivers copper to cuproenzymes in the Gol</p> <p>Alias Symbols: MK, MNK, DSMAX, SMAX3</p> <p>Protein Interaction Partner: ACIN1, UBC, COMMD1, CLU, ATOX1, PDZD11, CP, GLRX,</p> <p>Protein Size: 1500</p>
Molecular Weight:	163 kDa
Gene ID:	538
NCBI Accession:	NM_000052 , NP_000043
UniProt:	Q04656
Pathways:	Transition Metal Ion Homeostasis , Ribonucleoside Biosynthetic Process

Application Details

Application Notes:	Optimal working dilutions should be determined experimentally by the investigator.
Comment:	Antigen size: 1500 AA
Restrictions:	For Research Use only

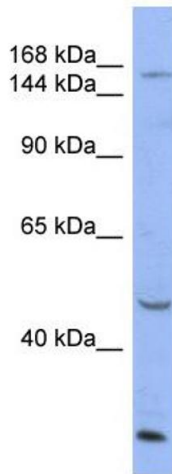
Handling

Format:	Liquid
Concentration:	Lot specific
Buffer:	Liquid. Purified antibody supplied in 1x PBS buffer with 0.09 % (w/v) sodium azide and 2 % sucrose.
Preservative:	Sodium azide
Precaution of Use:	This product contains Sodium azide: a POISONOUS AND HAZARDOUS SUBSTANCE which should be handled by trained staff only.
Handling Advice:	Avoid repeated freeze-thaw cycles.
Storage:	-20 °C

Handling

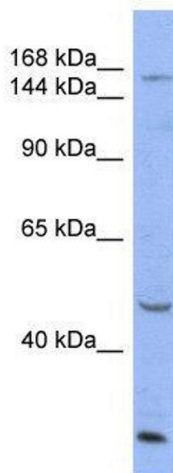
Storage Comment: For short term use, store at 2-8°C up to 1 week. For long term storage, store at -20°C in small aliquots to prevent freeze-thaw cycles.

Images



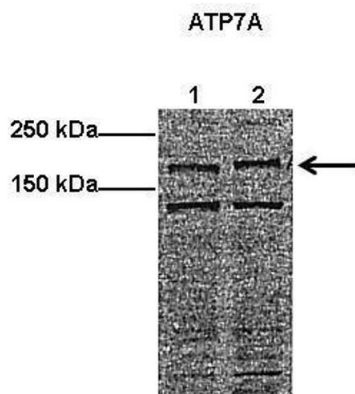
Western Blotting

Image 1. WB Suggested Anti-ATP7A Antibody Titration: 0.2-1 ug/ml ELISA Titer: 1:312500 Positive Control: HT1080 cell lysate ATP7A is supported by BioGPS gene expression data to be expressed in HT1080



Western Blotting

Image 2. WB Suggested Anti-ATP7A Antibody Titration: 0.2-1 µg/mL ELISA Titer: 1:12500 Positive Control: HT1080 cell lysate ATP7A is supported by BioGPS gene expression data to be expressed in HT1080



Western Blotting

Image 3. Lanes: Lane1: 40 ug mouse endothelial fibroblast lysate Lane2: 40 ug human HUVEC lysate Primary Antibody Dilution: 1:500 Secondary Antibody: Anti-rabbit HRP Secondary Antibody Dilution: 1:2000 Gene Name: ATP7A Submitted by: Anonymous

See Immunoblot 2 Data and Customer Feedback for more Information