

Datasheet for ABIN2778127
anti-EPB42 antibody (Middle Region)



[Go to Product page](#)

1 Image

Overview

Quantity:	100 µL
Target:	EPB42
Binding Specificity:	Middle Region
Reactivity:	Human, Rat, Mouse, Guinea Pig, Cow, Dog, Horse, Rabbit, Zebrafish (Danio rerio)
Host:	Rabbit
Clonality:	Polyclonal
Conjugate:	This EPB42 antibody is un-conjugated
Application:	Western Blotting (WB)

Product Details

Immunogen:	The immunogen is a synthetic peptide directed towards the middle region of human EPB42
Sequence:	ISTKGVGSDR CEDITQNYKY PEGSLQEKEV LERVEKEKME REKDNGIRPP
Predicted Reactivity:	Cow: 85%, Dog: 92%, Guinea Pig: 77%, Horse: 92%, Human: 100%, Mouse: 92%, Rabbit: 92%, Rat: 100%, Zebrafish: 75%
Characteristics:	This is a rabbit polyclonal antibody against EPB42. It was validated on Western Blot using a cell lysate as a positive control.
Purification:	Affinity Purified

Target Details

Target:	EPB42
---------	-------

Target Details

Alternative Name:	EPB42 (EPB42 Products)
Background:	<p>Erythrocyte membrane protein band 4.2 is an ATP-binding protein which may regulate the association of protein 3 with ankyrin. It probably has a role in erythrocyte shape and mechanical property regulation. Mutations in the EPB42 gene are associated with recessive spherocytic elliptocytosis and recessively transmitted hereditary hemolytic anemia.</p> <p>Alias Symbols: PA, SPH5</p> <p>Protein Interaction Partner: MAPK14, SPINK7, BLOC1S4, STX12, CD47, SLC4A2, KRAS, ANK1, SPTAN1, EPB41, DMTN, SLC4A1, ANK2,</p> <p>Protein Size: 721</p>
Molecular Weight:	80 kDa
Gene ID:	2038
NCBI Accession:	NM_000119 , NP_000110
Pathways:	Transition Metal Ion Homeostasis

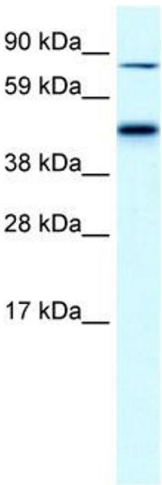
Application Details

Application Notes:	Optimal working dilutions should be determined experimentally by the investigator.
Comment:	Antigen size: 721 AA
Restrictions:	For Research Use only

Handling

Format:	Liquid
Concentration:	Lot specific
Buffer:	Liquid. Purified antibody supplied in 1x PBS buffer with 0.09 % (w/v) sodium azide and 2 % sucrose.
Preservative:	Sodium azide
Precaution of Use:	This product contains Sodium azide: a POISONOUS AND HAZARDOUS SUBSTANCE which should be handled by trained staff only.
Handling Advice:	Avoid repeated freeze-thaw cycles.
Storage:	-20 °C
Storage Comment:	For short term use, store at 2-8°C up to 1 week. For long term storage, store at -20°C in small

aliquots to prevent freeze-thaw cycles.



Western Blotting

Image 1. WB Suggested Anti-EPB42 Antibody Titration: 0.2-1 ug/ml Positive Control: Human Liver