

Datasheet for ABIN2778130
anti-Afamin antibody (Middle Region)[Go to Product page](#)

1 Image

2 Publications

Overview

Quantity:	100 µL
Target:	Afamin (AFM)
Binding Specificity:	Middle Region
Reactivity:	Human, Guinea Pig
Host:	Rabbit
Clonality:	Polyclonal
Conjugate:	This Afamin antibody is un-conjugated
Application:	Western Blotting (WB)

Product Details

Immunogen:	The immunogen is a synthetic peptide directed towards the middle region of human AFM
Sequence:	GQCIINSNKD DRPKDLSLRE GKFTDSENVQ QERDADPDTF FAKFTFEYSR
Predicted Reactivity:	Guinea Pig: 79%, Human: 100%
Characteristics:	This is a rabbit polyclonal antibody against AFM. It was validated on Western Blot using a cell lysate as a positive control.
Purification:	Affinity Purified

Target Details

Target:	Afamin (AFM)
Alternative Name:	AFM (AFM Products)

Target Details

Background:	<p>AFM is a member of the albumin gene family, which is comprised of four genes that localize to chromosome 4 in a tandem arrangement. These four genes encode structurally-related serum transport proteins that are known to be evolutionarily related. AFM is regulated developmentally, expressed in the liver and secreted into the bloodstream. This gene is a member of the albumin gene family, which is comprised of four genes that localize to chromosome 4 in a tandem arrangement. These four genes encode structurally-related serum transport proteins that are known to be evolutionarily related. The protein encoded by this gene is regulated developmentally, expressed in the liver and secreted into the bloodstream.</p> <p>Alias Symbols: ALF, ALB2, ALBA</p> <p>Protein Size: 599</p>
Molecular Weight:	69 kDa
Gene ID:	173
NCBI Accession:	NM_001133 , NP_001124
UniProt:	P43652

Application Details

Application Notes:	Optimal working dilutions should be determined experimentally by the investigator.
Comment:	Antigen size: 599 AA
Restrictions:	For Research Use only

Handling

Format:	Liquid
Concentration:	Lot specific
Buffer:	Liquid. Purified antibody supplied in 1x PBS buffer with 0.09 % (w/v) sodium azide and 2 % sucrose.
Preservative:	Sodium azide
Precaution of Use:	This product contains Sodium azide: a POISONOUS AND HAZARDOUS SUBSTANCE which should be handled by trained staff only.
Handling Advice:	Avoid repeated freeze-thaw cycles.
Storage:	-20 °C

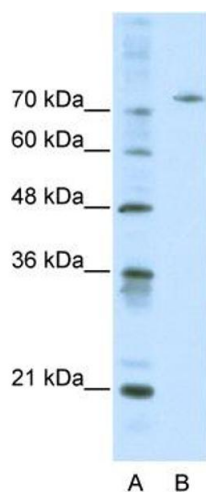
Handling

Storage Comment:	For short term use, store at 2-8°C up to 1 week. For long term storage, store at -20°C in small aliquots to prevent freeze-thaw cycles.
------------------	---

Publications

Product cited in:	Gerhard, Wagner, Feingold, Shenmen, Grouse, Schuler, Klein, Old, Rasooly, Good, Guyer, Peck, Derge, Lipman, Collins, Jang, Sherry, Feolo, Misquitta, Lee, Rotmistrovsky, Greenhut, Schaefer, Buetow et al.: "The status, quality, and expansion of the NIH full-length cDNA project: the Mammalian Gene Collection (MGC). ..." in: Genome research , Vol. 14, Issue 10B, pp. 2121-7, (2004) (PubMed).
-------------------	--

Images



Western Blotting

Image 1. WB Suggested Anti-AFM Antibody Titration: 0.2-1 ug/ml Positive Control: HepG2 cell lysate