

Datasheet for ABIN2778131

anti-Asialoglycoprotein Receptor 1 antibody (Middle Region)[Go to Product page](#)

10 Images

1 Publication

Overview

Quantity:	100 µL
Target:	Asialoglycoprotein Receptor 1 (ASGR1)
Binding Specificity:	Middle Region
Reactivity:	Human, Mouse, Rat, Cow, Pig, Guinea Pig, Horse, Saccharomyces cerevisiae
Host:	Rabbit
Clonality:	Polyclonal
Conjugate:	This Asialoglycoprotein Receptor 1 antibody is un-conjugated
Application:	Western Blotting (WB)

Product Details

Immunogen:	The immunogen is a synthetic peptide directed towards the middle region of Human ASGR1
Sequence:	RKMKSLESQLEKQKQDLSEDHSSLLLVHKQFVSDLRSLSCQMAALQGNGS
Predicted Reactivity:	Cow: 85%, Guinea Pig: 92%, Horse: 86%, Human: 100%, Mouse: 91%, Pig: 93%, Rat: 92%, Yeast: 75%
Characteristics:	This is a rabbit polyclonal antibody against ASGR1. It was validated on Western Blot.
Purification:	Affinity Purified

Target Details

Target:	Asialoglycoprotein Receptor 1 (ASGR1)
Alternative Name:	ASGR1 (ASGR1 Products)

Target Details

Background:	<p>ASGR1 is a cell surface receptor binds to galactose-terminated glycoproteins. It transports these glycoproteins via a series of membrane vesicles and tubules to an acidic-sorting organelle where the receptor and ligand dissociates. Then the receptor is recycled back to the cell surface.</p> <p>Alias Symbols: ASGPR, CLEC4H1, Hs.12056, HL-1, ASGPR1</p> <p>Protein Interaction Partner: CERS2, HIVEP1, SYVN1, VKORC1, FBXO6, EDEM1, HSPA5, CANX, APP, CLEC4G, NLK, RBBP6, HSP90B1, TG, HSP90AA1, DHFR, ASGR2, ITGA1,</p> <p>Protein Size: 291</p>
Molecular Weight:	33 kDa
Gene ID:	432
NCBI Accession:	NM_001671 , NP_001662
UniProt:	P07306
Pathways:	Thyroid Hormone Synthesis

Application Details

Application Notes:	Optimal working dilutions should be determined experimentally by the investigator.
Comment:	Antigen size: 291 AA
Restrictions:	For Research Use only

Handling

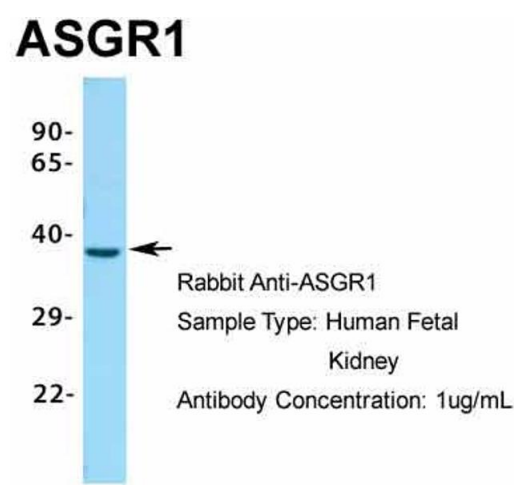
Format:	Liquid
Concentration:	Lot specific
Buffer:	Liquid. Purified antibody supplied in 1x PBS buffer with 0.09 % (w/v) sodium azide and 2 % sucrose.
Preservative:	Sodium azide
Precaution of Use:	This product contains Sodium azide: a POISONOUS AND HAZARDOUS SUBSTANCE which should be handled by trained staff only.
Handling Advice:	Avoid repeated freeze-thaw cycles.
Storage:	-20 °C
Storage Comment:	For short term use, store at 2-8°C up to 1 week. For long term storage, store at -20°C in small

aliquots to prevent freeze-thaw cycles.

Publications

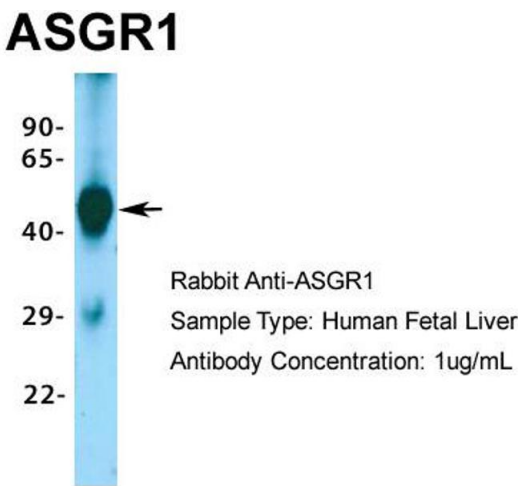
Product cited in: Roberts, Childs, Brown, Davis, Booth: "Early depression of Ankrd2 and Csrp3 mRNAs in the polyribosomal and whole tissue fractions in skeletal muscle with decreased voluntary running." in: **Journal of applied physiology (Bethesda, Md. : 1985)**, Vol. 112, Issue 8, pp. 1291-9, (2012) ([PubMed](#)).

Images



Western Blotting

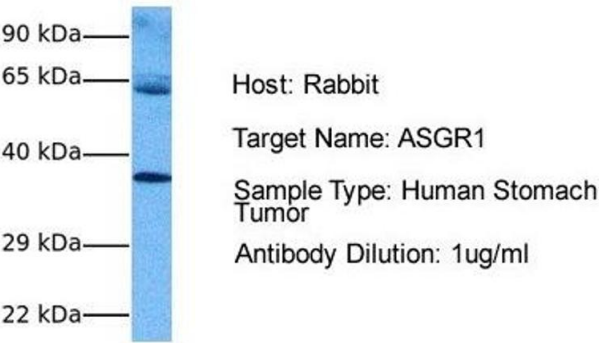
Image 1. Host: Rabbit Target Name: ASGR1 Sample Type: Human Fetal Kidney Antibody Dilution: 1.0ug/ml



Western Blotting

Image 2. Host: Rabbit Target Name: ASGR1 Sample Type: Human Fetal Liver Antibody Dilution: 1.0ug/ml

ASGR1



Western Blotting

Image 3. Host: Rabbit Target Name: ASGR1 Sample Tissue: Human Stomach Tumor Antibody Dilution: 1.0ug/ml

Please check the [product details page](#) for more images. Overall 10 images are available for ABIN2778131.