

[Go to Product page](#)

Datasheet for ABIN2778132

**anti-Asialoglycoprotein Receptor 1 antibody (N-Term)**

10 Images

## Overview

Quantity:	100 µL
Target:	Asialoglycoprotein Receptor 1 (ASGR1)
Binding Specificity:	N-Term
Reactivity:	Human, Mouse, Rat, Cow, Pig, Guinea Pig, Horse, Saccharomyces cerevisiae
Host:	Rabbit
Clonality:	Polyclonal
Conjugate:	This Asialoglycoprotein Receptor 1 antibody is un-conjugated
Application:	Western Blotting (WB)

## Product Details

Immunogen:	The immunogen is a synthetic peptide directed towards the N terminal region of human ASGR1
Sequence:	RKMKSLESQLEKQKDLSEDHSSLLLVKQFVSDLRSLSCQMAALQGNGS
Predicted Reactivity:	Cow: 85%, Guinea Pig: 92%, Horse: 86%, Human: 100%, Mouse: 91%, Pig: 93%, Rat: 92%, Yeast: 75%
Characteristics:	This is a rabbit polyclonal antibody against ASGR1. It was validated on Western Blot using a cell lysate as a positive control.
Purification:	Protein A purified

## Target Details

Target:	Asialoglycoprotein Receptor 1 (ASGR1)
---------	---------------------------------------

## Target Details

---

Alternative Name:	ASGR1 ( <a href="#">ASGR1 Products</a> )
Background:	<p>ASGR1 encodes for a cell surface receptor binds to galactose-terminated glycoproteins. It transports these glycoproteins via a series of membrane vesicles and tubules to an acidic-sorting organelle where the receptor and ligand dissociates. Then the receptor is recycled back to the cell surface.</p> <p>Alias Symbols: HL-1, ASGPR, ASGPR1, CLEC4H1</p> <p>Protein Interaction Partner: CERS2, HIVEP1, SYVN1, VKORC1, FBXO6, EDEM1, HSPA5, CANX, APP, CLEC4G, NLK, RBBP6, HSP90B1, TG, HSP90AA1, DHFR, ASGR2, ITGA1,</p> <p>Protein Size: 291</p>
Molecular Weight:	33 kDa
Gene ID:	432
NCBI Accession:	<a href="#">NM_001671</a> , <a href="#">NP_001662</a>
UniProt:	<a href="#">Q6FGQ5</a>
Pathways:	<a href="#">Thyroid Hormone Synthesis</a>

## Application Details

---

Application Notes:	Optimal working dilutions should be determined experimentally by the investigator.
Comment:	Antigen size: 291 AA
Restrictions:	For Research Use only

## Handling

---

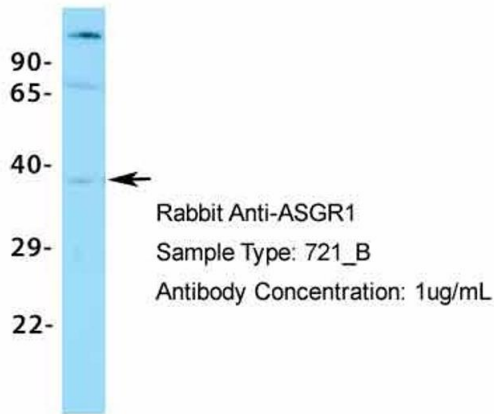
Format:	Liquid
Concentration:	Lot specific
Buffer:	Liquid. Purified antibody supplied in 1x PBS buffer with 0.09 % (w/v) sodium azide and 2 % sucrose.
Preservative:	Sodium azide
Precaution of Use:	This product contains Sodium azide: a POISONOUS AND HAZARDOUS SUBSTANCE which should be handled by trained staff only.
Handling Advice:	Avoid repeated freeze-thaw cycles.
Storage:	-20 °C

## Handling

Storage Comment: For short term use, store at 2-8°C up to 1 week. For long term storage, store at -20°C in small aliquots to prevent freeze-thaw cycles.

## Images

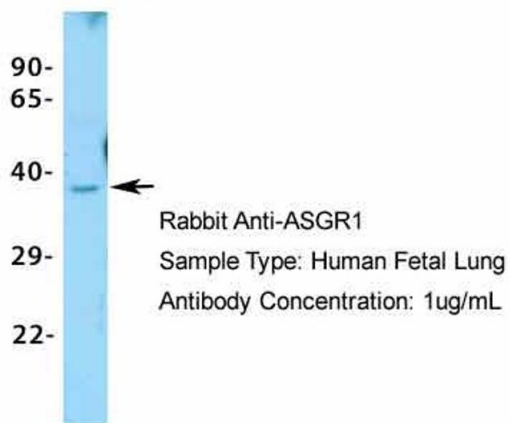
### ASGR1



#### Western Blotting

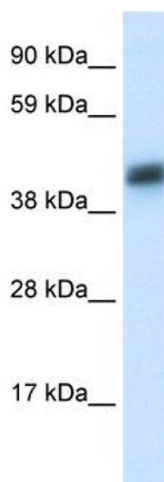
**Image 1.** Host: Rabbit Target Name: ASGR1 Sample Type: 721\_B Antibody Dilution: 1.0ug/ml

### ASGR1



#### Western Blotting

**Image 2.** Host: Rabbit Target Name: ASGR1 Sample Type: Human Fetal Lung Antibody Dilution: 1.0ug/ml



#### Western Blotting

**Image 3.** WB Suggested Antibody Titration: 0.2-1 ug/ml Positive Control: Liver

Please check the [product details page](#) for more images. Overall 10 images are available for ABIN2778132.