

Datasheet for ABIN2778133
anti-SLC17A2 antibody (Middle Region)[Go to Product page](#)

2 Images

Overview

Quantity:	100 µL
Target:	SLC17A2
Binding Specificity:	Middle Region
Reactivity:	Human, Mouse, Rat, Cow, Guinea Pig, Horse
Host:	Rabbit
Clonality:	Polyclonal
Conjugate:	This SLC17A2 antibody is un-conjugated
Application:	Western Blotting (WB), Immunohistochemistry (IHC)

Product Details

Immunogen:	The immunogen is a synthetic peptide directed towards the middle region of human SLC17A2
Sequence:	VIYDDPMHHP CISVREKEHI LSSLAQQPSS PGRAVPIKAM VTCLPLWAIF
Predicted Reactivity:	Cow: 85%, Guinea Pig: 91%, Horse: 77%, Human: 100%, Mouse: 85%, Rat: 92%
Characteristics:	This is a rabbit polyclonal antibody against SLC17A2. It was validated on Western Blot and immunohistochemistry.
Purification:	Affinity Purified

Target Details

Target:	SLC17A2
Alternative Name:	SLC17A2 (SLC17A2 Products)

Target Details

Background:	SLC17A2 is a member of the solute carrier family. Alias Symbols: NPT3 Protein Interaction Partner: UBC, Protein Size: 436
Molecular Weight:	48 kDa
Gene ID:	10246
NCBI Accession:	NM_005835 , NP_005826
UniProt:	O00624

Application Details

Application Notes:	Optimal working dilutions should be determined experimentally by the investigator.
Comment:	Antigen size: 436 AA
Restrictions:	For Research Use only

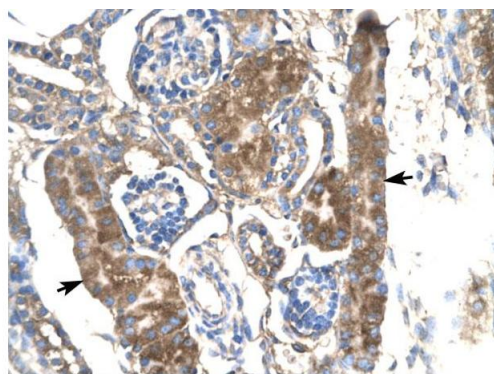
Handling

Format:	Liquid
Concentration:	Lot specific
Buffer:	Liquid. Purified antibody supplied in 1x PBS buffer with 0.09 % (w/v) sodium azide and 2 % sucrose.
Preservative:	Sodium azide
Precaution of Use:	This product contains Sodium azide: a POISONOUS AND HAZARDOUS SUBSTANCE which should be handled by trained staff only.
Handling Advice:	Avoid repeated freeze-thaw cycles.
Storage:	-20 °C
Storage Comment:	For short term use, store at 2-8°C up to 1 week. For long term storage, store at -20°C in small aliquots to prevent freeze-thaw cycles.



Western Blotting

Image 1. WB Suggested Anti-SLC17A2 Antibody Titration:
0.2-1 ug/ml Positive Control: Jurkat cell lysate



Immunohistochemistry

Image 2. Human kidney

Rabbit Anti-SLC17A2 Antibody
Catalog Number: ARP33806
Lot Number: QC2927
Paraffin Embedded Tissue: Human Kidney
Cells with Positive label: Epithelial cells of renal tubules (Indicated with Arrows)
Antibody Concentration: 4.0-8.0 µg/ml
Magnification: 400X