



[Go to Product page](#)

Datasheet for ABIN2778139

## anti-C4BPB antibody (N-Term)

3 Images

1 Publication

### Overview

Quantity:	100 µL
Target:	C4BPB
Binding Specificity:	N-Term
Reactivity:	Human, Dog, Pig
Host:	Rabbit
Clonality:	Polyclonal
Conjugate:	This C4BPB antibody is un-conjugated
Application:	Western Blotting (WB), Immunohistochemistry (IHC)

### Product Details

Immunogen:	The immunogen is a synthetic peptide directed towards the N terminal region of human C4BPB
Sequence:	CCLMVAWRVS ASDAEHCPEL PPVDNSIFVA KEVEGQILGT YVCIKGYHLV
Predicted Reactivity:	Dog: 86%, Human: 100%, Pig: 93%
Characteristics:	This is a rabbit polyclonal antibody against C4BPB. It was validated on Western Blot and immunohistochemistry.
Purification:	Affinity Purified

### Target Details

Target:	C4BPB
Alternative Name:	C4BPB ( <a href="#">C4BPB Products</a> )

## Target Details

---

**Background:** C4BPB is a member of a superfamily of proteins composed predominantly of tandemly arrayed short consensus repeats of approximately 60 amino acids. A single, unique beta-chain encoded by this gene assembles with seven identical alpha-chains into the predominant isoform of C4b-binding protein, a multimeric protein that controls activation of the complement cascade through the classical pathway. C4b-binding protein has a regulatory role in the coagulation system also, mediated through the beta-chain binding of protein S, a vitamin K-dependent protein that serves as a cofactor of activated protein C.

Alias Symbols: C4BP

Protein Interaction Partner: UBC, PROS1,

Protein Size: 252

---

**Molecular Weight:** 28 kDa

---

**Gene ID:** 725

---

**NCBI Accession:** [NM\\_000716](#), [NP\\_000707](#)

---

**UniProt:** [P20851](#)

---

**Pathways:** [Complement System](#)

## Application Details

---

**Application Notes:** Optimal working dilutions should be determined experimentally by the investigator.

---

**Comment:** Antigen size: 252 AA

---

**Restrictions:** For Research Use only

## Handling

---

**Format:** Liquid

---

**Concentration:** Lot specific

---

**Buffer:** Liquid. Purified antibody supplied in 1x PBS buffer with 0.09 % (w/v) sodium azide and 2 % sucrose.

---

**Preservative:** Sodium azide

---

**Precaution of Use:** This product contains Sodium azide: a POISONOUS AND HAZARDOUS SUBSTANCE which should be handled by trained staff only.

---

**Handling Advice:** Avoid repeated freeze-thaw cycles.

---

## Handling

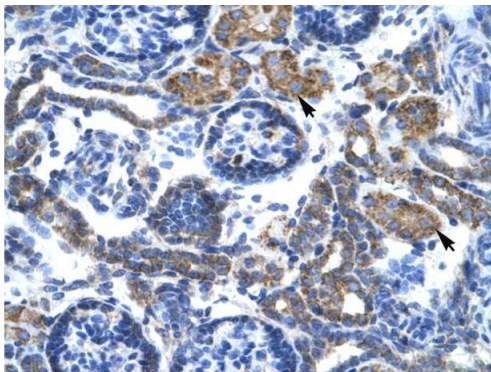
Storage: -20 °C

Storage Comment: For short term use, store at 2-8°C up to 1 week. For long term storage, store at -20°C in small aliquots to prevent freeze-thaw cycles.

## Publications

Product cited in: van Dijk, Schilders, Pruijn: "Human cell growth requires a functional cytoplasmic exosome, which is involved in various mRNA decay pathways." in: **RNA (New York, N.Y.)**, Vol. 13, Issue 7, pp. 1027-35, (2007) ([PubMed](#)).

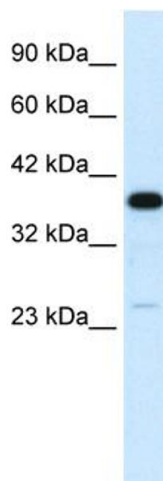
## Images



Rabbit Anti-C4BPB Antibody  
Catalog Number: ARP33814  
Lot Number: QC2934  
Paraffin Embedded Tissue: Human Kidney  
Cells with Positive label: Epithelial cells of renal tubule (Indicated with Arrows)  
Antibody Concentration: 4.0-8.0 µg/ml  
Magnification: 400X

### Immunohistochemistry

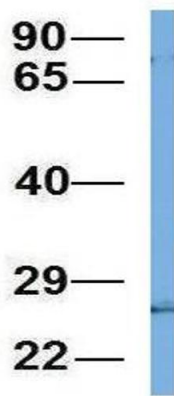
**Image 1.** Human kidney



### Western Blotting

**Image 2.** WB Suggested Anti-C4BPB Antibody Titration: 0.2-1 µg/ml Positive Control: Human Liver

## C4BPB



### Western Blotting

**Image 3.** Host: Rabbit Target Name: C4BPB Sample Type: 721\_B Antibody Dilution: 1.0ug/ml C4BPB is supported by BioGPS gene expression data to be expressed in 721\_B