

Datasheet for ABIN2778141

**anti-Asialoglycoprotein Receptor 2 antibody (N-Term)****3** Images**1** Publication[Go to Product page](#)

## Overview

Quantity:	100 µL
Target:	Asialoglycoprotein Receptor 2 (ASGR2)
Binding Specificity:	N-Term
Reactivity:	Human, Rat, Pig, Saccharomyces cerevisiae
Host:	Rabbit
Clonality:	Polyclonal
Conjugate:	This Asialoglycoprotein Receptor 2 antibody is un-conjugated
Application:	Western Blotting (WB), Immunohistochemistry (IHC)

## Product Details

Immunogen:	The immunogen is a synthetic peptide directed towards the N terminal region of human ASGR2
Sequence:	LVVICVTGSQ SEGHRGAQLQ AELRSLKEAF SNFSSSTLTE VQAISTHGGS
Predicted Reactivity:	Human: 100%, Pig: 77%, Rat: 79%, Yeast: 77%
Characteristics:	This is a rabbit polyclonal antibody against ASGR2. It was validated on Western Blot and immunohistochemistry.
Purification:	Affinity Purified

## Target Details

Target:	Asialoglycoprotein Receptor 2 (ASGR2)
Alternative Name:	ASGR2 ( <a href="#">ASGR2 Products</a> )

## Target Details

Background:	<p>This gene encodes a subunit of the asialoglycoprotein receptor. This receptor is a transmembrane protein that plays a critical role in serum glycoprotein homeostasis by mediating the endocytosis and lysosomal degradation of glycoproteins with exposed terminal galactose or N-acetylgalactosamine residues. The asialoglycoprotein receptor may facilitate hepatic infection by multiple viruses including hepatitis B, and is also a target for liver-specific drug delivery. The asialoglycoprotein receptor is a hetero-oligomeric protein composed of major and minor subunits, which are encoded by different genes. The protein encoded by this gene is the less abundant minor subunit. Alternatively spliced transcript variants encoding multiple isoforms have been observed for this gene.</p> <p>Alias Symbols: HL-2, HBXBP, ASGPR2, ASGP-R2, CLEC4H2</p> <p>Protein Interaction Partner: HDAC3, UBC, CDK6, CDK4, COPS5, TADA3, CDKN2A,</p> <p>Protein Size: 311</p>
Molecular Weight:	35 kDa
Gene ID:	433
NCBI Accession:	<a href="#">NM_001181</a> , <a href="#">NP_001172</a>
UniProt:	<a href="#">P07307</a>
Pathways:	<a href="#">Thyroid Hormone Synthesis</a>

## Application Details

Application Notes:	Optimal working dilutions should be determined experimentally by the investigator.
Comment:	Antigen size: 311 AA
Restrictions:	For Research Use only

## Handling

Format:	Liquid
Concentration:	Lot specific
Buffer:	Liquid. Purified antibody supplied in 1x PBS buffer with 0.09 % (w/v) sodium azide and 2 % sucrose.
Preservative:	Sodium azide
Precaution of Use:	This product contains Sodium azide: a POISONOUS AND HAZARDOUS SUBSTANCE which should be handled by trained staff only.

## Handling

Handling Advice: Avoid repeated freeze-thaw cycles.

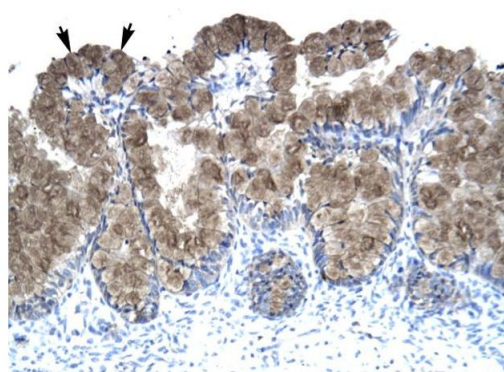
Storage: -20 °C

Storage Comment: For short term use, store at 2-8°C up to 1 week. For long term storage, store at -20°C in small aliquots to prevent freeze-thaw cycles.

## Publications

Product cited in: Mells, Fu, Sharma, Olson, Cheng, Handy, Saxena, Sorescu, Anania: "Glp-1 analog, liraglutide, ameliorates hepatic steatosis and cardiac hypertrophy in C57BL/6J mice fed a Western diet." in: **American journal of physiology. Gastrointestinal and liver physiology**, Vol. 302, Issue 2, pp. G225-35, (2012) ([PubMed](#)).

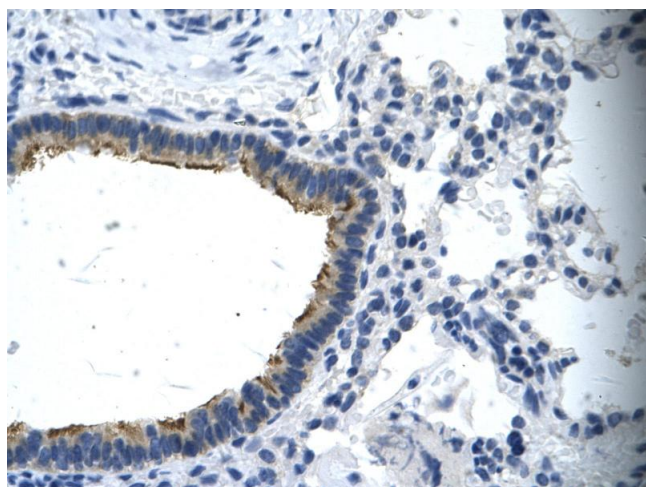
## Images



Rabbit Anti-ASGR2 Antibody  
Catalog Number: ARP33820  
Lot Number: QC2937  
Paraffin Embedded Tissue: Human Intestine  
Cells with Positive label: Epithelial cells of intestinal villus (Indicated with Arrows)  
Antibody Concentration: 4.0-8.0 µg/ml  
Magnification: 400X

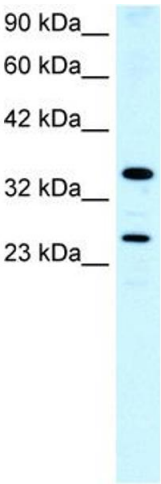
### Immunohistochemistry

**Image 1.** Human Intestine



### Immunohistochemistry

**Image 2.** Rabbit Anti-ANKRD12 Antibody Paraffin Embedded Tissue: Human cilia Cellular Data: Epithelial cells of renal tubule Antibody Concentration: 4.0-8.0 ug/ml Magnification: 400X



Western Blotting

**Image 3.** WB Suggested Anti-ASGR2 Antibody Titration: 0.2-1 ug/ml Positive Control: Human Lung