



Datasheet for ABIN2778148
anti-SLC1A2 antibody (N-Term)



[Go to Product page](#)

7 Images

1 Publication

Overview

Quantity:	100 µL
Target:	SLC1A2
Binding Specificity:	N-Term
Reactivity:	Human, Rat, Mouse, Rabbit, Cow, Dog, Guinea Pig, Horse, Zebrafish (Danio rerio), Sheep
Host:	Rabbit
Clonality:	Polyclonal
Conjugate:	This SLC1A2 antibody is un-conjugated
Application:	Western Blotting (WB), Immunohistochemistry (IHC)

Product Details

Immunogen:	The immunogen is a synthetic peptide directed towards the N terminal region of human SLC1A2
Sequence:	PGNPKLKKQL GPGKKNDEVS SLDAFLDLIR NLFPENLVQA CFQQIQTGTK
Predicted Reactivity:	Cow: 100%, Dog: 100%, Guinea Pig: 100%, Horse: 100%, Human: 100%, Mouse: 100%, Rabbit: 100%, Rat: 100%, Sheep: 100%, Zebrafish: 92%
Characteristics:	This is a rabbit polyclonal antibody against SLC1A2. It was validated on Western Blot using a cell lysate as a positive control.
Purification:	Affinity Purified

Target Details

Target:	SLC1A2
---------	--------

Target Details

Alternative Name: [SLC1A2 \(SLC1A2 Products\)](#)

Background: SLC1A2 is a member of a family of solute transporter proteins. The membrane-bound protein is the principal transporter that clears the excitatory neurotransmitter glutamate from the extracellular space at synapses in the central nervous system. Glutamate clearance is necessary for proper synaptic activation and to prevent neuronal damage from excessive activation of glutamate receptors. Mutations in and decreased expression of this protein are associated with amyotrophic lateral sclerosis. Alternatively spliced transcript variants of this gene have been described, but their full-length nature is not known. This gene encodes a member of a family of solute transporter proteins. The membrane-bound protein is the principal transporter that clears the excitatory neurotransmitter glutamate from the extracellular space at synapses in the central nervous system. Glutamate clearance is necessary for proper synaptic activation and to prevent neuronal damage from excessive activation of glutamate receptors. Mutations in and decreased expression of this protein are associated with amyotrophic lateral sclerosis. Alternatively spliced transcript variants of this gene have been described, but their full-length nature is not known. Publication Note: This RefSeq record includes a subset of the publications that are available for this gene. Please see the Entrez Gene record to access additional publications.

Alias Symbols: EAAT2, GLT-1

Protein Interaction Partner: PML, GRB2, AJUBA, SLC1A2, MYCN, RELA,

Protein Size: 574

Molecular Weight: 62 kDa

Gene ID: 6506

NCBI Accession: [NM_004171](#), [NP_004162](#)

UniProt: [P43004](#)

Pathways: [Dicarboxylic Acid Transport](#)

Application Details

Application Notes: Optimal working dilutions should be determined experimentally by the investigator.

Comment: Antigen size: 574 AA

Restrictions: For Research Use only

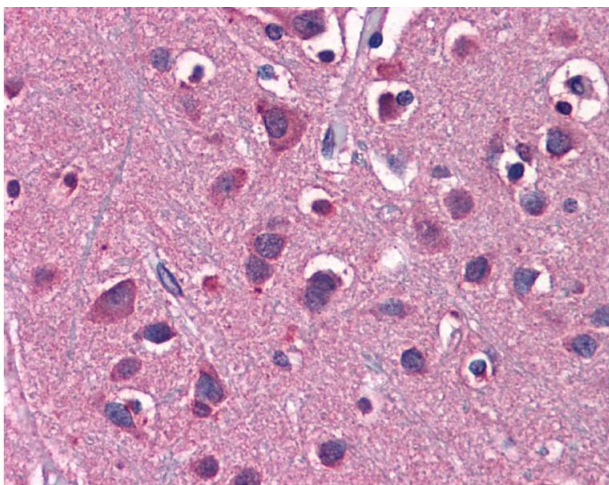
Handling

Format:	Liquid
Concentration:	Lot specific
Buffer:	Liquid. Purified antibody supplied in 1x PBS buffer with 0.09 % (w/v) sodium azide and 2 % sucrose.
Preservative:	Sodium azide
Precaution of Use:	This product contains Sodium azide: a POISONOUS AND HAZARDOUS SUBSTANCE which should be handled by trained staff only.
Handling Advice:	Avoid repeated freeze-thaw cycles.
Storage:	-20 °C
Storage Comment:	For short term use, store at 2-8°C up to 1 week. For long term storage, store at -20°C in small aliquots to prevent freeze-thaw cycles.

Publications

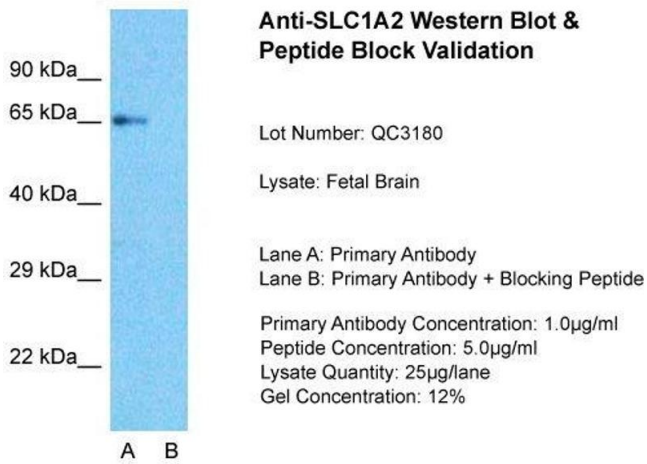
Product cited in:	Roberts, Childs, Brown, Davis, Booth: "Early depression of Ankrd2 and Csrp3 mRNAs in the polyribosomal and whole tissue fractions in skeletal muscle with decreased voluntary running." in: Journal of applied physiology (Bethesda, Md. : 1985) , Vol. 112, Issue 8, pp. 1291-9, (2012) (PubMed).
-------------------	---

Images



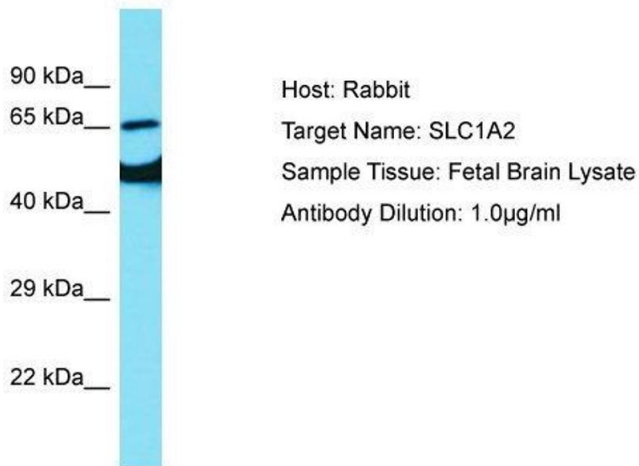
Immunohistochemistry

Image 1.



Western Blotting

Image 2. Host: Rabbit Target Name: SLC1A2 Sample Type: Fetal Brain Lane A: Primary Antibody Lane B: Primary Antibody + Blocking Peptide Primary Antibody Concentration: 1ug/ml Peptide Concentration: 5ug/ml Lysate Quantity: 25ug/lane/Lane Gel Concentration: 0.12



Western Blotting

Image 3. Host: Rabbit Target Name: SLC1A2 Sample Type: Fetal Brain lysates Antibody Dilution: 1.0ug/ml

Please check the [product details page](#) for more images. Overall 7 images are available for ABIN2778148.