

Datasheet for ABIN2778151  
**anti-PLP1 antibody (N-Term)**[Go to Product page](#)

## 3 Images

## Overview

Quantity:	100 µL
Target:	PLP1
Binding Specificity:	N-Term
Reactivity:	Human, Rat, Mouse, Cow, Dog, Horse, Rabbit, Guinea Pig, Zebrafish (Danio rerio)
Host:	Rabbit
Clonality:	Polyclonal
Conjugate:	This PLP1 antibody is un-conjugated
Application:	Western Blotting (WB), Immunohistochemistry (IHC)

## Product Details

Immunogen:	The immunogen is a synthetic peptide directed towards the N terminal region of human PLP1
Sequence:	GHEALTGTEK LIETYFSKNY QDYEYLINVI HAFQYVIYGT ASFFFLYGAL
Predicted Reactivity:	Cow: 100%, Dog: 100%, Guinea Pig: 100%, Horse: 100%, Human: 100%, Mouse: 100%, Rabbit: 100%, Rat: 100%, Zebrafish: 75%
Characteristics:	This is a rabbit polyclonal antibody against PLP1. It was validated on Western Blot using a cell lysate as a positive control.
Purification:	Affinity Purified

## Target Details

Target:	PLP1
---------	------

## Target Details

Alternative Name:	PLP1 ( <a href="#">PLP1 Products</a> )
Background:	<p>PLP1 is a transmembrane proteolipid protein that is the predominant myelin protein present in the central nervous system. It may play a role in the compaction, stabilization, and maintenance of myelin sheaths, as well as in oligodendrocyte development and axonal survival. Mutations in this gene cause X-linked Pelizaeus-Merzbacher disease and spastic paraplegia type 2.</p> <p>Alternatively spliced transcript variants encoding distinct isoforms or having different 5' UTRs, have been identified for this gene. This gene encodes a transmembrane proteolipid protein that is the predominant myelin protein present in the central nervous system. It may play a role in the compaction, stabilization, and maintenance of myelin sheaths, as well as in oligodendrocyte development and axonal survival. Mutations in this gene cause X-linked Pelizaeus-Merzbacher disease and spastic paraplegia type 2. Alternatively spliced transcript variants encoding distinct isoforms or having different 5' UTRs, have been identified for this gene.</p> <p>Alias Symbols: MMPL, PLP, PLP/DM20, PMD, SPG2, HLD1</p> <p>Protein Interaction Partner: PTPRN, CLN8, Htt, ITGAV, ITGA5, MAG, MBP, CANX, CALR,</p> <p>Protein Size: 277</p>
Molecular Weight:	30 kDa
Gene ID:	5354
NCBI Accession:	<a href="#">NM_000533</a> , <a href="#">NP_000524</a>
UniProt:	<a href="#">P60201</a>

## Application Details

Application Notes:	Optimal working dilutions should be determined experimentally by the investigator.
Comment:	Antigen size: 277 AA
Restrictions:	For Research Use only

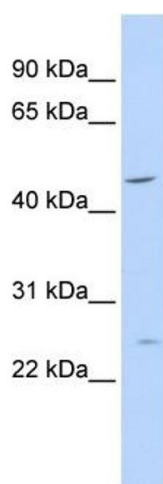
## Handling

Format:	Liquid
Concentration:	Lot specific
Buffer:	Liquid. Purified antibody supplied in 1x PBS buffer with 0.09 % (w/v) sodium azide and 2 % sucrose.
Preservative:	Sodium azide

## Handling

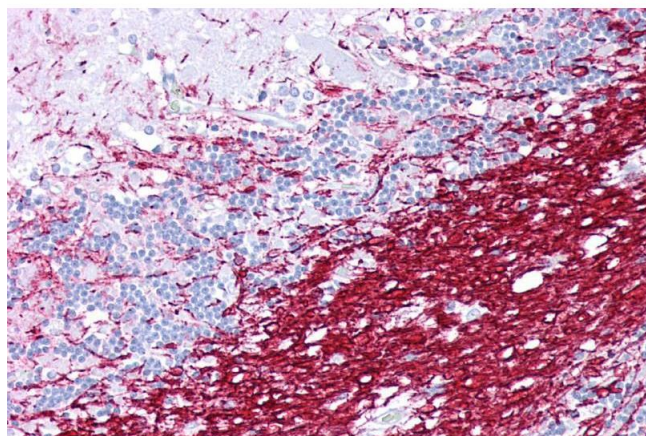
Precaution of Use:	This product contains Sodium azide: a POISONOUS AND HAZARDOUS SUBSTANCE which should be handled by trained staff only.
Handling Advice:	Avoid repeated freeze-thaw cycles.
Storage:	-20 °C
Storage Comment:	For short term use, store at 2-8°C up to 1 week. For long term storage, store at -20°C in small aliquots to prevent freeze-thaw cycles.

## Images



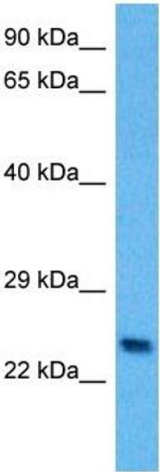
### Western Blotting

**Image 1.** WB Suggested Anti-PLP1 Antibody Titration: 0.2-1 ug/ml ELISA Titer: 1:62500 Positive Control: 721\_B cell lysate



### Immunohistochemistry

**Image 2.** Immunohistochemistry with Brain, cerebellum tissue at an antibody concentration of 5µg/ml using anti-PLP1 antibody (ARP33843\_P050)



Western Blotting

**Image 3.** Host: Mouse Target Name: PLP1 Sample Tissue:  
Mouse Spleen Antibody Dilution: 1ug/ml