

Datasheet for ABIN2778160

**anti-Cholesterol Esterase antibody (C-Term)**[Go to Product page](#)**1** Image**1** Publication

## Overview

|                      |   |
|----------------------|---|
| Quantity:            | 100 µL  |
| Target:              | Cholesterol Esterase (CEL)                          |
| Binding Specificity: | C-Term  |
| Reactivity:          | Human, Mouse, Rat, Horse, Pig                       |
| Host:                | Rabbit  |
| Clonality:           | Polyclonal  |
| Conjugate:           | This Cholesterol Esterase antibody is un-conjugated |
| Application:         | Western Blotting (WB)                               |

## Product Details

|                       |   |
|-----------------------|---|
| Immunogen:            | The immunogen is a synthetic peptide directed towards the C - terminal region of human CEL                                    |
| Sequence:             | VTPTGDSETA PVPPTGDGSA PPVPPTGDSE AAPVPPTDDS KEAQMPAVIR  |
| Predicted Reactivity: | Horse: 77%, Human: 100%, Mouse: 77%, Pig: 85%, Rat: 100%  |
| Characteristics:      | This is a rabbit polyclonal antibody against CEL. It was validated on Western Blot using a cell lysate as a positive control. |
| Purification:         | Affinity Purified   |

## Target Details

|                   |                                      |
|-------------------|--------------------------------------|
| Target:           | Cholesterol Esterase (CEL)           |
| Alternative Name: | CEL ( <a href="#">CEL Products</a> ) |

## Target Details

|             |  |
|-------------|--|
| Background: | <p>CEL catalyzes fat and vitamin absorption. CEL acts in concert with pancreatic lipase and colipase for the complete digestion of dietary triglycerides. The protein encoded by this gene is a glycoprotein secreted from the pancreas into the digestive tract and from the lactating mammary gland into human milk. The physiological role of this protein is in cholesterol and lipid-soluble vitamin ester hydrolysis and absorption. This encoded protein promotes large chylomicron production in the intestine. Also its presence in plasma suggests its interactions with cholesterol and oxidized lipoproteins to modulate the progression of atherosclerosis. In pancreatic tumoral cells, this encoded protein is thought to be sequestered within the Golgi compartment and is probably not secreted. This gene contains a variable number of tandem repeat (VNTR) polymorphism in the coding region that may influence the function of the encoded protein. Publication Note: This RefSeq record includes a subset of the publications that are available for this gene. Please see the Entrez Gene record to access additional publications.</p> <p>Alias Symbols: BAL, BSDL, BSSL, CELL, CEase, FAP, FAPP, LIPA, MODY8</p> <p>Protein Interaction Partner: OLR1, BPGM, LTF,</p> <p>Protein Size: 756</p> |
|-------------|--|

|                   |        |
|-------------------|--------|
| Molecular Weight: | 80 kDa |
|-------------------|--------|

|          |      |
|----------|------|
| Gene ID: | 1056 |
|----------|------|

|                 |   |
|-----------------|---|
| NCBI Accession: | <a href="#">NM_001807</a> , <a href="#">NP_001798</a> |
|-----------------|---|

|          |                        |
|----------|------------------------|
| UniProt: | <a href="#">P19835</a> |
|----------|------------------------|

|           |                                  |
|-----------|----------------------------------|
| Pathways: | <a href="#">Lipid Metabolism</a> |
|-----------|----------------------------------|

## Application Details

|                    |  |
|--------------------|--|
| Application Notes: | Optimal working dilutions should be determined experimentally by the investigator. |
|--------------------|--|

|          |                      |
|----------|----------------------|
| Comment: | Antigen size: 756 AA |
|----------|----------------------|

|               |                       |
|---------------|-----------------------|
| Restrictions: | For Research Use only |
|---------------|-----------------------|

## Handling

|         |        |
|---------|--------|
| Format: | Liquid |
|---------|--------|

|                |              |
|----------------|--------------|
| Concentration: | Lot specific |
|----------------|--------------|

|         |   |
|---------|---|
| Buffer: | Liquid. Purified antibody supplied in 1x PBS buffer with 0.09 % (w/v) sodium azide and 2 % sucrose. |
|---------|---|

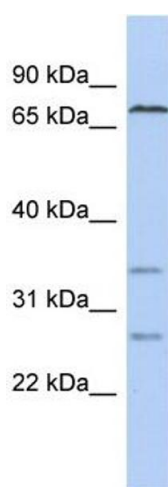
## Handling

|                    |   |
|--------------------|---|
| Preservative:      | Sodium azide  |
| Precaution of Use: | This product contains Sodium azide: a POISONOUS AND HAZARDOUS SUBSTANCE which should be handled by trained staff only.                  |
| Handling Advice:   | Avoid repeated freeze-thaw cycles.  |
| Storage:           | -20 °C  |
| Storage Comment:   | For short term use, store at 2-8°C up to 1 week. For long term storage, store at -20°C in small aliquots to prevent freeze-thaw cycles. |

## Publications

|                   |   |
|-------------------|---|
| Product cited in: | Lazrek, Goffard, Schanen, Karquel, Bocket, Lion, Devaux, Hedouin, Gosset, Hober: "Detection of hepatitis C virus antibodies and RNA among medicolegal autopsy cases in Northern France." in: <b>Diagnostic microbiology and infectious disease</b> , Vol. 55, Issue 1, pp. 55-8, (2006) ( <a href="#">PubMed</a> ). |
|-------------------|---|

## Images



### Western Blotting

**Image 1.** WB Suggested Anti-CEL Antibody Titration: 0.2-1 ug/ml ELISA Titer: 1:312500 Positive Control: SH-SY5Y cell lysate