

Datasheet for ABIN2778163

anti-Chymotrypsin antibody (N-Term)

4 Images

[Go to Product page](#)

Overview

Quantity:	100 µL
Target:	Chymotrypsin (CTRL)
Binding Specificity:	N-Term
Reactivity:	Human, Mouse, Rat, Dog, Pig
Host:	Rabbit
Clonality:	Polyclonal
Conjugate:	This Chymotrypsin antibody is un-conjugated
Application:	Western Blotting (WB)

Product Details

Immunogen:	The immunogen is a synthetic peptide directed towards the N terminal region of human CTRL
Sequence:	LLLSLTLSLV LLGSSWGCGI PAIKPALSFS QRIVNGENAV LGSWPWQVSL
Predicted Reactivity:	Dog: 100%, Human: 100%, Mouse: 85%, Pig: 92%, Rat: 100%
Characteristics:	This is a rabbit polyclonal antibody against CTRL. It was validated on Western Blot using a cell lysate as a positive control.
Purification:	Affinity Purified

Target Details

Target:	Chymotrypsin (CTRL)
Alternative Name:	CTRL (CTRL Products)

Target Details

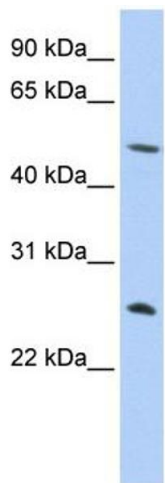
Target Type:	Chemical
Background:	<p>CTRL contains 1 F-box domain. It is substrate-recognition component of the SCF (SKP1-CUL1-F-box protein)-type E3 ubiquitin ligase complex. The protein directly interacts with SKP1A and CUL1. A chromosomal aberration involving FBXO25 is a cause of X-linked mental retardation (XLMR).</p> <p>Alias Symbols: CTRL1, MGC70821</p> <p>Protein Interaction Partner: SERPINA3,</p> <p>Protein Size: 264</p>
Molecular Weight:	25 kDa
Gene ID:	1506
NCBI Accession:	NM_001907 , NP_001898
UniProt:	P40313

Application Details

Application Notes:	Optimal working dilutions should be determined experimentally by the investigator.
Comment:	Antigen size: 264 AA
Restrictions:	For Research Use only

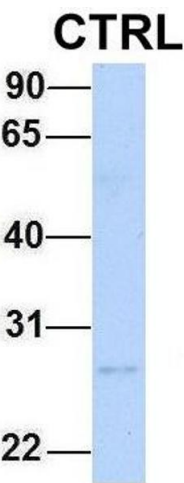
Handling

Format:	Liquid
Concentration:	Lot specific
Buffer:	Liquid. Purified antibody supplied in 1x PBS buffer with 0.09 % (w/v) sodium azide and 2 % sucrose.
Preservative:	Sodium azide
Precaution of Use:	This product contains Sodium azide: a POISONOUS AND HAZARDOUS SUBSTANCE which should be handled by trained staff only.
Handling Advice:	Avoid repeated freeze-thaw cycles.
Storage:	-20 °C
Storage Comment:	For short term use, store at 2-8°C up to 1 week. For long term storage, store at -20°C in small aliquots to prevent freeze-thaw cycles.



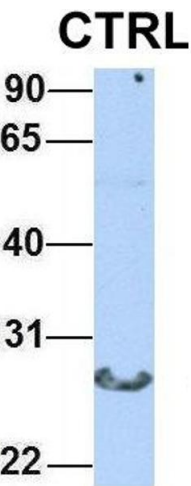
Western Blotting

Image 1. WB Suggested Anti-CTRL Antibody Titration: 0.2-1 ug/ml ELISA Titer: 1:12500 Positive Control: HepG2 cell lysate



Western Blotting

Image 2. Host: Rabbit Target Name: CTRL Sample Type: Human Fetal Liver Antibody Dilution: 1.0ug/ml



Western Blotting

Image 3. Host: Rabbit Target Name: CTRL Sample Type: Human Adult Placenta Antibody Dilution: 1.0ug/ml

Please check the [product details page](#) for more images. Overall 4 images are available for ABIN2778163.