



[Go to Product page](#)

Datasheet for ABIN2778167

anti-PNLIPRP2 antibody (C-Term)

1 Image

Overview

Quantity:	100 µL
Target:	PNLIPRP2
Binding Specificity:	C-Term
Reactivity:	Human, Mouse, Rat, Cow, Guinea Pig, Horse, Pig, Rabbit
Host:	Rabbit
Clonality:	Polyclonal
Conjugate:	This PNLIPRP2 antibody is un-conjugated
Application:	Western Blotting (WB)

Product Details

Immunogen:	The immunogen is a synthetic peptide directed towards the C-terminal region of Human PNLIPRP2
Sequence:	YADQFKGKTS AVEQTFLLNT GESGNFTSWR YKVSVTLSGK EKVNGYIRIA
Predicted Reactivity:	Cow: 86%, Guinea Pig: 79%, Horse: 86%, Human: 100%, Mouse: 79%, Pig: 86%, Rabbit: 86%, Rat: 86%
Characteristics:	This is a rabbit polyclonal antibody against PNLIPRP2. It was validated on Western Blot.
Purification:	Affinity Purified

Target Details

Target:	PNLIPRP2
---------	----------

Target Details

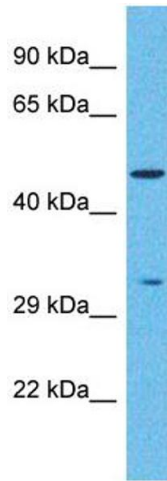
Alternative Name:	PNLIPRP2 (PNLIPRP2 Products)
Background:	<p>PNLIPRP2 is a lipase with broad substrate specificity. It can hydrolyze both phospholipids and galactolipids. It acts preferentially on monoglycerides, phospholipids and galactolipids.</p> <p>PNLIPRP2 also contributes to milk fat hydrolysis.</p> <p>Protein Interaction Partner: TANGO2, DDX46, CLPS,</p> <p>Protein Size: 469</p>
Molecular Weight:	51 kDa
Gene ID:	5408
UniProt:	P54317
Pathways:	Lipid Metabolism

Application Details

Application Notes:	Optimal working dilution should be determined by the investigator.
Restrictions:	For Research Use only

Handling

Format:	Liquid
Concentration:	1 mg/mL
Buffer:	Liquid. Purified antibody supplied in 1x PBS buffer with 0.09 % (w/v) sodium azide and 2 % sucrose.
Preservative:	Sodium azide
Precaution of Use:	This product contains Sodium azide: a POISONOUS AND HAZARDOUS SUBSTANCE which should be handled by trained staff only.
Handling Advice:	Avoid repeat freeze-thaw cycles.
Storage:	-20 °C
Storage Comment:	For short term use, store at 2-8°C up to 1 week. For long term storage, store at -20°C in small aliquots to prevent freeze-thaw cycles.



Western Blotting

Image 1. Host: Rabbit Target Name: PNLIPRP2 Sample Type: Stomach Tumor lysates Antibody Dilution: 1.0ug/ml