

Datasheet for ABIN2778171
anti-SMPDL3B antibody (N-Term)[Go to Product page](#)

3 Images

Overview

Quantity:	100 µL
Target:	SMPDL3B
Binding Specificity:	N-Term
Reactivity:	Human, Mouse, Rat, Cow, Dog, Guinea Pig, Horse, Rabbit, Zebrafish (Danio rerio)
Host:	Rabbit
Clonality:	Polyclonal
Conjugate:	This SMPDL3B antibody is un-conjugated
Application:	Western Blotting (WB), Immunohistochemistry (IHC)

Product Details

Immunogen:	The immunogen is a synthetic peptide directed towards the N terminal region of human SMPDL3B
Sequence:	ILWTGDDTPH VPDEKLGEAA VLEIVERLTK LIREVFPDTK VYAALGNHDF
Predicted Reactivity:	Cow: 85%, Dog: 85%, Guinea Pig: 100%, Horse: 92%, Human: 100%, Mouse: 85%, Rabbit: 92%, Rat: 85%, Zebrafish: 85%
Characteristics:	This is a rabbit polyclonal antibody against SMPDL3B. It was validated on Western Blot and immunohistochemistry.
Purification:	Affinity Purified

Target Details

Target:	SMPDL3B
---------	---------

Target Details

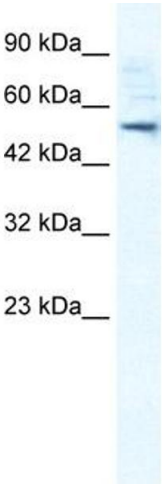
Alternative Name:	SMPDL3B (SMPDL3B Products)
Background:	Located on chromosome 1, this gene encodes for acid sphingomyelinase-like phosphodiesterase 3b precursor protein. Alias Symbols: ASML3B Protein Interaction Partner: PAN2, Protein Size: 463
Molecular Weight:	52 kDa
Gene ID:	27293
NCBI Accession:	NM_014474 , NP_055289
UniProt:	Q92485

Application Details

Application Notes:	Optimal working dilutions should be determined experimentally by the investigator.
Comment:	Antigen size: 463 AA
Restrictions:	For Research Use only

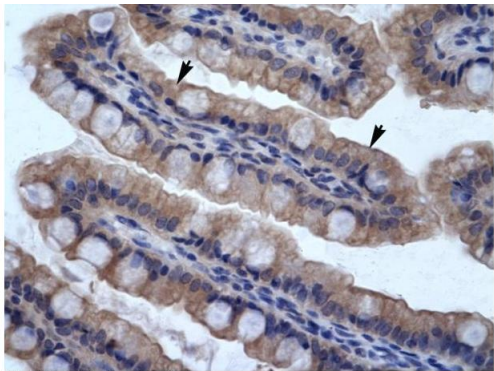
Handling

Format:	Liquid
Concentration:	Lot specific
Buffer:	Liquid. Purified antibody supplied in 1x PBS buffer with 0.09 % (w/v) sodium azide and 2 % sucrose.
Preservative:	Sodium azide
Precaution of Use:	This product contains Sodium azide: a POISONOUS AND HAZARDOUS SUBSTANCE which should be handled by trained staff only.
Handling Advice:	Avoid repeated freeze-thaw cycles.
Storage:	-20 °C
Storage Comment:	For short term use, store at 2-8°C up to 1 week. For long term storage, store at -20°C in small aliquots to prevent freeze-thaw cycles.



Western Blotting

Image 1. WB Suggested Anti-SMPDL3B Antibody Titration: 0.2-1 ug/ml Positive Control: Raji cell lysate SMPDL3B is supported by BioGPS gene expression data to be expressed in Raji



Rabbit Anti-SMPDL3B Antibody
Catalog Number: ARP33875
Lot Number: QC3281
Paraffin Embedded Tissue: Human Intestine
Cells with Positive label: Epithelial cells of intestinal villus(Indicated with Arrows)
Antibody Concentration: 4.0-8.0 µg/ml
Magnification: 400X

Immunohistochemistry

Image 2. Human Intestine

SMPDL3B



Western Blotting

Image 3. Host: Rabbit Target Name: SMPDL3B Sample Tissue: Human Fetal Lung Antibody Dilution: 1.0ug/ml