

Datasheet for ABIN2778184 anti-KIF5B antibody (N-Term)



[Go to Product page](#)

3 Images

1 Publication

Overview

Quantity:	100 µL
Target:	KIF5B
Binding Specificity:	N-Term
Reactivity:	Human, Mouse, Rat, Dog, Cow, Pig, Zebrafish (Danio rerio)
Host:	Rabbit
Clonality:	Polyclonal
Conjugate:	This KIF5B antibody is un-conjugated
Application:	Western Blotting (WB), Immunohistochemistry (IHC)

Product Details

Immunogen:	The immunogen is a synthetic peptide directed towards the N terminal region of human KIF5B
Sequence:	CNIKVMCRFR PLNESEVNRG DKYIAKFQGE DTVVIASKPY AFDRVFSST
Predicted Reactivity:	Cow: 100%, Dog: 100%, Human: 100%, Mouse: 93%, Pig: 100%, Rat: 93%, Zebrafish: 86%
Characteristics:	This is a rabbit polyclonal antibody against KIF5B. It was validated on Western Blot and immunohistochemistry.
Purification:	Affinity Purified

Target Details

Target:	KIF5B
Alternative Name:	KIF5B (KIF5B Products)

Target Details

Background:	<p>Kinesin is the founding member of a superfamily of microtubule based motor proteins that perform force-generating tasks such as organelle transport and chromosome segregation.</p> <p>Kinesin consists of heavy and light chains both of which have been documented to bind a variety of potential linker or cargo proteins. KIF5B is an isoform of kinesin heavy chain.</p> <p>Alias Symbols: KNS, KINH, KNS1, UKHC</p> <p>Protein Interaction Partner: ZBTB8A, HUWE1, TAX1BP1, VPS52, PRKAR2B, AURKB, STAU1, UBC, TRIM25, EZH2, PSME1, PSMB7, PSMB6, PSMB5, PSMB4, PSMB3, PSMA5, PSMA4, KLC2, SMEK2, RNF20, ELP2, PTPN23, RABGAP1, COPE, AKAP2, COPS5, NUP50, PSMA2, KLC1, EPB41L1, DIAPH1, CAST, ACACA, YWHAE, CFTR,</p> <p>Protein Size: 963</p>
Molecular Weight:	110 kDa
Gene ID:	3799
NCBI Accession:	NM_004521 , NP_004512
UniProt:	P33176
Pathways:	Peptide Hormone Metabolism , Ribonucleoprotein Complex Subunit Organization

Application Details

Application Notes:	Optimal working dilutions should be determined experimentally by the investigator.
Comment:	Antigen size: 963 AA
Restrictions:	For Research Use only

Handling

Format:	Liquid
Concentration:	Lot specific
Buffer:	Liquid. Purified antibody supplied in 1x PBS buffer with 0.09 % (w/v) sodium azide and 2 % sucrose.
Preservative:	Sodium azide
Precaution of Use:	This product contains Sodium azide: a POISONOUS AND HAZARDOUS SUBSTANCE which should be handled by trained staff only.
Handling Advice:	Avoid repeated freeze-thaw cycles.

Handling

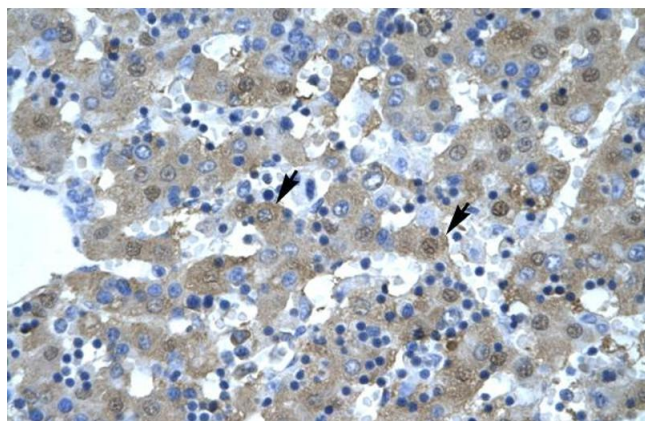
Storage: -20 °C

Storage Comment: For short term use, store at 2-8°C up to 1 week. For long term storage, store at -20°C in small aliquots to prevent freeze-thaw cycles.

Publications

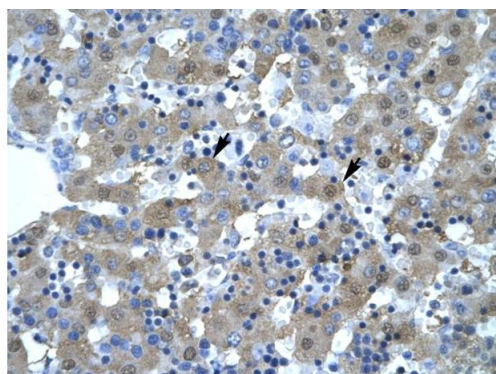
Product cited in: Gerhard, Wagner, Feingold, Shenmen, Grouse, Schuler, Klein, Old, Rasooly, Good, Guyer, Peck, Derge, Lipman, Collins, Jang, Sherry, Feolo, Misquitta, Lee, Rotmistrovsky, Greenhut, Schaefer, Buetow et al.: "The status, quality, and expansion of the NIH full-length cDNA project: the Mammalian Gene Collection (MGC). ..." in: **Genome research**, Vol. 14, Issue 10B, pp. 2121-7, (2004) ([PubMed](#)).

Images



Immunohistochemistry

Image 1. Human Liver



Immunohistochemistry

Image 2. Human Liver

Rabbit Anti-KIF5B Antibody
Catalog Number: ARP33903
Lot Number: QC3300
Paraffin Embedded Tissue: Human Liver
Cells with Positive label: Hepatocytes (Indicated with Arrows)
Antibody Concentration: 4.0-8.0 µg/ml
Magnification: 400X



Western Blotting

Image 3. WB Suggested Anti-KIF5B Antibody Titration: 0.2-1 ug/ml Positive Control: Human brain