

Datasheet for ABIN2778189
anti-KIFC3 antibody (C-Term)[Go to Product page](#)

1 Image

1 Publication

Overview

Quantity:	100 µL
Target:	KIFC3
Binding Specificity:	C-Term
Reactivity:	Human, Rat, Mouse, Cow, Dog, Rabbit, Guinea Pig
Host:	Rabbit
Clonality:	Polyclonal
Conjugate:	This KIFC3 antibody is un-conjugated
Application:	Western Blotting (WB)

Product Details

Immunogen:	The immunogen is a synthetic peptide directed towards the C terminal region of human KIFC3
Sequence:	EHLEWEPACQ TPQPSARAHS APSSGTSSRP GSIRRLQPS GKSRLPV
Predicted Reactivity:	Cow: 86%, Dog: 86%, Guinea Pig: 92%, Human: 100%, Mouse: 92%, Rabbit: 86%, Rat: 92%
Characteristics:	This is a rabbit polyclonal antibody against KIFC3. It was validated on Western Blot using a cell lysate as a positive control.
Purification:	Affinity Purified

Target Details

Target:	KIFC3
Alternative Name:	KIFC3 (KIFC3 Products)

Target Details

Background:	<p>KIFC3 belongs to the kinesin-like protein family. It contains 1 kinesin-motor domain. KIFC3 is the minus-end microtubule-dependent motor protein. It is involved in apically targeted transport.</p> <p>Alias Symbols: DKFZp686D23201</p> <p>Protein Interaction Partner: CEP170P1, KRT6C, CEP57L1, KANSL1, FAM124A, SPERT, TCEANC, CCDC67, ZNF572, ICA1L, KRT40, HAUS1, SYCE1, TRIM41, TSR2, ZGPAT, LZTS2, DTNBP1, NDEL1, CCDC33, CCDC102B, CLIP4, LENG1, ZNF655, CCDC136, GMCL1, CBX8, TRIM54, LIN37, CEP55, FANCL, USP47, C1orf109, NE</p> <p>Protein Size: 833</p>
Molecular Weight:	93 kDa
Gene ID:	3801
NCBI Accession:	NM_005550 , NP_005541
UniProt:	Q9BVG8
Pathways:	Cell-Cell Junction Organization

Application Details

Application Notes:	Optimal working dilutions should be determined experimentally by the investigator.
Comment:	Antigen size: 833 AA
Restrictions:	For Research Use only

Handling

Format:	Liquid
Concentration:	Lot specific
Buffer:	Liquid. Purified antibody supplied in 1x PBS buffer with 0.09 % (w/v) sodium azide and 2 % sucrose.
Preservative:	Sodium azide
Precaution of Use:	This product contains Sodium azide: a POISONOUS AND HAZARDOUS SUBSTANCE which should be handled by trained staff only.
Handling Advice:	Avoid repeated freeze-thaw cycles.
Storage:	-20 °C

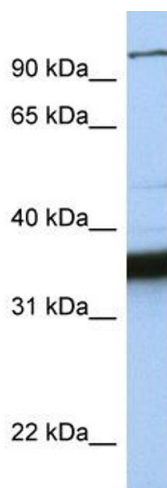
Handling

Storage Comment: For short term use, store at 2-8°C up to 1 week. For long term storage, store at -20°C in small aliquots to prevent freeze-thaw cycles.

Publications

Product cited in: Timmusk, Merlot, Lövgren, Järvekülg, Berg, Fossum: "Regulator of G protein signalling 16 is a target for a porcine circovirus type 2 protein." in: **The Journal of general virology**, Vol. 90, Issue Pt 10, pp. 2425-36, (2009) ([PubMed](#)).

Images



Western Blotting

Image 1. WB Suggested Anti-KIFC3 Antibody Titration: 0.2-1 ug/ml Positive Control: MCF7 cell lysate