



[Go to Product page](#)

Datasheet for ABIN2778193  
**anti-KIF22 antibody (N-Term)**

2 Images

Overview

Quantity:	100 µL
Target:	KIF22
Binding Specificity:	N-Term
Reactivity:	Human, Mouse, Rat, Dog, Guinea Pig, Cow, Horse, Saccharomyces cerevisiae
Host:	Rabbit
Clonality:	Polyclonal
Conjugate:	This KIF22 antibody is un-conjugated
Application:	Western Blotting (WB)

Product Details

Immunogen:	The immunogen is a synthetic peptide directed towards the N terminal region of human KIF22
Sequence:	CSLEIANWRN HQETLKYQFD AFYGERSTQQ DIYAGSVQPI LRHLLEGQNA
Predicted Reactivity:	Cow: 100%, Dog: 100%, Guinea Pig: 100%, Horse: 100%, Human: 100%, Mouse: 93%, Rat: 100%, Yeast: 89%
Characteristics:	This is a rabbit polyclonal antibody against KIF22. It was validated on Western Blot using a cell lysate as a positive control.
Purification:	Affinity Purified

Target Details

Target:	KIF22
---------	-------

## Target Details

---

Alternative Name:	KIF22 ( <a href="#">KIF22 Products</a> )
Background:	<p>KIF22 a member of kinesin-like protein family. This family of proteins are microtubule-dependent molecular motors that transport organelles within cells and move chromosomes during cell division. The C-terminal half of this protein has been shown to bind DNA. Studies with the <i>Xenopus</i> homolog suggests its essential role in metaphase chromosome alignment and maintenance. The protein encoded by this gene is a member of kinesin-like protein family. This family of proteins are microtubule-dependent molecular motors that transport organelles within cells and move chromosomes during cell division. The C-terminal half of this protein has been shown to bind DNA. Studies with the <i>Xenopus</i> homolog suggests its essential role in metaphase chromosome alignment and maintenance. Publication Note: This RefSeq record includes a subset of the publications that are available for this gene. Please see the Entrez Gene record to access additional publications.</p> <p>Alias Symbols: KID, KNSL4, OBP, OBP-1, OBP-2, SEMDJL2, A-328A3.2</p> <p>Protein Interaction Partner: UBC, ATXN1, CHFR, SUMO2, SVIL, tat, SIAH1, GDF9, IMMT, PJA1, Protein Size: 665</p>
Molecular Weight:	73 kDa
Gene ID:	3835
NCBI Accession:	<a href="#">NM_007317</a> , <a href="#">NP_015556</a>
UniProt:	<a href="#">Q14807</a>

## Application Details

---

Application Notes:	Optimal working dilutions should be determined experimentally by the investigator.
Comment:	Antigen size: 665 AA
Restrictions:	For Research Use only

## Handling

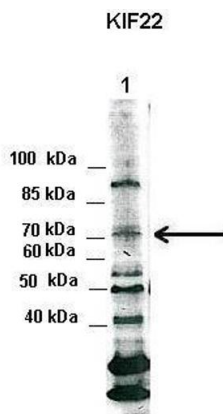
---

Format:	Liquid
Concentration:	Lot specific
Buffer:	Liquid. Purified antibody supplied in 1x PBS buffer with 0.09 % (w/v) sodium azide and 2 % sucrose.
Preservative:	Sodium azide

## Handling

Precaution of Use:	This product contains Sodium azide: a POISONOUS AND HAZARDOUS SUBSTANCE which should be handled by trained staff only.
Handling Advice:	Avoid repeated freeze-thaw cycles.
Storage:	-20 °C
Storage Comment:	For short term use, store at 2-8°C up to 1 week. For long term storage, store at -20°C in small aliquots to prevent freeze-thaw cycles.

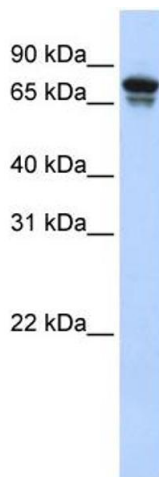
## Images



### Western Blotting

**Image 1.** Lanes: 1. Xenopus laevis egg extract 0.3 ul/lane  
Primary Antibody Dilution: 1:1000 Secondary Antibody: Anti-Rabbit HRP Secondary Antibody Dilution: 1:5000 Gene Name: KIF22 Submitted by: Anonymous

See Immunoblot 2 Data and Customer Feedback for more information



### Western Blotting

**Image 2.** WB Suggested Anti-KIF22 Antibody Titration: 0.2-1 ug/ml ELISA Titer: 1:62500 Positive Control: Transfected 293T