

Datasheet for ABIN2778195
anti-KIF25 antibody (C-Term)[Go to Product page](#)

3 Images

Overview

Quantity:	100 µL
Target:	KIF25
Binding Specificity:	C-Term
Reactivity:	Human, Dog, Guinea Pig, Horse, Rat
Host:	Rabbit
Clonality:	Polyclonal
Conjugate:	This KIF25 antibody is un-conjugated
Application:	Western Blotting (WB), Immunohistochemistry (IHC)

Product Details

Immunogen:	The immunogen is a synthetic peptide directed towards the C terminal region of human KIF25
Sequence:	VLGALLEHRG HAPYRNSRLT HLLQDCLGGD AKLLVILCIS PSQRHLAQTL
Predicted Reactivity:	Dog: 79%, Guinea Pig: 86%, Horse: 79%, Human: 100%, Rat: 79%
Characteristics:	This is a rabbit polyclonal antibody against KIF25. It was validated on Western Blot and immunohistochemistry.
Purification:	Protein A purified

Target Details

Target:	KIF25
Alternative Name:	KIF25 (KIF25 Products)

Target Details

Background:	<p>The protein encoded by the KIF25 gene is a member of the kinesin-like protein family. Protein family members are microtubule-dependent molecular motors that transport organelles within cells and move chromosomes during cell division. However, the particular function of this gene product has not yet been determined. Two alternatively spliced transcript variants which encode products have been described. Other splice variants have been found that lack exon 2 and the initiation codon for translation.</p> <p>Alias Symbols: KNSL3</p> <p>Protein Size: 384</p>
-------------	--

Molecular Weight:	41 kDa
-------------------	--------

Gene ID:	3834
----------	------

NCBI Accession:	NM_030615 , NP_085118
-----------------	---

UniProt:	Q9UIL4
----------	------------------------

Application Details

Application Notes:	Optimal working dilutions should be determined experimentally by the investigator.
--------------------	--

Comment:	Antigen size: 384 AA
----------	----------------------

Restrictions:	For Research Use only
---------------	-----------------------

Handling

Format:	Liquid
---------	--------

Concentration:	Lot specific
----------------	--------------

Buffer:	Liquid. Purified antibody supplied in 1x PBS buffer with 0.09 % (w/v) sodium azide and 2 % sucrose.
---------	---

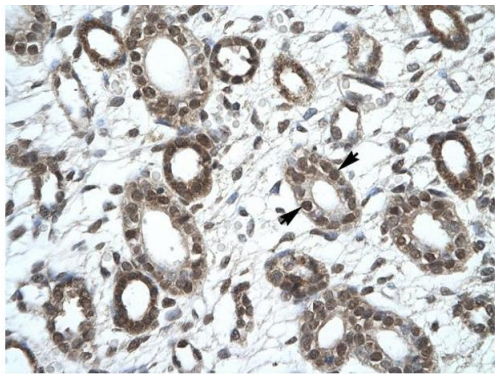
Preservative:	Sodium azide
---------------	--------------

Precaution of Use:	This product contains Sodium azide: a POISONOUS AND HAZARDOUS SUBSTANCE which should be handled by trained staff only.
--------------------	--

Handling Advice:	Avoid repeated freeze-thaw cycles.
------------------	------------------------------------

Storage:	-20 °C
----------	--------

Storage Comment:	For short term use, store at 2-8°C up to 1 week. For long term storage, store at -20°C in small aliquots to prevent freeze-thaw cycles.
------------------	---



Rabbit Anti-KIF25 Antibody
Catalog Number: ARP33925
Lot Number: QC3314
Paraffin Embedded Tissue: Human Kidney
Cells with Positive label: Epithelial cells of collecting tubule (Indicated with Arrows)
Antibody Concentration: 4.0-8.0 µg/ml
Magnification: 400X

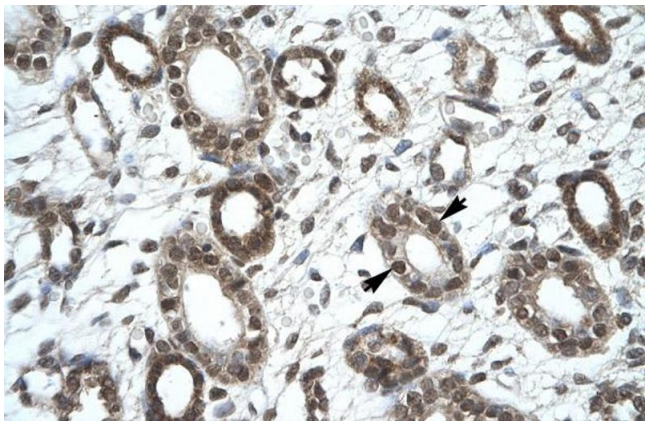


Immunohistochemistry

Image 1. Human kidney

Western Blotting

Image 2. WB Suggested Anti-KIF25 Antibody Titration:
2.5ug/ml Positive Control: HepG2 cell lysate



Immunohistochemistry

Image 3. Human kidney