

Datasheet for ABIN2778196
anti-KIF13B antibody (N-Term)

3 Images

[Go to Product page](#)

Overview

Quantity:	100 µL
Target:	KIF13B
Binding Specificity:	N-Term
Reactivity:	Human, Mouse, Rat, Rabbit, Cow, Dog, Guinea Pig, Horse
Host:	Rabbit
Clonality:	Polyclonal
Conjugate:	This KIF13B antibody is un-conjugated
Application:	Western Blotting (WB), Immunohistochemistry (IHC)

Product Details

Immunogen:	The immunogen is a synthetic peptide directed towards the N terminal region of human KIF13B
Sequence:	SGKSYTMMGT ADQPGLIPRL CSGLFERTQK EENEEQSFKV EVSYMEIYNE
Predicted Reactivity:	Cow: 100%, Dog: 100%, Guinea Pig: 100%, Horse: 92%, Human: 100%, Mouse: 100%, Rabbit: 100%, Rat: 100%
Characteristics:	This is a rabbit polyclonal antibody against KIF13B. It was validated on Western Blot using a cell lysate as a positive control.
Purification:	Affinity Purified

Target Details

Target:	KIF13B
---------	--------

Target Details

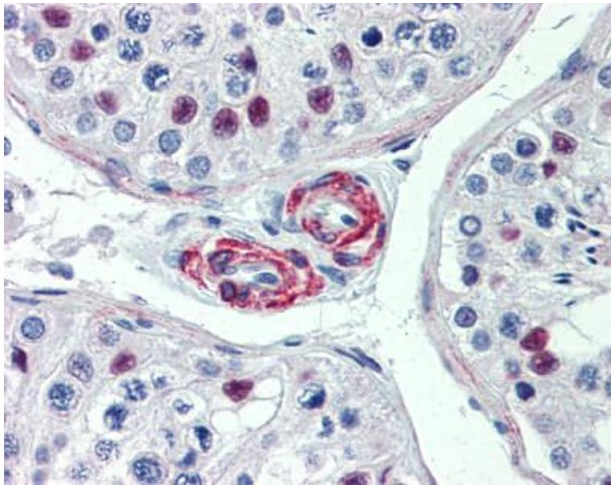
Alternative Name:	KIF13B (KIF13B Products)
Background:	<p>KIF13B may be involved in reorganization of the cortical cytoskeleton. KIF13B may be functionally important for the intracellular trafficking of MAGUKs and associated protein complexes.</p> <p>Alias Symbols: GAKIN, KIAA0639</p> <p>Protein Interaction Partner: UBC, YWHAB, MARK2, PPP1CA, CUL3, BCL6, TERF2, DLG4, DLG1,</p> <p>Protein Size: 1826</p>
Molecular Weight:	203 kDa
Gene ID:	23303
NCBI Accession:	NM_015254 , NP_056069
UniProt:	Q9NQ78

Application Details

Application Notes:	Optimal working dilutions should be determined experimentally by the investigator.
Comment:	Antigen size: 1826 AA
Restrictions:	For Research Use only

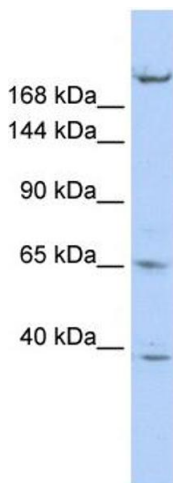
Handling

Format:	Liquid
Concentration:	Lot specific
Buffer:	Liquid. Purified antibody supplied in 1x PBS buffer with 0.09 % (w/v) sodium azide and 2 % sucrose.
Preservative:	Sodium azide
Precaution of Use:	This product contains Sodium azide: a POISONOUS AND HAZARDOUS SUBSTANCE which should be handled by trained staff only.
Handling Advice:	Avoid repeated freeze-thaw cycles.
Storage:	-20 °C
Storage Comment:	For short term use, store at 2-8°C up to 1 week. For long term storage, store at -20°C in small aliquots to prevent freeze-thaw cycles.



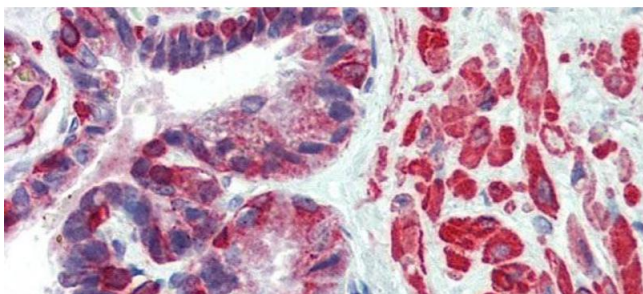
Immunohistochemistry

Image 1.



Western Blotting

Image 2. WB Suggested Anti-KIF13B Antibody Titration: 1 ug/ml Positive Control: HepG2 cell lysate KIF13B is supported by BioGPS gene expression data to be expressed in HepG2



Immunohistochemistry

Image 3. Rabbit Anti-KIF13B Antibody arp33926 Paraffin Embedded Tissue: Human Prostate Antibody Concentration: 5 ug/ml