

Datasheet for ABIN2778198
anti-KIF21A antibody (N-Term)[Go to Product page](#)

2 Images

1 Publication

Overview

Quantity:	100 µL
Target:	KIF21A
Binding Specificity:	N-Term
Reactivity:	Human, Mouse, Dog, Horse, Cow, Rat, Guinea Pig, Pig, Rabbit, Saccharomyces cerevisiae
Host:	Rabbit
Clonality:	Polyclonal
Conjugate:	This KIF21A antibody is un-conjugated
Application:	Western Blotting (WB)

Product Details

Immunogen:	The immunogen is a synthetic peptide directed towards the N terminal region of human KIF21A
Sequence:	KEKRKKKSVA GKEDNTDTDQ EKKEEKGVSE RENNELEVVEE SQEVSDHEDE
Predicted Reactivity:	Cow: 100%, Dog: 100%, Guinea Pig: 79%, Horse: 86%, Human: 100%, Mouse: 86%, Pig: 93%, Rabbit: 93%, Rat: 86%, Yeast: 77%
Characteristics:	This is a rabbit polyclonal antibody against KIF21A. It was validated on Western Blot using a cell lysate as a positive control.
Purification:	Affinity Purified

Target Details

Target:	KIF21A
---------	--------

Target Details

Alternative Name:	KIF21A (KIF21A Products)
Background:	<p>KIF21A belongs to a family of plus end-directed kinesin motor proteins. Neurons use kinesin and dynein microtubule-dependent motor proteins to transport essential cellular components along axonal and dendritic microtubules.</p> <p>Alias Symbols: FEOM1, CFEOM1, FEOM3A</p> <p>Protein Interaction Partner: NCS1, SRP72, SRP68, UBC, ELAVL1,</p> <p>Protein Size: 1661</p>
Molecular Weight:	186 kDa
Gene ID:	55605
NCBI Accession:	NM_017641 , NP_060111
UniProt:	Q7Z4S6
Pathways:	M Phase

Application Details

Application Notes:	Optimal working dilutions should be determined experimentally by the investigator.
Comment:	Antigen size: 1661 AA
Restrictions:	For Research Use only

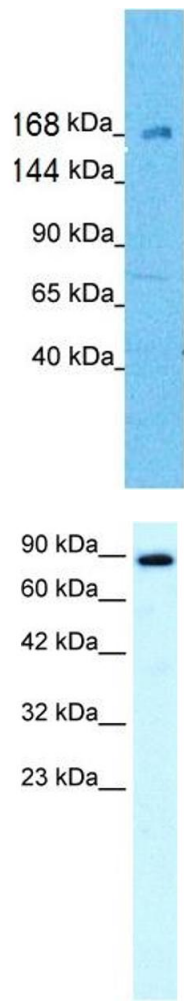
Handling

Format:	Liquid
Concentration:	Lot specific
Buffer:	Liquid. Purified antibody supplied in 1x PBS buffer with 0.09 % (w/v) sodium azide and 2 % sucrose.
Preservative:	Sodium azide
Precaution of Use:	This product contains Sodium azide: a POISONOUS AND HAZARDOUS SUBSTANCE which should be handled by trained staff only.
Handling Advice:	Avoid repeated freeze-thaw cycles.
Storage:	-20 °C
Storage Comment:	For short term use, store at 2-8°C up to 1 week. For long term storage, store at -20°C in small aliquots to prevent freeze-thaw cycles.

Publications

Product cited in: Bertin, Dury, Ouellet, Pelletier, Labrie: "Localization of the androgen-synthesizing enzymes, androgen receptor, and sex steroids in the vagina: possible implications for the treatment of postmenopausal sexual dysfunction." in: **The journal of sexual medicine**, Vol. 11, Issue 8, pp. 1949-61, (2014) ([PubMed](#)).

Images



Western Blotting

Image 1.

Western Blotting

Image 2. WB Suggested Anti-KIF21A Antibody Titration: 0.2-1 ug/ml Positive Control: Human brain