

Datasheet for ABIN2778202
anti-KIF23 antibody (Middle Region)[Go to Product page](#)

2 Images

Overview

Quantity:	100 µL
Target:	KIF23
Binding Specificity:	Middle Region
Reactivity:	Human, Mouse, Rat, Cow, Horse, Rabbit, Dog, Pig, Zebrafish (Danio rerio), Guinea Pig
Host:	Rabbit
Clonality:	Polyclonal
Conjugate:	This KIF23 antibody is un-conjugated
Application:	Western Blotting (WB), Immunohistochemistry (IHC)

Product Details

Immunogen:	The immunogen is a synthetic peptide directed towards the middle region of human KIF23
Sequence:	HMQGKLNEKE KMISGQKLEI ERLEKKNKTL EYKIEILEKT TTIYEEDKRN
Predicted Reactivity:	Cow: 100%, Dog: 100%, Guinea Pig: 93%, Horse: 100%, Human: 100%, Mouse: 100%, Pig: 100%, Rabbit: 100%, Rat: 100%, Zebrafish: 79%
Characteristics:	This is a rabbit polyclonal antibody against KIF23. It was validated on Western Blot using a cell lysate as a positive control.
Purification:	Affinity Purified

Target Details

Target:	KIF23
---------	-------

Target Details

Alternative Name:	KIF23 (KIF23 Products)
Background:	<p>KIF23 is a member of kinesin-like protein family. This family includes microtubule-dependent molecular motors that transport organelles within cells and move chromosomes during cell division. This protein has been shown to cross-bridge antiparallel microtubules and drive microtubule movement in vitro. Alternate splicing of this gene results in two transcript variants encoding two different isoforms. The protein encoded by this gene is a member of kinesin-like protein family. This family includes microtubule-dependent molecular motors that transport organelles within cells and move chromosomes during cell division. This protein has been shown to cross-bridge antiparallel microtubules and drive microtubule movement in vitro. Alternate splicing of this gene results in two transcript variants encoding two different isoforms.</p> <p>Alias Symbols: CHO1, KNSL5, MKLP-1, MKLP1</p> <p>Protein Interaction Partner: UBC, YWHAQ, YWHAЕ, RACGAP1, XRCC6, IKBKG, SIRT7, SH3KBP1, SUMO2, Kif23, Dctn2, Shcbp1, Cd2ap, YWHAZ, YWHAH, YWHAG, YWHAB, STK11, CENPA, PRC1, FYCO1, PLK1, ARF3, ACTA1, BIRC6, USP8, PKLR, SFN,</p> <p>Protein Size: 856</p>
Molecular Weight:	98 kDa
Gene ID:	9493
NCBI Accession:	NM_004856 , NP_004847

Application Details

Application Notes:	Optimal working dilutions should be determined experimentally by the investigator.
Comment:	Antigen size: 856 AA
Restrictions:	For Research Use only

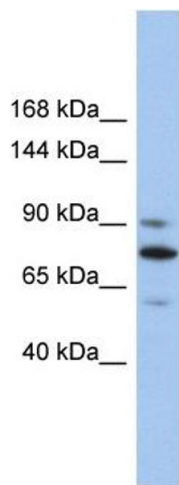
Handling

Format:	Liquid
Concentration:	Lot specific
Buffer:	Liquid. Purified antibody supplied in 1x PBS buffer with 0.09 % (w/v) sodium azide and 2 % sucrose.
Preservative:	Sodium azide

Handling

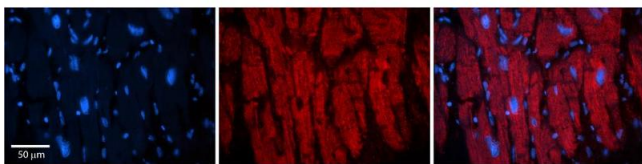
Precaution of Use:	This product contains Sodium azide: a POISONOUS AND HAZARDOUS SUBSTANCE which should be handled by trained staff only.
Handling Advice:	Avoid repeated freeze-thaw cycles.
Storage:	-20 °C
Storage Comment:	For short term use, store at 2-8°C up to 1 week. For long term storage, store at -20°C in small aliquots to prevent freeze-thaw cycles.

Images



Western Blotting

Image 1. WB Suggested Anti-KIF23 Antibody Titration: 0.2-1 ug/ml ELISA Titer: 1:312500 Positive Control: COLO205 cell lysate



Immunohistochemistry

Image 2. Rabbit Anti-KIF23 Antibody Formalin Fixed Paraffin Embedded Tissue: Human Adult heart Observed Staining: Cytoplasmic (cytoskeleton) Primary Antibody Concentration: 1:600 Secondary Antibody: Donkey anti-Rabbit-Cy2/3 Secondary Antibody Concentration: 1:200 Magnification: 20X Exposure Time: 0.5 – 2.0 sec Protocol located in Reviews and Data.