

Datasheet for ABIN2778203
anti-KIFC2 antibody (N-Term)[Go to Product page](#)

3 Images

Overview

Quantity:	100 µL
Target:	KIFC2
Binding Specificity:	N-Term
Reactivity:	Human, Cow, Horse, Mouse
Host:	Rabbit
Clonality:	Polyclonal
Conjugate:	This KIFC2 antibody is un-conjugated
Application:	Western Blotting (WB), Immunohistochemistry (IHC)

Product Details

Immunogen:	The immunogen is a synthetic peptide directed towards the N terminal region of human KIFC2
Sequence:	VRPPSPDGST SQEESPSHFT AVPGEPLGDE TQGQQLQLE EDQRAWQRLE
Predicted Reactivity:	Cow: 86%, Horse: 86%, Human: 100%, Mouse: 79%
Characteristics:	This is a rabbit polyclonal antibody against KIFC2. It was validated on Western Blot and immunohistochemistry.
Purification:	Protein A purified

Target Details

Target:	KIFC2
Alternative Name:	KIFC2 (KIFC2 Products)

Target Details

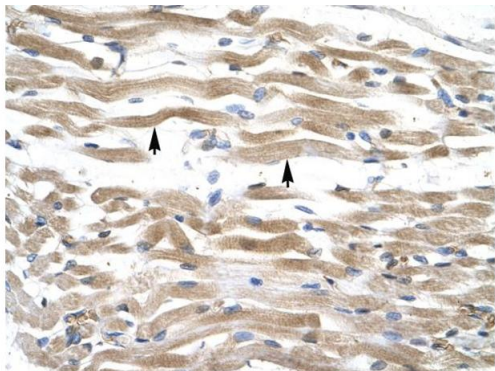
Background:	Members of the kinesin superfamily of microtubule-associated proteins are involved in a variety of intracellular processes including cell division and organelle transport. KIFC2 encodes a 792 amino acid protein, which contains the conserved motor domain at the C-terminal end of the protein and is most similar to members of the KAR3 family involved in cell division. Protein Interaction Partner: Dlg4, TEAD3, MAPK8IP2, TAB1, GET4, Protein Size: 838
Molecular Weight:	90 kDa
Gene ID:	90990
NCBI Accession:	NM_145754 , NP_665697
UniProt:	Q96AC6

Application Details

Application Notes:	Optimal working dilutions should be determined experimentally by the investigator.
Comment:	Antigen size: 838 AA
Restrictions:	For Research Use only

Handling

Format:	Liquid
Concentration:	Lot specific
Buffer:	Liquid. Purified antibody supplied in 1x PBS buffer with 0.09 % (w/v) sodium azide and 2 % sucrose.
Preservative:	Sodium azide
Precaution of Use:	This product contains Sodium azide: a POISONOUS AND HAZARDOUS SUBSTANCE which should be handled by trained staff only.
Handling Advice:	Avoid repeated freeze-thaw cycles.
Storage:	-20 °C
Storage Comment:	For short term use, store at 2-8°C up to 1 week. For long term storage, store at -20°C in small aliquots to prevent freeze-thaw cycles.



Rabbit Anti-KIFC2 Antibody
Catalog Number: ARP33950
Lot Number: QC3133
Paraffin Embedded Tissue: Human Muscle
Cells with Positive label: Skeletal muscle cells(Indicated with Arrows)
Antibody Concentration: 4.0-8.0 µg/ml
Magnification: 400X

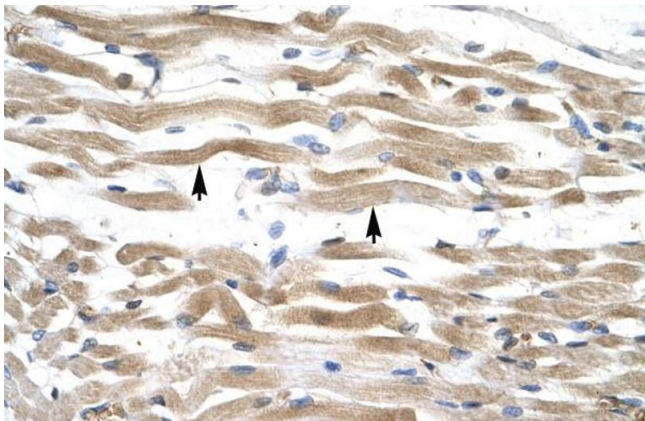
Immunohistochemistry

Image 1. Human Muscle



Western Blotting

Image 2. WB Suggested Anti-KIFC2 Antibody Titration:
1.25ug/ml Positive Control: Jurkat cell lysate



Immunohistochemistry

Image 3. Human Muscle