

Datasheet for ABIN2778204 anti-KIFC2 antibody (N-Term)



[Go to Product page](#)

1 Image

Overview

Quantity:	100 µL
Target:	KIFC2
Binding Specificity:	N-Term
Reactivity:	Human, Cow, Horse, Mouse, Dog, Guinea Pig, Rat, Saccharomyces cerevisiae
Host:	Rabbit
Clonality:	Polyclonal
Conjugate:	This KIFC2 antibody is un-conjugated
Application:	Western Blotting (WB)

Product Details

Immunogen:	The immunogen is a synthetic peptide directed towards the N terminal region of human KIFC2
Sequence:	TQGQQPLQLE EDQRAWQRLE QLILGQLEEL KQLEQEEEE LGRLRLGVGA
Predicted Reactivity:	Cow: 93%, Dog: 90%, Guinea Pig: 100%, Horse: 93%, Human: 100%, Mouse: 93%, Rat: 100%, Yeast: 75%
Characteristics:	This is a rabbit polyclonal antibody against KIFC2. It was validated on Western Blot using a cell lysate as a positive control.
Purification:	Affinity Purified

Target Details

Target:	KIFC2
---------	-------

Target Details

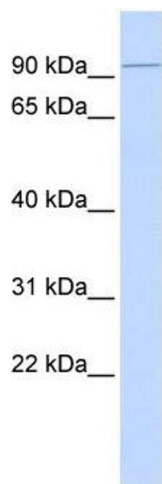
Alternative Name:	KIFC2 (KIFC2 Products)
Background:	<p>Members of the kinesin superfamily of microtubule-associated proteins are involved in a variety of intracellular processes including cell division and organelle transport. KIFC2 encodes a 792 amino acid protein, which contains the conserved motor domain at the C-terminal end of the protein and is most similar to members of the KAR3 family involved in cell division.</p> <p>Alias Symbols: -</p> <p>Protein Interaction Partner: Dlg4, TEAD3, MAPK8IP2, TAB1, GET4,</p> <p>Protein Size: 838</p>
Molecular Weight:	90 kDa
Gene ID:	90990
NCBI Accession:	NM_145754 , NP_665697
UniProt:	Q96AC6

Application Details

Application Notes:	Optimal working dilutions should be determined experimentally by the investigator.
Comment:	Antigen size: 838 AA
Restrictions:	For Research Use only

Handling

Format:	Liquid
Concentration:	Lot specific
Buffer:	Liquid. Purified antibody supplied in 1x PBS buffer with 0.09 % (w/v) sodium azide and 2 % sucrose.
Preservative:	Sodium azide
Precaution of Use:	This product contains Sodium azide: a POISONOUS AND HAZARDOUS SUBSTANCE which should be handled by trained staff only.
Handling Advice:	Avoid repeated freeze-thaw cycles.
Storage:	-20 °C
Storage Comment:	For short term use, store at 2-8°C up to 1 week. For long term storage, store at -20°C in small aliquots to prevent freeze-thaw cycles.



Western Blotting

Image 1. WB Suggested Anti-KIFC2 Antibody Titration: 0.2-1 ug/ml ELISA Titer: 1:12500 Positive Control: Human Muscle