



[Go to Product page](#)

Datasheet for ABIN2778209
anti-KIF9 antibody (N-Term)

1 Image

Overview

Quantity:	100 µL
Target:	KIF9
Binding Specificity:	N-Term
Reactivity:	Human, Mouse, Rat, Guinea Pig, Rabbit, Cow, Horse, Dog
Host:	Rabbit
Clonality:	Polyclonal
Conjugate:	This KIF9 antibody is un-conjugated
Application:	Western Blotting (WB)

Product Details

Immunogen:	The immunogen is a synthetic peptide directed towards the n terminal region of human KIF9
Sequence:	MGTRKKVHAF VRVKPTDDFA HEMIRYGDDK RSIDIHLKKD IRRGVVNNQQ
Predicted Reactivity:	Cow: 93%, Dog: 100%, Guinea Pig: 93%, Horse: 93%, Human: 100%, Mouse: 86%, Rabbit: 100%, Rat: 100%
Characteristics:	This is a rabbit polyclonal antibody against KIF9. It was validated on Western Blot using a cell lysate as a positive control.
Purification:	Affinity Purified

Target Details

Target:	KIF9
---------	------

Target Details

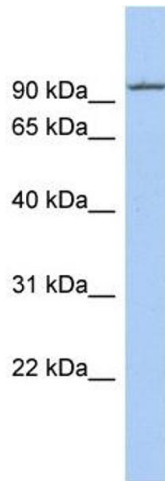
Alternative Name:	KIF9 (KIF9 Products)
Background:	The function of the KIF9 protein remains unknown. Alias Symbols: MGC104186 Protein Interaction Partner: ZBTB8A, KRTAP10-3, KRTAP10-9, SSX2IP, LZTS2, EFHC2, CARD9, PRMT6, ROPN1, IKZF1, JAKMIP2, TRIM27, TRIM37, Protein Size: 790
Molecular Weight:	90 kDa
Gene ID:	64147
NCBI Accession:	NM_182902 , NP_878905
UniProt:	Q9HAQ2

Application Details

Application Notes:	Optimal working dilutions should be determined experimentally by the investigator.
Comment:	Antigen size: 790 AA
Restrictions:	For Research Use only

Handling

Format:	Liquid
Concentration:	Lot specific
Buffer:	Liquid. Purified antibody supplied in 1x PBS buffer with 0.09 % (w/v) sodium azide and 2 % sucrose.
Preservative:	Sodium azide
Precaution of Use:	This product contains Sodium azide: a POISONOUS AND HAZARDOUS SUBSTANCE which should be handled by trained staff only.
Handling Advice:	Avoid repeated freeze-thaw cycles.
Storage:	-20 °C
Storage Comment:	For short term use, store at 2-8°C up to 1 week. For long term storage, store at -20°C in small aliquots to prevent freeze-thaw cycles.



Western Blotting

Image 1. WB Suggested Anti-KIF9 Antibody Titration: 0.2-1 ug/ml ELISA Titer: 1:62500 Positive Control: THP-1 cell lysate