

Datasheet for ABIN2778216

**anti-PARP12 antibody (Middle Region)**[Go to Product page](#)**2** Images

## Overview

Quantity:	100 µL
Target:	PARP12
Binding Specificity:	Middle Region
Reactivity:	Human, Mouse, Rat, Dog, Horse, Cow, Pig, Rabbit
Host:	Rabbit
Clonality:	Polyclonal
Conjugate:	This PARP12 antibody is un-conjugated
Application:	Western Blotting (WB), Immunohistochemistry (IHC)

## Product Details

Immunogen:	The immunogen is a synthetic peptide directed towards the middle region of human PARP12
Sequence:	FYDSCVNSVS DPSIFVIFEK HQVYPEYVIQ YTTSSKPSVT PSILLALGSL
Predicted Reactivity:	Cow: 85%, Dog: 79%, Horse: 93%, Human: 100%, Mouse: 86%, Pig: 100%, Rabbit: 83%, Rat: 86%
Characteristics:	This is a rabbit polyclonal antibody against PARP12. It was validated on Western Blot using a cell lysate as a positive control.
Purification:	Affinity Purified

## Target Details

Target:	PARP12
Alternative Name:	PARP12 ( <a href="#">PARP12 Products</a> )

## Target Details

Background:	The specific function of this protein remains unknown. Alias Symbols: FLJ22693, MST109, MSTP109, PARP-12, ZC3H1, ZC3HDC1 Protein Interaction Partner: RPA3, RPA2, RPA1, RNF2, CBX2, CBX4, UBC, MLH1, ELAVL1, BCL6, Protein Size: 701
Molecular Weight:	79 kDa
Gene ID:	64761
NCBI Accession:	<a href="#">NM_022750</a> , <a href="#">NP_073587</a>
UniProt:	<a href="#">Q9H0J9</a>

## Application Details

Application Notes:	Optimal working dilutions should be determined experimentally by the investigator.
Comment:	Antigen size: 701 AA
Restrictions:	For Research Use only

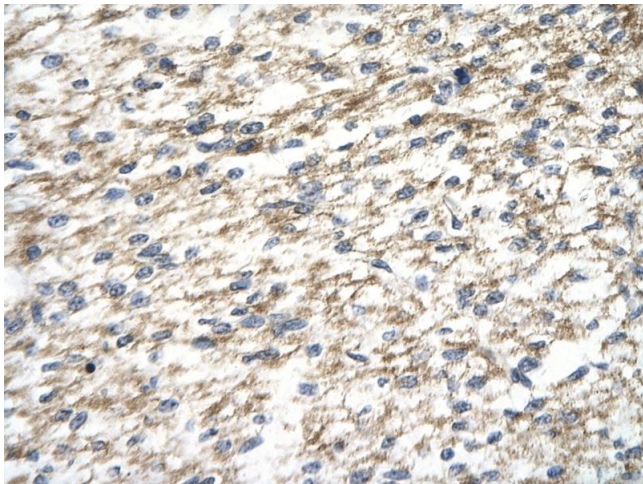
## Handling

Format:	Liquid
Concentration:	Lot specific
Buffer:	Liquid. Purified antibody supplied in 1x PBS buffer with 0.09 % (w/v) sodium azide and 2 % sucrose.
Preservative:	Sodium azide
Precaution of Use:	This product contains Sodium azide: a POISONOUS AND HAZARDOUS SUBSTANCE which should be handled by trained staff only.
Handling Advice:	Avoid repeated freeze-thaw cycles.
Storage:	-20 °C
Storage Comment:	For short term use, store at 2-8°C up to 1 week. For long term storage, store at -20°C in small aliquots to prevent freeze-thaw cycles.



### Western Blotting

**Image 1.** WB Suggested Anti-PAntibody Titration: 0.2-1 ug/ml ELISA Titer: 1:62500 Positive Control: ACHN cell lysate Pis supported by BioGPS gene expression data to be expressed in ACHN



### Immunohistochemistry

**Image 2.** Rabbit Anti-PAntibody Paraffin Embedded Tissue: Human cardiac cell Cellular Data: Epithelial cells of renal tubule Antibody Concentration: 4.0-8.0 ug/ml Magnification: 400X