



[Go to Product page](#)

Datasheet for ABIN2778220
anti-CBFA2T3 antibody (N-Term)

4 Images

Overview

Quantity:	100 µL
Target:	CBFA2T3
Binding Specificity:	N-Term
Reactivity:	Human, Mouse, Rat, Guinea Pig, Horse, Cow, Dog
Host:	Rabbit
Clonality:	Polyclonal
Conjugate:	This CBFA2T3 antibody is un-conjugated
Application:	Western Blotting (WB)

Product Details

Immunogen:	The immunogen is a synthetic peptide directed towards the N terminal region of human CBFA2T3
Sequence:	QPRSTPPSMP PPPPAASQGA TRPPSFTPHT LMNGSSHPT AINGAPCTPN
Predicted Reactivity:	Cow: 92%, Dog: 92%, Guinea Pig: 100%, Horse: 85%, Human: 100%, Mouse: 100%, Rat: 100%
Characteristics:	This is a rabbit polyclonal antibody against CBFA2T3. It was validated on Western Blot using a cell lysate as a positive control.
Purification:	Affinity Purified

Target Details

Target:	CBFA2T3
---------	---------

Target Details

Alternative Name:	CBFA2T3 (CBFA2T3 Products)
Background:	<p>The t(16,21)(q24,q22) translocation is a rare but recurrent chromosomal abnormality associated with therapy-related myeloid malignancies. The translocation produces a chimeric gene made up of the 5'-region of the AML1 gene fused to the 3'-region of CBFA2T3. In addition, CBFA2T3 is a putative breast tumor suppressor.</p> <p>Alias Symbols: ETO2, MTG16, MTGR2, ZMYND4</p> <p>Protein Interaction Partner: Zbtb38, Zbtb4, ZBTB33, GMEB2, SEC24A, MATN2, ZBTB47, UBC, RUNX1, TAL1, TRIM33, SIN3B, NCOR1, HDAC3, CBFA2T3, CBFA2T2, HDAC1, PRKAR2A, RUNX1T1, LDB1, TCF3, HDAC8, HDAC6, HDAC2,</p> <p>Protein Size: 567</p>
Molecular Weight:	62 kDa
Gene ID:	863
NCBI Accession:	NM_175931 , NP_787127
UniProt:	O75082

Application Details

Application Notes:	Optimal working dilutions should be determined experimentally by the investigator.
Comment:	Antigen size: 567 AA
Restrictions:	For Research Use only

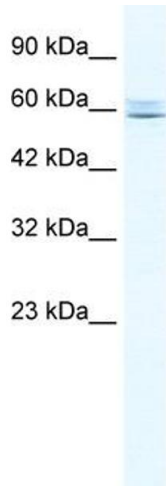
Handling

Format:	Liquid
Concentration:	Lot specific
Buffer:	Liquid. Purified antibody supplied in 1x PBS buffer with 0.09 % (w/v) sodium azide and 2 % sucrose.
Preservative:	Sodium azide
Precaution of Use:	This product contains Sodium azide: a POISONOUS AND HAZARDOUS SUBSTANCE which should be handled by trained staff only.
Handling Advice:	Avoid repeated freeze-thaw cycles.
Storage:	-20 °C

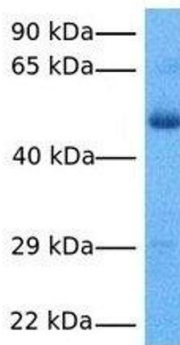
Handling

Storage Comment: For short term use, store at 2-8°C up to 1 week. For long term storage, store at -20°C in small aliquots to prevent freeze-thaw cycles.

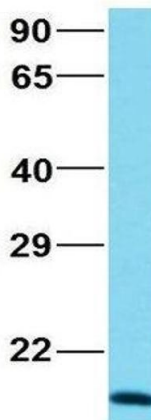
Images



CBFA2T3



CBFA2T3



Western Blotting

Image 1. WB Suggested Anti-CBFA2T3 Antibody Titration: 0.2-1 ug/ml Positive Control: Jurkat cell lysate CBFA2T3 is supported by BioGPS gene expression data to be expressed in Jurkat

Western Blotting

Image 2. Host: Rabbit Target Name: CBFA2T3 Sample Tissue: Human Fetal Lung Antibody Dilution: 1.0ug/ml

Western Blotting

Image 3. Host: Rabbit Target Name: NOP56 Sample Type: MCF7 Antibody Dilution: 1.0ug/ml CBFA2T3 is supported by BioGPS gene expression data to be expressed in MCF7

Please check the [product details page](#) for more images. Overall 4 images are available for ABIN2778220.