



Datasheet for ABIN2778221
anti-RUNX1T1 antibody (Middle Region)



[Go to Product page](#)

2 Images

Overview

| | |
|----------------------|---|
| Quantity: | 100 µL |
| Target: | RUNX1T1 |
| Binding Specificity: | Middle Region |
| Reactivity: | Human, Mouse, Rat, Dog, Zebrafish (Danio rerio), Rabbit, Guinea Pig, Horse, Cow |
| Host: | Rabbit |
| Clonality: | Polyclonal |
| Conjugate: | This RUNX1T1 antibody is un-conjugated |
| Application: | Western Blotting (WB) |

Product Details

| | |
|-----------------------|---|
| Immunogen: | The immunogen is a synthetic peptide directed towards the middle region of human RUNX1T1 |
| Sequence: | LHSEHPSKRP CTISPGQRYSPNNGLSYQPN GLPHPTPPPP QHYRLDDMAI |
| Predicted Reactivity: | Cow: 100%, Dog: 100%, Guinea Pig: 100%, Horse: 100%, Human: 100%, Mouse: 100%, Rabbit: 100%, Rat: 100%, Zebrafish: 100% |
| Characteristics: | This is a rabbit polyclonal antibody against RUNX1T1. It was validated on Western Blot using a cell lysate as a positive control. |
| Purification: | Protein A purified |

Target Details

| | |
|---------|---------|
| Target: | RUNX1T1 |
|---------|---------|

Target Details

| | |
|-------------------|---|
| Alternative Name: | RUNX1T1 (RUNX1T1 Products) |
| Background: | <p>RUNX1T1 is a putative zinc finger transcription factor and oncoprotein. In acute myeloid leukemia, especially in the M2 subtype, the t(8,21)(q22,q22) translocation is one of the most frequent karyotypic abnormalities. The translocation produces a chimeric gene made up of the 5'-region of the RUNX1 gene fused to the 3'-region of this gene. The chimeric protein is thought to associate with the nuclear corepressor/histone deacetylase complex to block hematopoietic differentiation.</p> <p>Alias Symbols: CDR, ETO, MTG8, AML1T1, ZMYND2, CBFA2T1</p> <p>Protein Interaction Partner: EPS8, NECAB2, ABI3, GSE1, MID2, SPRY2, HOMER3, LPXN, ZMYM4, STX11, MEOX2, CCDC36, TRIM42, SPERT, CREB3L1, LZTS2, EFHC2, CPSF7, C19orf57, PRDM14, CBFA2T2, NCOR1, UBQLN4, ATN1, BCL6, ETS1, RUNX1, DNMT1, SPEN, RBPJ, UBE2E2, UBC, TRIM33, HDAC1, NCOR2, SIN3A,</p> <p>Protein Size: 604</p> |
| Molecular Weight: | 68 kDa |
| Gene ID: | 862 |
| NCBI Accession: | NM_175636, NP_783554 |
| UniProt: | Q06455 |

Application Details

| | |
|--------------------|--|
| Application Notes: | Optimal working dilutions should be determined experimentally by the investigator. |
| Comment: | Antigen size: 567 AA |
| Restrictions: | For Research Use only |

Handling

| | |
|--------------------|--|
| Format: | Liquid |
| Concentration: | Lot specific |
| Buffer: | Liquid. Purified antibody supplied in 1x PBS buffer with 0.09 % (w/v) sodium azide and 2 % sucrose. |
| Preservative: | Sodium azide |
| Precaution of Use: | This product contains Sodium azide: a POISONOUS AND HAZARDOUS SUBSTANCE which should be handled by trained staff only. |

Handling

Handling Advice: Avoid repeated freeze-thaw cycles.

Storage: -20 °C

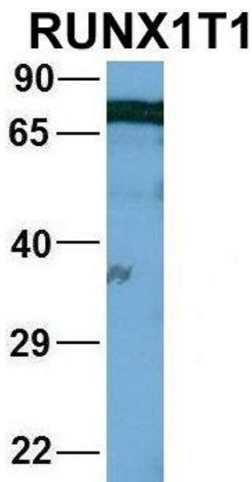
Storage Comment: For short term use, store at 2-8°C up to 1 week. For long term storage, store at -20°C in small aliquots to prevent freeze-thaw cycles.

Images



Western Blotting

Image 1. WB Suggested Anti-RUNX1T1 Antibody Titration: 1.25ug/ml Positive Control: HepG2 cell lysate There is BioGPS gene expression data showing that RUNX1T1 is expressed in HepG2



Western Blotting

Image 2. Host: Rabbit Target Name: WT1 Sample Type: 721_B Antibody Dilution: 1.0ug/ml RUNX1T1 is supported by BioGPS gene expression data to be expressed in 721_B