

Datasheet for ABIN2778224
anti-BHLHE40 antibody (Middle Region)[Go to Product page](#)

4 Images

Overview

Quantity:	100 µL
Target:	BHLHE40
Binding Specificity:	Middle Region
Reactivity:	Human, Mouse, Rat, Cow, Sheep, Guinea Pig, Horse, Dog, Rabbit
Host:	Rabbit
Clonality:	Polyclonal
Conjugate:	This BHLHE40 antibody is un-conjugated
Application:	Western Blotting (WB), Immunohistochemistry (IHC)

Product Details

Immunogen:	The immunogen is a synthetic peptide directed towards the middle region of human BHLHB2
Sequence:	SEKGDLRSEQ PCFKSDHGRR FTMGERIGAI KQESEEPPTK KNRMQLSDDE
Predicted Reactivity:	Cow: 92%, Dog: 93%, Guinea Pig: 100%, Horse: 100%, Human: 100%, Mouse: 100%, Rabbit: 86%, Rat: 100%, Sheep: 92%
Characteristics:	This is a rabbit polyclonal antibody against BHLHB2. It was validated on Western Blot using a cell lysate as a positive control.
Purification:	Affinity Purified

Target Details

Target:	BHLHE40
---------	---------

Target Details

Alternative Name: BHLHB2 ([BHLHE40 Products](#))

Background: BHLHB2 is a basic helix-loop-helix protein expressed in various tissues. Expression in the chondrocytes is responsive to the addition of Bt2cAMP. Differentiated embryo chondrocyte expressed gene 1 is believed to be involved in the control of cell differentiation. DEC1 encodes a basic helix-loop-helix protein expressed in various tissues. Expression in the chondrocytes is responsive to the addition of Bt2cAMP. Differentiated embryo chondrocyte expressed gene 1 is believed to be involved in the control of cell differentiation. DEC1 encodes a basic helix-loop-helix protein expressed in various tissues. Expression in the chondrocytes is responsive to the addition of Bt2cAMP. Differentiated embryo chondrocyte expressed gene 1 is believed to be involved in the control of cell differentiation. Publication Note: This RefSeq record includes a subset of the publications that are available for this gene. Please see the Entrez Gene record to access additional publications.

Alias Symbols: DEC1, SHARP-2, STRA13, Stra14, HLHB2, BHLHB2

Protein Interaction Partner: SOX15, PRKAA1, PDE6G, EHHADH, DAB1, COX5B, AES, AANAT, AAMP, USP17L9P, KRTAP23-1, SMYD1, CDPF1, LARP4, NAA50, NOC4L, TTC23, GMCL1P1, RHOJ, VAC14, RBM23, PLEKHB2, TXNL4B, USP21, FBXW11, RHOBTB3, RBPMS, TOB2, MAGED1, BTRC, STK19, CCNK, BHLHE40, UBC, RBFOX1,

Protein Size: 412

Molecular Weight: 45 kDa

Gene ID: 8553

NCBI Accession: [NM_003670](#), [NP_003661](#)

UniProt: [O14503](#)

Pathways: [Photoperiodism](#)

Application Details

Application Notes: Optimal working dilutions should be determined experimentally by the investigator.

Comment: Antigen size: 412 AA

Restrictions: For Research Use only

Handling

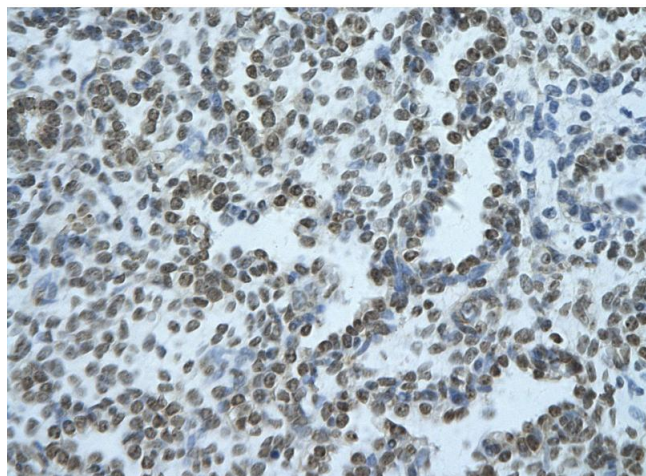
Format: Liquid

Concentration: Lot specific

Handling

Buffer:	Liquid. Purified antibody supplied in 1x PBS buffer with 0.09 % (w/v) sodium azide and 2 % sucrose.
Preservative:	Sodium azide
Precaution of Use:	This product contains Sodium azide: a POISONOUS AND HAZARDOUS SUBSTANCE which should be handled by trained staff only.
Handling Advice:	Avoid repeated freeze-thaw cycles.
Storage:	-20 °C
Storage Comment:	For short term use, store at 2-8°C up to 1 week. For long term storage, store at -20°C in small aliquots to prevent freeze-thaw cycles.

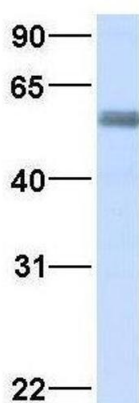
Images



Immunohistochemistry

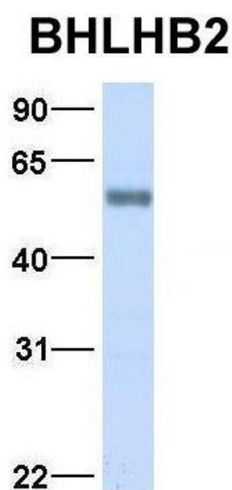
Image 1. Rabbit Anti-BHLHE40 Antibody Paraffin Embedded
Tissue: Human alveolar cell Cellular Data: Epithelial cells of renal tubule Antibody Concentration: 4.0-8.0 ug/ml
Magnification: 400X

BHLHB2



Western Blotting

Image 2. Host: Rabbit Target Name: BHLHB2 Sample Type: Human Adult Placenta Antibody Dilution: 1.0ug/ml



Western Blotting

Image 3. Host: Rabbit Target Name: BHLHB2 Sample Type:
Human Fetal Lung Antibody Dilution: 1.0ug/ml

Please check the [product details page](#) for more images. Overall 4 images are available for ABIN2778224.