



[Go to Product page](#)

Datasheet for ABIN2778233

anti-RGS16 antibody (C-Term)

1 Image

1 Publication

Overview

Quantity:	100 µL
Target:	RGS16
Binding Specificity:	C-Term
Reactivity:	Human, Mouse, Rat, Dog, Pig, Cow, Horse
Host:	Rabbit
Clonality:	Polyclonal
Conjugate:	This RGS16 antibody is un-conjugated
Application:	Western Blotting (WB)

Product Details

Immunogen:	The immunogen is a synthetic peptide directed towards the C terminal region of human RGS16
Sequence:	DAAQGKTRTL MEKDSYPRFL KSPAYRDLAA QASAASATLS SCSDLDEPSHT
Predicted Reactivity:	Cow: 92%, Dog: 100%, Horse: 92%, Human: 100%, Mouse: 100%, Pig: 100%, Rat: 100%
Characteristics:	This is a rabbit polyclonal antibody against RGS16. It was validated on Western Blot using a cell lysate as a positive control.
Purification:	Protein A purified

Target Details

Target:	RGS16
Alternative Name:	RGS16 (RGS16 Products)

Target Details

Background:	<p>RGS16 belongs to the 'regulator of G protein signaling' family. It inhibits signal transduction by increasing the GTPase activity of G protein alpha subunits. It also may play a role in regulating the kinetics of signaling in the phototransduction cascade.</p> <p>Alias Symbols: RGS-R, A28-RGS14, A28-RGS14P</p> <p>Protein Interaction Partner: SRC, LYN, CSK, CREB3L2, ST14, GDE1, GNAT1, GNA13, GNAQ, GNAI3, GNAI2, GNAO1, GNAI1, EGFR,</p> <p>Protein Size: 202</p>
Molecular Weight:	23 kDa
Gene ID:	6004
NCBI Accession:	NM_002928 , NP_002919
UniProt:	Q5VYN9
Pathways:	Myometrial Relaxation and Contraction , Regulation of G-Protein Coupled Receptor Protein Signaling

Application Details

Application Notes:	Optimal working dilutions should be determined experimentally by the investigator.
Comment:	Antigen size: 202 AA
Restrictions:	For Research Use only

Handling

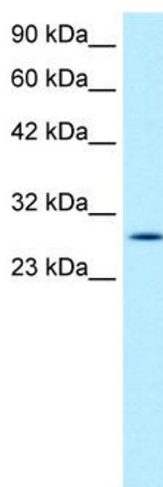
Format:	Liquid
Concentration:	Lot specific
Buffer:	Liquid. Purified antibody supplied in 1x PBS buffer with 0.09 % (w/v) sodium azide and 2 % sucrose.
Preservative:	Sodium azide
Precaution of Use:	This product contains Sodium azide: a POISONOUS AND HAZARDOUS SUBSTANCE which should be handled by trained staff only.
Handling Advice:	Avoid repeated freeze-thaw cycles.
Storage:	-20 °C
Storage Comment:	For short term use, store at 2-8°C up to 1 week. For long term storage, store at -20°C in small

aliquots to prevent freeze-thaw cycles.

Publications

Product cited in: Timmusk, Merlot, Lövgren, Järvekülg, Berg, Fossum: "Regulator of G protein signalling 16 is a target for a porcine circovirus type 2 protein." in: **The Journal of general virology**, Vol. 90, Issue Pt 10, pp. 2425-36, (2009) ([PubMed](#)).

Images



Western Blotting

Image 1. WB Suggested Anti-RGS16 Antibody Titration:
1.0ug/ml Positive Control: Jurkat cell lysate