

Datasheet for ABIN2778237

anti-RGS14 antibody (Middle Region)[Go to Product page](#)**1** Image

Overview

Quantity:	100 µL
Target:	RGS14
Binding Specificity:	Middle Region
Reactivity:	Human, Mouse, Rat, Cow, Guinea Pig, Rabbit, Dog
Host:	Rabbit
Clonality:	Polyclonal
Conjugate:	This RGS14 antibody is un-conjugated
Application:	Western Blotting (WB)

Product Details

Immunogen:	The immunogen is a synthetic peptide directed towards the middle region of Mouse Rgs14
Sequence:	LGSPDTARKK PKLKPGKSLP LGVEELGQLP LAEGPCGRPL RKSFRREMTG
Predicted Reactivity:	Cow: 92%, Dog: 92%, Guinea Pig: 93%, Human: 100%, Mouse: 86%, Rabbit: 93%, Rat: 100%
Characteristics:	This is a rabbit polyclonal antibody against Rgs14. It was validated on Western Blot.
Purification:	Affinity Purified

Target Details

Target:	RGS14
Alternative Name:	Rgs14 (RGS14 Products)
Background:	Rgs14 acts as a regulator of G protein signaling (RGS). It modulates G protein alpha subunits

Target Details

nucleotide exchange and hydrolysis activities by functioning either as a GTPase-activating protein (GAP), thereby driving G protein alpha subunits into their inactive GDP-bound form, or as a GDP-dissociation inhibitor (GDI).

Alias Symbols: -

Protein Interaction Partner: Rufy3,

Protein Size: 547

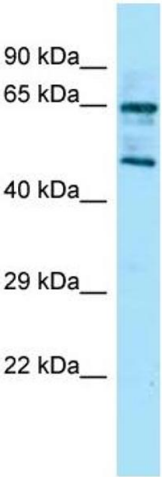
Molecular Weight:	60 kDa
Gene ID:	51791
NCBI Accession:	NM_016758 , NP_058038
UniProt:	P97492
Pathways:	Myometrial Relaxation and Contraction , Regulation of G-Protein Coupled Receptor Protein Signaling , Platelet-derived growth Factor Receptor Signaling

Application Details

Application Notes:	Optimal working dilutions should be determined experimentally by the investigator.
Comment:	Antigen size: 547 AA
Restrictions:	For Research Use only

Handling

Format:	Liquid
Concentration:	Lot specific
Buffer:	Liquid. Purified antibody supplied in 1x PBS buffer with 0.09 % (w/v) sodium azide and 2 % sucrose.
Preservative:	Sodium azide
Precaution of Use:	This product contains Sodium azide: a POISONOUS AND HAZARDOUS SUBSTANCE which should be handled by trained staff only.
Handling Advice:	Avoid repeated freeze-thaw cycles.
Storage:	-20 °C
Storage Comment:	For short term use, store at 2-8°C up to 1 week. For long term storage, store at -20°C in small aliquots to prevent freeze-thaw cycles.



Western Blotting

Image 1. Host: Rabbit Target Name: Rgs14 Sample Type: Mouse Stomach lysates Antibody Dilution: 1.0ug/ml