

Datasheet for ABIN2778240
anti-RGS13 antibody (Middle Region)[Go to Product page](#)

2 Images

Overview

Quantity:	100 µL
Target:	RGS13
Binding Specificity:	Middle Region
Reactivity:	Human, Rat, Mouse, Dog, Cow, Rabbit, Horse
Host:	Rabbit
Clonality:	Polyclonal
Conjugate:	This RGS13 antibody is un-conjugated
Application:	Western Blotting (WB), Immunohistochemistry (IHC)

Product Details

Immunogen:	The immunogen is a synthetic peptide directed towards the middle region of human RGS13
Sequence:	WSRISRAKKL YKIYIQPQSP REINIDSSTR ETIIRNIQEP TETCFEEAQK
Predicted Reactivity:	Cow: 100%, Dog: 100%, Horse: 92%, Human: 100%, Mouse: 93%, Rabbit: 93%, Rat: 100%
Characteristics:	This is a rabbit polyclonal antibody against RGS13. It was validated on Western Blot and immunohistochemistry.
Purification:	Protein A purified

Target Details

Target:	RGS13
Alternative Name:	RGS13 (RGS13 Products)

Target Details

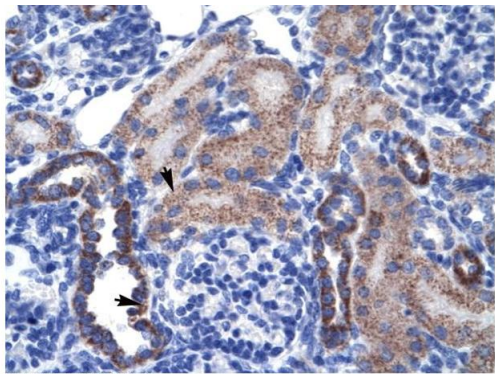
Background:	<p>RGS13 encodes a protein which is a member of the regulator of G protein signaling (RGS) family. RGS proteins accelerate GTPase activity of G protein alpha-subunits, thereby driving G protein into their inactive GDP-bound form, thus negatively regulating G protein signaling. RGS proteins have been implicated in the fine tuning of a variety of cellular events in response to G protein-coupled receptor activation.</p> <p>Protein Interaction Partner: GNAI2, GNA11, UBC, PRKACA, CREB1, GNAQ,</p> <p>Protein Size: 159</p>
Molecular Weight:	19 kDa
Gene ID:	6003
NCBI Accession:	NM_002927 , NP_002918
UniProt:	O14921
Pathways:	Regulation of G-Protein Coupled Receptor Protein Signaling

Application Details

Application Notes:	Optimal working dilutions should be determined experimentally by the investigator.
Comment:	Antigen size: 159 AA
Restrictions:	For Research Use only

Handling

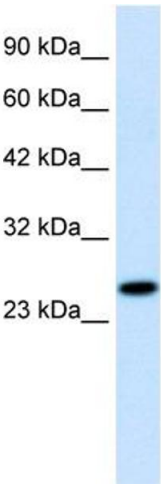
Format:	Liquid
Concentration:	Lot specific
Buffer:	Liquid. Purified antibody supplied in 1x PBS buffer with 0.09 % (w/v) sodium azide and 2 % sucrose.
Preservative:	Sodium azide
Precaution of Use:	This product contains Sodium azide: a POISONOUS AND HAZARDOUS SUBSTANCE which should be handled by trained staff only.
Handling Advice:	Avoid repeated freeze-thaw cycles.
Storage:	-20 °C
Storage Comment:	For short term use, store at 2-8°C up to 1 week. For long term storage, store at -20°C in small aliquots to prevent freeze-thaw cycles.



Rabbit Anti-RGS13 Antibody
Catalog Number: ARP34051
Lot Number: QC3472
Paraffin Embedded Tissue: Human Kidney
Cells with Positive label: Epithelial cells of renal tubule (Indicated with Arrows)
Antibody Concentration: 4.0-8.0 µg/ml
Magnification: 400X

Immunohistochemistry

Image 1. Human kidney



Western Blotting

Image 2. WB Suggested Anti-RGS13 Antibody Titration:
1.25ug/ml Positive Control: Daudi cell lysate RGS13 is supported by BioGPS gene expression data to be expressed in Daudi