

Datasheet for ABIN2778245

## anti-SUPT5H antibody (Middle Region)



[Go to Product page](#)

1 Image

2 Publications

### Overview

Quantity:	100 µL
Target:	SUPT5H
Binding Specificity:	Middle Region
Reactivity:	Human, Mouse, Dog, Cow, Rat, Rabbit, Horse, Guinea Pig, Zebrafish (Danio rerio)
Host:	Rabbit
Clonality:	Polyclonal
Conjugate:	This SUPT5H antibody is un-conjugated
Application:	Western Blotting (WB)

### Product Details

Immunogen:	The immunogen is a synthetic peptide directed towards the middle region of human SUPT5H
Sequence:	FEDQPEGIDL EVVTESTGKE REHNFQPGDN VEVCEGELIN LQGKILSVDG
Predicted Reactivity:	Cow: 100%, Dog: 100%, Guinea Pig: 100%, Horse: 100%, Human: 100%, Mouse: 100%, Rabbit: 100%, Rat: 100%, Zebrafish: 93%
Characteristics:	This is a rabbit polyclonal antibody against SUPT5H. It was validated on Western Blot using a cell lysate as a positive control.
Purification:	Affinity Purified

### Target Details

Target:	SUPT5H
---------	--------

## Target Details

Alternative Name:	SUPT5H ( <a href="#">SUPT5H Products</a> )
Background:	<p>SUPT5H and its binding partner regulate transcriptional elongation by RNA polymerase II. SPT4 and SPT5 are involved in both 5,6-dichloro-1-beta-D-ribofuranosylbenzimidazole (DRB)-mediated transcriptional inhibition and the activation of transcriptional elongation by the human immunodeficiency virus type 1 (HIV-1) Tat protein.</p> <p>Alias Symbols: FLJ34157, SPT5, SPT5H, Tat-CT1</p> <p>Protein Interaction Partner: POLR2A, BRCA1, UBC, RNF2, SAMHD1, GANAB, SWAP70, PAICS, CARM1, FARSF, SEC24C, RANBP3, CSDE1, SF1, SET, PLOD2, MSH2, MSH6, GART, XRCC6, ATP6V1B2, SOX2, LMNA, CDK9, CCNT2, CCNT1, tat, NSMF, FN1, CSNK2A1, SIK1, ZNF512B, LMAN2, ZFYVE9, SNX4, SUPT4H1, POLR2C,</p> <p>Protein Size: 1087</p>
Molecular Weight:	121 kDa
Gene ID:	6829
NCBI Accession:	<a href="#">NM_003169</a> , <a href="#">NP_003160</a>
UniProt:	<a href="#">O00267</a>

## Application Details

Application Notes:	Optimal working dilutions should be determined experimentally by the investigator.
Comment:	Antigen size: 1087 AA
Restrictions:	For Research Use only

## Handling

Format:	Liquid
Concentration:	Lot specific
Buffer:	Liquid. Purified antibody supplied in 1x PBS buffer with 0.09 % (w/v) sodium azide and 2 % sucrose.
Preservative:	Sodium azide
Precaution of Use:	This product contains Sodium azide: a POISONOUS AND HAZARDOUS SUBSTANCE which should be handled by trained staff only.
Handling Advice:	Avoid repeated freeze-thaw cycles.

## Handling

Storage: -20 °C

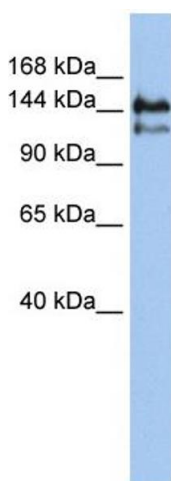
Storage Comment: For short term use, store at 2-8°C up to 1 week. For long term storage, store at -20°C in small aliquots to prevent freeze-thaw cycles.

## Publications

Product cited in: Wang, Mueller, Hertel, Cambi: "G Run-mediated recognition of proteolipid protein and DM20 5' splice sites by U1 small nuclear RNA is regulated by context and proximity to the splice site." in: **The Journal of biological chemistry**, Vol. 286, Issue 6, pp. 4059-71, (2011) ([PubMed](#)).

Wang, Cambi: "Heterogeneous nuclear ribonucleoproteins H and F regulate the proteolipid protein/DM20 ratio by recruiting U1 small nuclear ribonucleoprotein through a complex array of G runs." in: **The Journal of biological chemistry**, Vol. 284, Issue 17, pp. 11194-204, (2009) ([PubMed](#)).

## Images



### Western Blotting

**Image 1.** WB Suggested Anti-SUPT5H Antibody Titration: 0.2-1 ug/ml ELISA Titer: 1:1562500 Positive Control: Jurkat cell lysate