

Datasheet for ABIN2778249

anti-VPS72 antibody (Middle Region)



[Go to Product page](#)

1 Image

Overview

Quantity:	100 µL
Target:	VPS72
Binding Specificity:	Middle Region
Reactivity:	Human, Mouse, Rat, Cow, Dog, Rabbit, Horse, Guinea Pig, Zebrafish (Danio rerio)
Host:	Rabbit
Clonality:	Polyclonal
Conjugate:	This VPS72 antibody is un-conjugated
Application:	Western Blotting (WB)

Product Details

Immunogen:	The immunogen is a synthetic peptide directed towards the middle region of human TCFL1
Sequence:	TEELNLRSL E TYERLEADKK KQVHKRKCP GPIITYHSVT VPLVGEPGPK
Predicted Reactivity:	Cow: 100%, Dog: 100%, Guinea Pig: 100%, Horse: 100%, Human: 100%, Mouse: 100%, Rabbit: 100%, Rat: 100%, Zebrafish: 92%
Characteristics:	This is a rabbit polyclonal antibody against TCFL1. It was validated on Western Blot using a cell lysate as a positive control.
Purification:	Affinity Purified

Target Details

Target:	VPS72
---------	-------

Target Details

Alternative Name:	TCFL1 (VPS72 Products)
Background:	<p>TCFL1 encodes the YL-1 protein which is a subunit of the TRRAP/TIP60 HAT complex, and also is a component of a novel mammalian multiprotein complex that includes the SNF2-related helicase SRCAP.</p> <p>Alias Symbols: YL1, CFL1, Swc2, YL-1, TCFL1</p> <p>Protein Interaction Partner: HMBOX1, MDFI, UBC, PRMT1, ZFC3H1, DMAP1, RUVBL2, SRCAP, RUVBL1, H2AFZ, ELAVL1, CEBPA, SUMO2, KAT5, MRGBP, CCDC85B, CALCOCO2, EWSR1,</p> <p>Protein Size: 364</p>
Molecular Weight:	41 kDa
Gene ID:	6944
NCBI Accession:	NM_005997 , NP_005988
UniProt:	Q15906
Pathways:	Stem Cell Maintenance

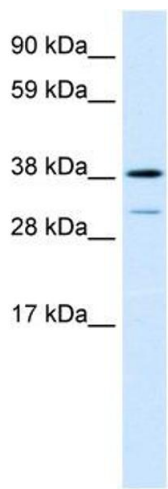
Application Details

Application Notes:	Optimal working dilutions should be determined experimentally by the investigator.
Comment:	Antigen size: 364 AA
Restrictions:	For Research Use only

Handling

Format:	Liquid
Concentration:	Lot specific
Buffer:	Liquid. Purified antibody supplied in 1x PBS buffer with 0.09 % (w/v) sodium azide and 2 % sucrose.
Preservative:	Sodium azide
Precaution of Use:	This product contains Sodium azide: a POISONOUS AND HAZARDOUS SUBSTANCE which should be handled by trained staff only.
Handling Advice:	Avoid repeated freeze-thaw cycles.
Storage:	-20 °C
Storage Comment:	For short term use, store at 2-8°C up to 1 week. For long term storage, store at -20°C in small

aliquots to prevent freeze-thaw cycles.



Western Blotting

Image 1. WB Suggested Anti-TCFL1 Antibody Titration:
0.06ug/ml Positive Control: Human Lung