

Datasheet for ABIN2778254  
**anti-KIF2B antibody (Middle Region)**[Go to Product page](#)**1** Image**1** Publication

## Overview

Quantity:	100 µL
Target:	KIF2B
Binding Specificity:	Middle Region
Reactivity:	Human, Mouse, Rat, Rabbit, Dog, Guinea Pig, Horse, Cow, Zebrafish (Danio rerio)
Host:	Rabbit
Clonality:	Polyclonal
Conjugate:	This KIF2B antibody is un-conjugated
Application:	Western Blotting (WB)

## Product Details

Immunogen:	The immunogen is a synthetic peptide directed towards the middle region of human KIF2B
Sequence:	DCSKGIYALV AQDVFLLLRN STYEKLDLKV YGTFFEIYGG KVDLLNWKK
Predicted Reactivity:	Cow: 93%, Dog: 100%, Guinea Pig: 100%, Horse: 93%, Human: 100%, Mouse: 93%, Rabbit: 100%, Rat: 93%, Zebrafish: 85%
Characteristics:	This is a rabbit polyclonal antibody against KIF2B. It was validated on Western Blot using a cell lysate as a positive control.
Purification:	Affinity Purified

## Target Details

Target:	KIF2B
---------	-------

## Target Details

Alternative Name:	KIF2B ( <a href="#">KIF2B Products</a> )
Background:	<p>KIF2B is the plus end-directed microtubule-dependent motor required for spindle assembly and chromosome movement. KIF2B has microtubule depolymerization activity.</p> <p>Alias Symbols: -</p> <p>Protein Interaction Partner: STAU1,</p> <p>Protein Size: 673</p>
Molecular Weight:	76 kDa
Gene ID:	84643
NCBI Accession:	<a href="#">NM_032559</a> , <a href="#">NP_115948</a>
UniProt:	<a href="#">Q8N4N8</a>
Pathways:	<a href="#">Microtubule Dynamics</a>

## Application Details

Application Notes:	Optimal working dilutions should be determined experimentally by the investigator.
Comment:	Antigen size: 673 AA
Restrictions:	For Research Use only

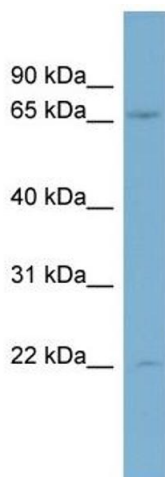
## Handling

Format:	Liquid
Concentration:	Lot specific
Buffer:	Liquid. Purified antibody supplied in 1x PBS buffer with 0.09 % (w/v) sodium azide and 2 % sucrose.
Preservative:	Sodium azide
Precaution of Use:	This product contains Sodium azide: a POISONOUS AND HAZARDOUS SUBSTANCE which should be handled by trained staff only.
Handling Advice:	Avoid repeated freeze-thaw cycles.
Storage:	-20 °C
Storage Comment:	For short term use, store at 2-8°C up to 1 week. For long term storage, store at -20°C in small aliquots to prevent freeze-thaw cycles.

## Publications

- Product cited in: Wang, Mueller, Hertel, Cambi: "G Run-mediated recognition of proteolipid protein and DM20 5' splice sites by U1 small nuclear RNA is regulated by context and proximity to the splice site." in: **The Journal of biological chemistry**, Vol. 286, Issue 6, pp. 4059-71, (2011) ([PubMed](#)).
- Wang, Cambi: "Heterogeneous nuclear ribonucleoproteins H and F regulate the proteolipid protein/DM20 ratio by recruiting U1 small nuclear ribonucleoprotein through a complex array of G runs." in: **The Journal of biological chemistry**, Vol. 284, Issue 17, pp. 11194-204, (2009) ([PubMed](#)).

## Images



### Western Blotting

**Image 1.** WB Suggested Anti-KIF2B Antibody Titration: 0.2-1 ug/ml ELISA Titer: 1:312500 Positive Control: Human Thymus