

Datasheet for ABIN2778256  
**anti-PARP6 antibody (C-Term)**



[Go to Product page](#)

3 Images

1 Publication

### Overview

Quantity:	100 µL
Target:	PARP6
Binding Specificity:	C-Term
Reactivity:	Human, Mouse, Rat, Dog, Cow, Guinea Pig, Horse, Rabbit, Zebrafish (Danio rerio)
Host:	Rabbit
Clonality:	Polyclonal
Conjugate:	This PARP6 antibody is un-conjugated
Application:	Western Blotting (WB), Immunohistochemistry (IHC)

### Product Details

Immunogen:	The immunogen is a synthetic peptide directed towards the C terminal region of human PARP6
Sequence:	KLPLSRLKFM HTSHQFLLLS SPPAKEARFR TAKKLYGSTF AFHGSHIENW
Predicted Reactivity:	Cow: 100%, Dog: 100%, Guinea Pig: 100%, Horse: 100%, Human: 100%, Mouse: 100%, Rabbit: 100%, Rat: 100%, Zebrafish: 100%
Characteristics:	This is a rabbit polyclonal antibody against PARP6. It was validated on Western Blot and immunohistochemistry.
Purification:	Affinity Purified

### Target Details

Target:	PARP6
---------	-------

## Target Details

---

Alternative Name:	PARP6 ( <a href="#">PARP6 Products</a> )
Background:	<p>Poly(ADP-ribose) polymerases (PARPs) constitute a large family of 18 proteins, encoded by different genes and displaying a conserved catalytic domain. They are involved in DNA-damage-dependent post-translational modification of histones and other nuclear proteins that contributes to the survival of injured proliferating cells.</p> <p>Alias Symbols: MGC131971, pART17</p> <p>Protein Interaction Partner: UBA5, ANKMY2, NSFL1C, RPRD1A, ARIH2, PLIN3, PLAA, SURF2, HK1, CBS,</p> <p>Protein Size: 519</p>
Molecular Weight:	59 kDa
Gene ID:	56965
NCBI Accession:	<a href="#">NM_020214</a> , <a href="#">NP_064599</a>
UniProt:	<a href="#">Q2NL67</a>

## Application Details

---

Application Notes:	Optimal working dilutions should be determined experimentally by the investigator.
Comment:	Antigen size: 519 AA
Restrictions:	For Research Use only

## Handling

---

Format:	Liquid
Concentration:	Lot specific
Buffer:	Liquid. Purified antibody supplied in 1x PBS buffer with 0.09 % (w/v) sodium azide and 2 % sucrose.
Preservative:	Sodium azide
Precaution of Use:	This product contains Sodium azide: a POISONOUS AND HAZARDOUS SUBSTANCE which should be handled by trained staff only.
Handling Advice:	Avoid repeated freeze-thaw cycles.
Storage:	-20 °C
Storage Comment:	For short term use, store at 2-8°C up to 1 week. For long term storage, store at -20°C in small

aliquots to prevent freeze-thaw cycles.

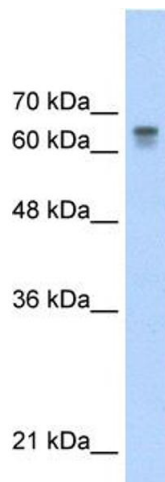
## Publications

Product cited in:

Wang, Mueller, Hertel, Cambi: "G Run-mediated recognition of proteolipid protein and DM20 5' splice sites by U1 small nuclear RNA is regulated by context and proximity to the splice site." in: **The Journal of biological chemistry**, Vol. 286, Issue 6, pp. 4059-71, (2011) ([PubMed](#)).

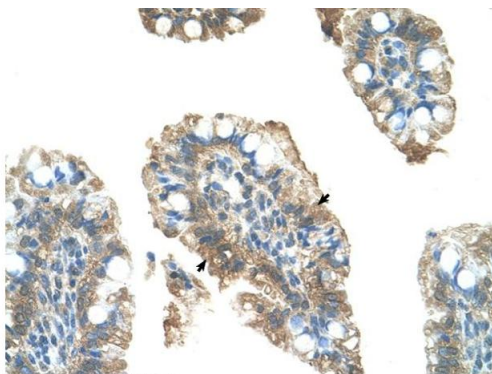
Wang, Cambi: "Heterogeneous nuclear ribonucleoproteins H and F regulate the proteolipid protein/DM20 ratio by recruiting U1 small nuclear ribonucleoprotein through a complex array of G runs." in: **The Journal of biological chemistry**, Vol. 284, Issue 17, pp. 11194-204, (2009) ([PubMed](#)).

## Images



### Western Blotting

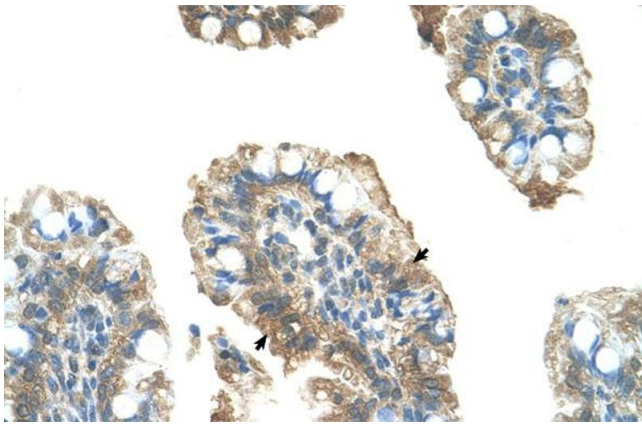
**Image 1.** WB Suggested Anti-PAntibody Titration: 0.2-1 ug/ml Positive Control: HepG2 cell lysate



### Immunohistochemistry

**Image 2.** Human Intestine

Rabbit Anti-PARP6 Antibody  
Catalog Number: ARP34087  
Lot Number: QC11646  
Paraffin Embedded Tissue: Human Intestine  
Cells with Positive label: Epithelial cells of intestinal villus (Indicated with Arrows)  
Antibody Concentration: 4.0-8.0 µg/ml  
Magnification: 400X



**Immunohistochemistry**

**Image 3.** Human Intestine