

Datasheet for ABIN2778258
anti-UBE2N antibody (Middle Region)

4 Images

1 Publication

[Go to Product page](#)

Overview

Quantity:	100 µL
Target:	UBE2N
Binding Specificity:	Middle Region
Reactivity:	Human, Rat, Mouse, Zebrafish (Danio rerio), Dog, Cow, Sheep, Rabbit, Horse, Guinea Pig, Saccharomyces cerevisiae
Host:	Rabbit
Clonality:	Polyclonal
Application:	Western Blotting (WB), Immunohistochemistry (IHC)

Product Details

Immunogen:	The immunogen is a synthetic peptide directed towards the middle region of human UBE2N
Sequence:	VDKLGRICLD ILKDKWSPAL QIRTVLLSIQ ALLSAPNPDD PLANDVAEQW
Predicted Reactivity:	Cow: 100%, Dog: 100%, Guinea Pig: 100%, Horse: 100%, Human: 100%, Mouse: 100%, Rabbit: 100%, Rat: 100%, Sheep: 100%, Yeast: 100%, Zebrafish: 100%
Characteristics:	This is a rabbit polyclonal antibody against UBE2N. It was validated on Western Blot using a cell lysate as a positive control.
Purification:	Protein A purified

Target Details

Target:	UBE2N
Alternative Name:	UBE2N (UBE2N Products)

Target Details

Background:	<p>UBE2N encodes a member of the E2 ubiquitin-conjugating enzyme family. The modification of proteins with ubiquitin is an important cellular mechanism for targeting abnormal or short-lived proteins for degradation. Ubiquitination involves at least three classes of enzymes: ubiquitin-activating enzymes, or E1s, ubiquitin-conjugating enzymes, or E2s, and ubiquitin-protein ligases, or E3s. Studies in mouse suggest that this protein plays a role in DNA postreplication repair.</p> <p>Alias Symbols: UBC13, Ubch-ben</p> <p>Protein Interaction Partner: TRIM33, BFAR, MALT1, STUB1, BCL10, UBE2V2, UBC, TRAF6, ZNRF1, XIAP, SLX8, SLX5, MARCH7, TNF, UBE2N, RNF168, RNF8, PARK2, OTUB1, ARIH1, NEDD4L, MFN2, TRIM72, PELI3, RNF111, RNF11, BAG3, TRAF2, FN1, VCAM1, RNF126, RNF115, NBN, ATP6V1H, VPS33B, ZDHHC5, ACTR2</p> <p>Protein Size: 152</p>
Molecular Weight:	17 kDa
Gene ID:	7334
NCBI Accession:	NM_003348 , NP_003339
UniProt:	P61088
Pathways:	TCR Signaling , Fc-epsilon Receptor Signaling Pathway , Activation of Innate immune Response , Toll-Like Receptors Cascades , Positive Regulation of Response to DNA Damage Stimulus , Ubiquitin Proteasome Pathway

Application Details

Application Notes:	Optimal working dilutions should be determined experimentally by the investigator.
Comment:	Antigen size: 152 AA
Restrictions:	For Research Use only

Handling

Format:	Liquid
Concentration:	Lot specific
Buffer:	Liquid. Purified antibody supplied in 1x PBS buffer with 0.09 % (w/v) sodium azide and 2 % sucrose.
Preservative:	Sodium azide
Precaution of Use:	This product contains Sodium azide: a POISONOUS AND HAZARDOUS SUBSTANCE which

Handling

	should be handled by trained staff only.
Handling Advice:	Avoid repeated freeze-thaw cycles.
Storage:	-20 °C
Storage Comment:	For short term use, store at 2-8°C up to 1 week. For long term storage, store at -20°C in small aliquots to prevent freeze-thaw cycles.

Publications

Product cited in:	Xu, Yan, Jovanovic, An, Cheng, Aakre, Yi, Eng, Link, Moses: "Quantitative analysis of the secretome of TGF-beta signaling-deficient mammary fibroblasts." in: Proteomics , Vol. 10, Issue 13, pp. 2458-70, (2010) (PubMed).
-------------------	--

Images



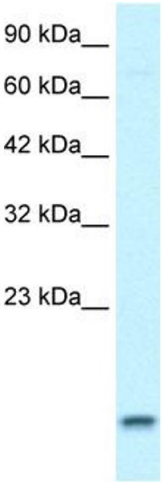
Western Blotting

Image 1. WB Suggested Anti-UBE2N

Antibody Titration: 1.25 µg/mL

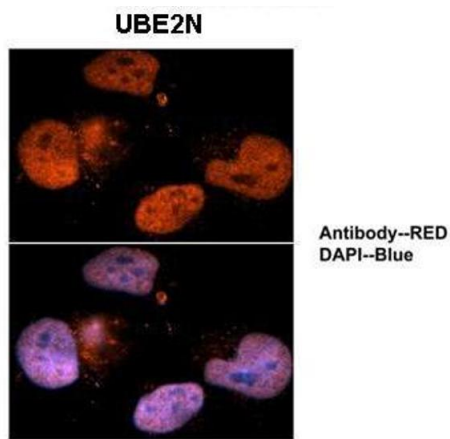
Positive Control: HepG2 cell lysate

UBE2N is strongly supported by BioGPS gene expression data to be expressed in Human HepG2 cells



Western Blotting

Image 2. WB Suggested Anti-UBE2N Antibody Titration: 1.25ug/ml Positive Control: HepG2 cell lysate UBE2N is strongly supported by BioGPS gene expression data to be expressed in Human HepG2 cells



See IHC 1 Data and Customer Feedback for more information

Immunohistochemistry

Image 3. Sample Type : Human brain stem cells Primary Antibody Dilution : 1:500 Secondary Antibody : Goat anti-rabbit Alexa-Fluor 594 Secondary Antibody Dilution : 1:1000 Color/Signal Descriptions : UBE2N: Red DAPI:Blue Gene Name : UBE2N Submitted by : Dr. Yuzhi Chen, University of Arkansas for Medical Science

Please check the [product details page](#) for more images. Overall 4 images are available for ABIN2778258.