

Datasheet for ABIN2778260
anti-NPM1 antibody (N-Term)[Go to Product page](#)

4 Images

2 Publications

Overview

Quantity:	100 µL
Target:	NPM1
Binding Specificity:	N-Term
Reactivity:	Human, Mouse, Rat, Rabbit, Cow, Dog, Pig, Horse, Guinea Pig
Host:	Rabbit
Clonality:	Polyclonal
Conjugate:	This NPM1 antibody is un-conjugated
Application:	Western Blotting (WB), Immunohistochemistry (IHC)

Product Details

Immunogen:	The immunogen is a synthetic peptide directed towards the N terminal region of human NPM1
Sequence:	DMDMSPLRPQ NYLFGCELKA DKDYHFKVDN DENEHQLSLR TVSLGAGAKD
Predicted Reactivity:	Cow: 93%, Dog: 100%, Guinea Pig: 77%, Horse: 100%, Human: 100%, Mouse: 100%, Pig: 100%, Rabbit: 100%, Rat: 100%
Characteristics:	This is a rabbit polyclonal antibody against NPM1. It was validated on Western Blot and immunohistochemistry.
Purification:	Protein A purified

Target Details

Target:	NPM1
---------	------

Target Details

Alternative Name:	NPM1 (NPM1 Products)
Background:	<p>NPM1 is a member of Nucleophosmin (NPM) family. NPM is a ubiquitously expressed nucleolar phosphoprotein that continuously shuttles between the nucleus and cytoplasm</p> <p>Alias Symbols: B23, NPM</p> <p>Protein Interaction Partner: COX8A, NPM2, HUWE1, UBC, PA2G4, FUS, TP53, AURKA, SUMO2, SUMO3, ELF4, STAU1, CDKN2A, LGR4, SUMO1, MDM2, RPA3, RPA2, RPA1, ERG, rev, TRMT61A, OSBP, KPNA1, LIMCH1, ARMCX3, YWHAQ, PARK2, TARDBP, TUBA1C, TAB2, CEP152, DZIP1, COPG1, STK38, COPE, PARK7, AKAP11,</p> <p>Protein Size: 294</p>
Molecular Weight:	33 kDa
Gene ID:	4869
NCBI Accession:	NM_002520 , NP_002511
UniProt:	P06748
Pathways:	Ribonucleoprotein Complex Subunit Organization , Ribosome Assembly

Application Details

Application Notes:	Optimal working dilutions should be determined experimentally by the investigator.
Comment:	Antigen size: 294 AA
Restrictions:	For Research Use only

Handling

Format:	Liquid
Concentration:	Lot specific
Buffer:	Liquid. Purified antibody supplied in 1x PBS buffer with 0.09 % (w/v) sodium azide and 2 % sucrose.
Preservative:	Sodium azide
Precaution of Use:	This product contains Sodium azide: a POISONOUS AND HAZARDOUS SUBSTANCE which should be handled by trained staff only.
Handling Advice:	Avoid repeated freeze-thaw cycles.
Storage:	-20 °C

Handling

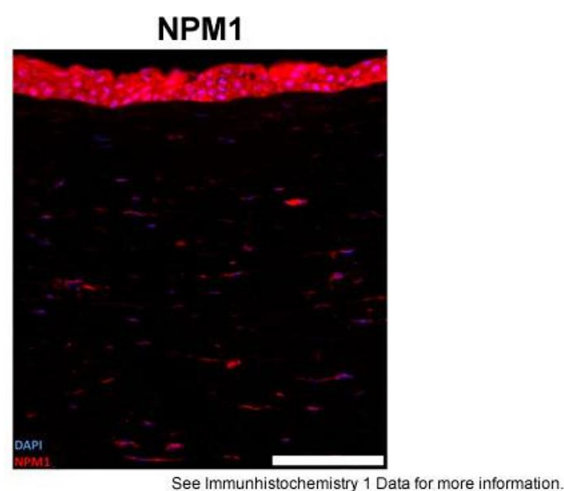
Storage Comment: For short term use, store at 2-8°C up to 1 week. For long term storage, store at -20°C in small aliquots to prevent freeze-thaw cycles.

Publications

Product cited in: Wang, Mueller, Hertel, Cambi: "G Run-mediated recognition of proteolipid protein and DM20 5' splice sites by U1 small nuclear RNA is regulated by context and proximity to the splice site." in: **The Journal of biological chemistry**, Vol. 286, Issue 6, pp. 4059-71, (2011) ([PubMed](#)).

Wang, Cambi: "Heterogeneous nuclear ribonucleoproteins H and F regulate the proteolipid protein/DM20 ratio by recruiting U1 small nuclear ribonucleoprotein through a complex array of G runs." in: **The Journal of biological chemistry**, Vol. 284, Issue 17, pp. 11194-204, (2009) ([PubMed](#)).

Images



Immunohistochemistry

Image 1. Sample Type: human cornea (frozen)

Blue: DAPI

Red: NPM1

Primary Dilution: 1:100

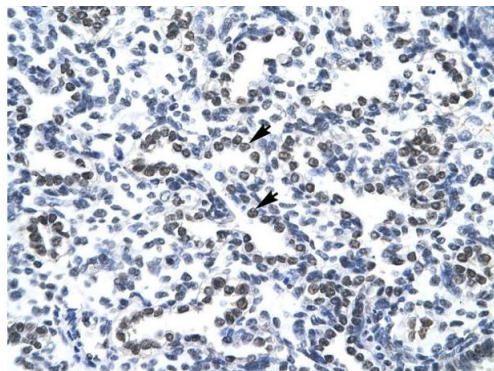
Image Submitted By: Geraint Parfitt

Gavin Herbert Eye Institute .



Western Blotting

Image 2. WB Suggested Anti-NPM1 Antibody Titration: 1.0ug/ml Positive Control: HepG2 cell lysate There is BioGPS gene expression data showing that NPM1 is expressed in HepG2



Rabbit Anti- NPM1 Antibody
Catalog Number: ARP34094
Lot Number: QC3442
Paraffin Embedded Tissue: Human Lung
Cells with Positive label: Alveolar cells (Indicated with Arrows)
Antibody Concentration: 4.0-8.0 µg/ml
Magnification: 400X

Immunohistochemistry

Image 3. Human Lung

Please check the [product details page](#) for more images. Overall 4 images are available for ABIN2778260.