

Datasheet for ABIN2778264
anti-PTGER3 antibody (C-Term)



[Go to Product page](#)

2 Images

Overview

Quantity:	100 µL
Target:	PTGER3
Binding Specificity:	C-Term
Reactivity:	Human, Horse, Rabbit
Host:	Rabbit
Clonality:	Polyclonal
Conjugate:	This PTGER3 antibody is un-conjugated
Application:	Western Blotting (WB)

Product Details

Immunogen:	The immunogen is a synthetic peptide directed towards the C terminal region of human PTGER3
Sequence:	LDPWVYLLLR KILLRKFCQI RYHTNNYASS STSLPCQCSS TLMWSDHLER
Predicted Reactivity:	Horse: 92%, Human: 100%, Rabbit: 100%
Characteristics:	This is a rabbit polyclonal antibody against PTGER3. It was validated on Western Blot using a cell lysate as a positive control.
Purification:	Protein A purified

Target Details

Target:	PTGER3
---------	--------

Target Details

Alternative Name:	PTGER3 (PTGER3 Products)
Background:	<p>PTGER3 is a member of the G-protein coupled receptor family. This protein is one of four receptors identified for prostaglandin E2 (PGE2). This receptor may have many biological functions, which involve digestion, nervous system, kidney reabsorption, and uterine contraction activities. Studies of the mouse counterpart suggest that this receptor may also mediate adrenocorticotrophic hormone response as well as fever generation in response to exogenous and endogenous stimuli.</p> <p>Alias Symbols: EP3, EP3e, EP3-I, EP3-II, EP3-IV, PGE2-R, EP3-III</p> <p>Protein Interaction Partner: NOTCH2NL, INCA1, KRTAP10-3, KRTAP10-8, KRTAP10-9, KRTAP10-7, TRIM42, MGAT5B, KRT40, CCDC33, ADAMTSL4, EFEMP2, RGS17, SPRY2, KRT38, RGS20, TCF4, REL, MEOX2, KRT31, CDA, GHRL, MKLN1, PTGER1,</p> <p>Protein Size: 390</p>
Molecular Weight:	43 kDa
Gene ID:	5733
NCBI Accession:	NM_198714 , NP_942007
UniProt:	P43115

Application Details

Application Notes:	Optimal working dilutions should be determined experimentally by the investigator.
Comment:	Antigen size: 390 AA
Restrictions:	For Research Use only

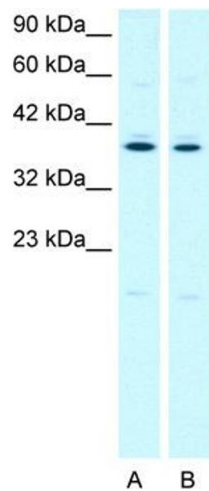
Handling

Format:	Liquid
Concentration:	Lot specific
Buffer:	Liquid. Purified antibody supplied in 1x PBS buffer with 0.09 % (w/v) sodium azide and 2 % sucrose.
Preservative:	Sodium azide
Precaution of Use:	This product contains Sodium azide: a POISONOUS AND HAZARDOUS SUBSTANCE which should be handled by trained staff only.
Handling Advice:	Avoid repeated freeze-thaw cycles.

Handling

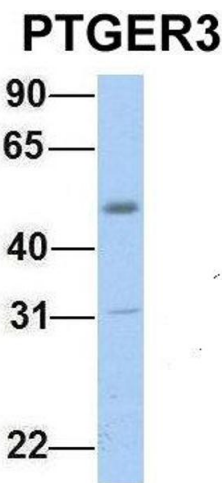
Storage:	-20 °C
Storage Comment:	For short term use, store at 2-8°C up to 1 week. For long term storage, store at -20°C in small aliquots to prevent freeze-thaw cycles.

Images



Western Blotting

Image 1. WB Suggested Anti-PTGER3 Antibody Titration:
2.4ug/ml Positive Control: Jurkat cell lysate



Western Blotting

Image 2. Host: Rabbit Target Name: PTGER3 Sample Type:
Human Fetal Muscle Antibody Dilution: 1.0ug/ml