



Datasheet for ABIN2778270  
**anti-XRCC6 antibody (N-Term)**



[Go to Product page](#)

5 Images

Overview

Quantity:	100 µL
Target:	XRCC6
Binding Specificity:	N-Term
Reactivity:	Human, Mouse, Rat, Dog, Guinea Pig, Horse, Rabbit
Host:	Rabbit
Clonality:	Polyclonal
Conjugate:	This XRCC6 antibody is un-conjugated
Application:	Western Blotting (WB), Immunohistochemistry (IHC)

Product Details

Immunogen:	The immunogen is a synthetic peptide directed towards the N terminal region of human G22P1
Sequence:	NFKNIYVLQE LDNPGAKRIL ELDQFKGQQG QKRFQDMMGH GSDYSLSEVL
Predicted Reactivity:	Dog: 93%, Guinea Pig: 86%, Horse: 86%, Human: 100%, Mouse: 93%, Rabbit: 86%, Rat: 93%
Characteristics:	This is a rabbit polyclonal antibody against G22P1. It was validated on Western Blot and immunohistochemistry.
Purification:	Protein A purified

Target Details

Target:	XRCC6
Alternative Name:	G22P1 ( <a href="#">XRCC6 Products</a> )

## Target Details

---

Background:	<p>The p70/p80 autoantigen is a nuclear complex consisting of two subunits with molecular masses of approximately 70 and 80 kDa. The complex functions as a single-stranded DNA-dependent ATP-dependent helicase. The complex may be involved in the repair of nonhomologous DNA ends such as that required for double-strand break repair, transposition, and V(D)J recombination. High levels of autoantibodies to p70 and p80 have been found in some patients with systemic lupus erythematosus.</p> <p>Alias Symbols: ML8, KU70, TLAA, CTC75, CTCBF, G22P1</p> <p>Protein Interaction Partner: UBC, ELF3, EHF, CHD1L, SUMO2, SUMO3, MDM2, EMD, ATRX, RPA3, RPA2, RPA1, PCNA, EED, PRPF40A, SUPT5H, ST13, SET, PLOD2, PIN1, NARS, MSH2, RPSA, JUP, IMPDH1, MSH6, GART, DPYSL3, CTNNA1, SAMHD1, ATP6V1B2, GANAB, SWAP70, WBP4, HYOU1, FARSB, RANBP3, CUL2, CSDE1</p> <p>Protein Size: 609</p>
Molecular Weight:	70 kDa
Gene ID:	2547
NCBI Accession:	<a href="#">NM_001469</a> , <a href="#">NP_001460</a>
UniProt:	<a href="#">Q6FG89</a>
Pathways:	<a href="#">DNA Damage Repair</a>

## Application Details

---

Application Notes:	Optimal working dilutions should be determined experimentally by the investigator.
Comment:	Antigen size: 609 AA
Restrictions:	For Research Use only

## Handling

---

Format:	Liquid
Concentration:	Lot specific
Buffer:	Liquid. Purified antibody supplied in 1x PBS buffer with 0.09 % (w/v) sodium azide and 2 % sucrose.
Preservative:	Sodium azide
Precaution of Use:	This product contains Sodium azide: a POISONOUS AND HAZARDOUS SUBSTANCE which should be handled by trained staff only.

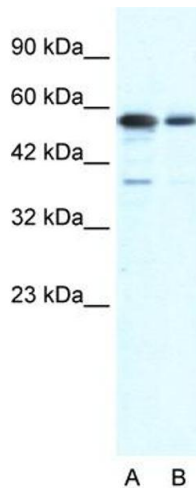
## Handling

Handling Advice: Avoid repeated freeze-thaw cycles.

Storage: -20 °C

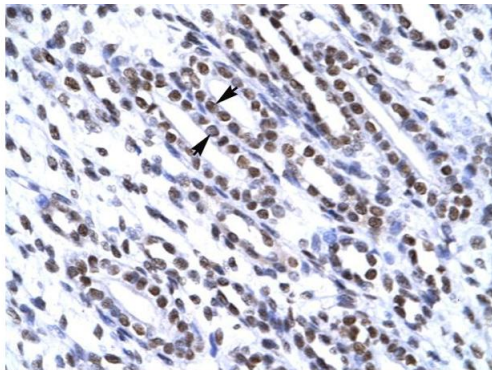
Storage Comment: For short term use, store at 2-8°C up to 1 week. For long term storage, store at -20°C in small aliquots to prevent freeze-thaw cycles.

## Images



### Western Blotting

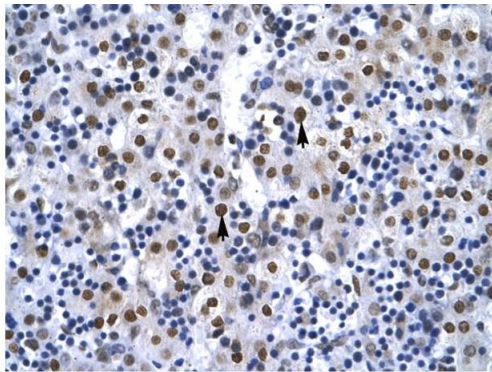
**Image 1.** WB Suggested Anti-G22P1 Antibody Titration: 0.6ug/ml ELISA Titer: 1:312500 Positive Control: HepG2 cell lysate XRCC6 is supported by BioGPS gene expression data to be expressed in HepG2



Rabbit Anti-G22P1 Antibody  
Catalog Number: ARP34117  
Lot Number: QC3780  
Paraffin Embedded Tissue: Human Kidney  
Cells with Positive label: Epithelial cells of renal tubule (Indicated with Arrows)  
Antibody Concentration: 4.0-8.0 µg/ml  
Magnification: 400X

### Immunohistochemistry

**Image 2.** Human kidney



Rabbit Anti-G22P1 Antibody  
Catalog Number: ARP34117  
Lot Number: QC3780  
Paraffin Embedded Tissue: Human Liver  
Cells with Positive label: Hepatocytes(Indicated with Arrows)  
Antibody Concentration: 4.0-8.0 µg/ml  
Magnification: 400X

### Immunohistochemistry

**Image 3.** Human Liver

Please check the [product details page](#) for more images. Overall 5 images are available for ABIN2778270.