

Datasheet for ABIN2778271
anti-XRCC5 antibody (C-Term)

5 Images

[Go to Product page](#)

Overview

Quantity:	100 µL
Target:	XRCC5
Binding Specificity:	C-Term
Reactivity:	Human, Mouse, Rat, Dog, Horse, Cow, Guinea Pig, Rabbit
Host:	Rabbit
Clonality:	Polyclonal
Conjugate:	This XRCC5 antibody is un-conjugated
Application:	Western Blotting (WB), Immunohistochemistry (IHC)

Product Details

Immunogen:	The immunogen is a synthetic peptide directed towards the C terminal region of human XRCC5
Sequence:	GITLITKEEA SGSSVTAEAA KKFLAPKDKP SGDTAAVFEE GGDVDDLLDM
Predicted Reactivity:	Cow: 92%, Dog: 92%, Guinea Pig: 93%, Horse: 100%, Human: 100%, Mouse: 85%, Rabbit: 93%, Rat: 100%
Characteristics:	This is a rabbit polyclonal antibody against XRCC5. It was validated on Western Blot and immunohistochemistry.
Purification:	Protein A purified

Target Details

Target:	XRCC5
---------	-------

Target Details

Alternative Name:	XRCC5 (XRCC5 Products)
Background:	<p>XRCC5 encodes the 80-kilodalton subunit of the Ku heterodimer protein which is also known as ATP-dependant DNA helicase II or DNA repair protein XRCC5. Ku is the DNA-binding component of the DNA-dependent protein kinase, and it functions together with the DNA ligase IV-XRCC4 complex in the repair of DNA double-strand break by non-homologous end joining and the completion of V(D)J recombination events. This gene functionally complements Chinese hamster xrs-6, a mutant defective in DNA double-strand break repair and in ability to undergo V(D)J recombination. A rare microsatellite polymorphism in this gene is associated with cancer in patients of varying radiosensitivity.</p> <p>Alias Symbols: KU80, KUB2, Ku86, NFIV, KARP1, KARP-1</p> <p>Protein Interaction Partner: HUWE1, UBC, EHF, ELF3, SUMO2, SUMO3, BRCA1, ATRX, Fbxl16, NEDD8, SUMO1, MDM2, RPA3, RPA2, RPA1, SUZ12, EED, RNF2, BMI1, EIF4B, C1QBP, RPL24, PLCB3, PRMT3, EIF3J, CUL2, CSDE1, SF1, TRMT1, SAMHD1, DNMBP, GANAB, HYOU1, NCL, NARS, MSH2, JUP, HSPA4, PARP1, TAR</p> <p>Protein Size: 732</p>
Molecular Weight:	83 kDa
Gene ID:	7520
NCBI Accession:	NM_021141 , NP_066964
UniProt:	Q4VBQ5
Pathways:	DNA Damage Repair

Application Details

Application Notes:	Optimal working dilutions should be determined experimentally by the investigator.
Comment:	Antigen size: 732 AA
Restrictions:	For Research Use only

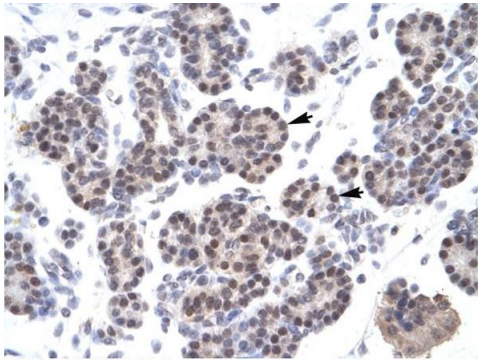
Handling

Format:	Liquid
Concentration:	Lot specific
Buffer:	Liquid. Purified antibody supplied in 1x PBS buffer with 0.09 % (w/v) sodium azide and 2 % sucrose.

Handling

Preservative:	Sodium azide
Precaution of Use:	This product contains Sodium azide: a POISONOUS AND HAZARDOUS SUBSTANCE which should be handled by trained staff only.
Handling Advice:	Avoid repeated freeze-thaw cycles.
Storage:	-20 °C
Storage Comment:	For short term use, store at 2-8°C up to 1 week. For long term storage, store at -20°C in small aliquots to prevent freeze-thaw cycles.

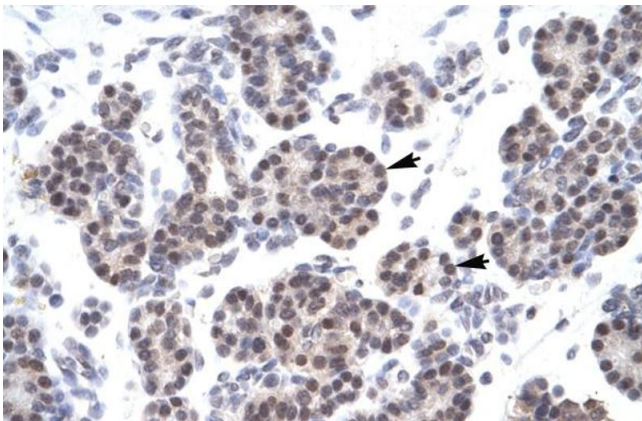
Images



Rabbit Anti-XRCC5 Antibody
Catalog Number: ARP34121
Lot Number: QC3586
Paraffin Embedded Tissue: Human Pancreas
Cells with Positive label: Epithelial cells of pancreatic acinus(Indicated with Arrows)
Antibody Concentration: 4.0-8.0 µg/ml
Magnification: 400X

Immunohistochemistry

Image 1. Human Pancreas



Immunohistochemistry

Image 2. Human Pancreas



Western Blotting

Image 3. WB Suggested Anti-XRCC5 Antibody Titration: 1.25ug/ml ELISA Titer: 1:12500 Positive Control: Jurkat cell lysate XRCC5 is strongly supported by BioGPS gene expression data to be expressed in Human Jurkat cells

Please check the [product details page](#) for more images. Overall 5 images are available for ABIN2778271.