

Datasheet for ABIN2778272  
**anti-LIG4 antibody (N-Term)**

## 4 Images

[Go to Product page](#)

## Overview

Quantity:	100 µL
Target:	LIG4
Binding Specificity:	N-Term
Reactivity:	Human, Mouse, Rat, Cow, Dog, Horse, Rabbit, Guinea Pig
Host:	Rabbit
Clonality:	Polyclonal
Conjugate:	This LIG4 antibody is un-conjugated
Application:	Western Blotting (WB), Immunohistochemistry (IHC)

## Product Details

Immunogen:	The immunogen is a synthetic peptide directed towards the N terminal region of human LIG4
Sequence:	DGERMQMHKD GDVYKYFSRN GYNYTDQFGA SPTEGSLTPF IHNAFKADIQ
Predicted Reactivity:	Cow: 92%, Dog: 93%, Guinea Pig: 93%, Horse: 86%, Human: 100%, Mouse: 92%, Rabbit: 93%, Rat: 93%
Characteristics:	This is a rabbit polyclonal antibody against LIG4. It was validated on Western Blot and immunohistochemistry.
Purification:	Protein A purified

## Target Details

Target:	LIG4
---------	------

## Target Details

Alternative Name:	LIG4 ( <a href="#">LIG4 Products</a> )
Background:	<p>LIG4 encodes a DNA ligase that joins single-strand breaks in a double-stranded polydeoxynucleotide in an ATP-dependent reaction. This protein is essential for V(D)J recombination and DNA double-strand break (DSB) repair through nonhomologous end joining (NHEJ). This protein forms a complex with the X-ray repair cross complementing protein 4 (XRCC4), and further interacts with the DNA-dependent protein kinase (DNA-PK). Both XRCC4 and DNA-PK are known to be required for NHEJ. The crystal structure of the complex formed by this protein and XRCC4 has been resolved. Defects in this gene are the cause of LIG4 syndrome.</p> <p>Protein Interaction Partner: XRCC4, UBC, AGO2, GZMK, ZSCAN18, PHF10, PNKP, TSFM, PRKDC, GUSBP3, NOMO3, FBLL1, PGP, ASPM, AMZ2P1, PPP1R18, COMMD1, ZNF428, AGAP4, WDR20, RPS19BP1, ZFAND2A, FIP1L1, CCDC176, VKORC1, COA7, SOWAHC, SEMA4G, ALMS1, WARS, UBE2L3, UBB, TPT1, TPI1, TP53BP1, TLE</p> <p>Protein Size: 911</p>
Molecular Weight:	104 kDa
Gene ID:	3981
NCBI Accession:	<a href="#">NM_002312</a> , <a href="#">NP_002303</a>
UniProt:	<a href="#">Q8IY66</a>
Pathways:	<a href="#">DNA Damage Repair</a> , <a href="#">Production of Molecular Mediator of Immune Response</a>

## Application Details

Application Notes:	Optimal working dilutions should be determined experimentally by the investigator.
Comment:	Antigen size: 911 AA
Restrictions:	For Research Use only

## Handling

Format:	Liquid
Concentration:	Lot specific
Buffer:	Liquid. Purified antibody supplied in 1x PBS buffer with 0.09 % (w/v) sodium azide and 2 % sucrose.
Preservative:	Sodium azide

## Handling

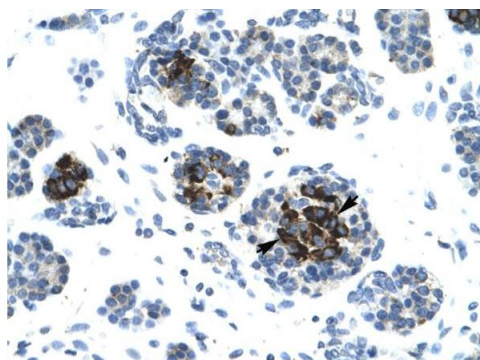
Precaution of Use:	This product contains Sodium azide: a POISONOUS AND HAZARDOUS SUBSTANCE which should be handled by trained staff only.
Handling Advice:	Avoid repeated freeze-thaw cycles.
Storage:	-20 °C
Storage Comment:	For short term use, store at 2-8°C up to 1 week. For long term storage, store at -20°C in small aliquots to prevent freeze-thaw cycles.

## Images



### Western Blotting

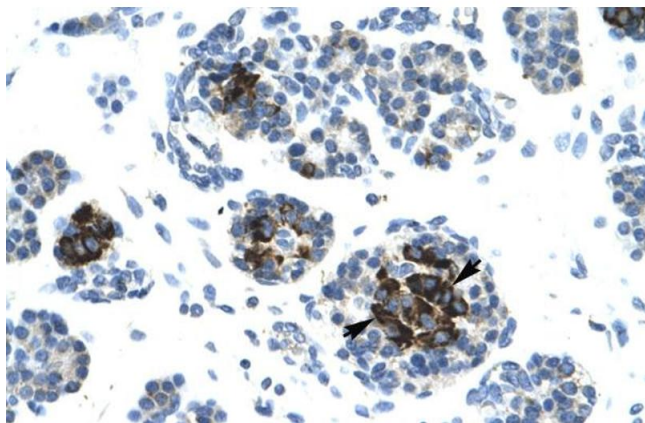
**Image 1.** WB Suggested Anti-LIG4 Antibody Titration:  
1.25ug/ml Positive Control: HepG2 cell lysate



Rabbit Anti-LIG4 Antibody  
Catalog Number: ARP34122  
Lot Number: QC3450  
Paraffin Embedded Tissue: Human Pancreas  
Cells with Positive label: Epithelial cells of pancreatic acinus (Indicated with Arrows)  
Antibody Concentration: 4.0-8.0 µg/ml  
Magnification: 400X

### Immunohistochemistry

**Image 2.** Human Pancreas



### Immunohistochemistry

**Image 3.** Human Pancreas

Please check the [product details page](#) for more images. Overall 4 images are available for ABIN2778272.