



[Go to Product page](#)

## Datasheet for ABIN2778276 anti-PREB antibody (N-Term)

2 Images

1 Publication

### Overview

Quantity:	100 µL
Target:	PREB
Binding Specificity:	N-Term
Reactivity:	Human, Mouse, Rat, Cow, Pig, Rabbit, Dog, Horse, Guinea Pig
Host:	Rabbit
Clonality:	Polyclonal
Conjugate:	This PREB antibody is un-conjugated
Application:	Western Blotting (WB), Immunohistochemistry (IHC)

### Product Details

Immunogen:	The immunogen is a synthetic peptide directed towards the N terminal region of human PREB
Sequence:	RVENLQAVQT DFSSDPLQKV VCFNHDNTLL ATGGTDGYVR VWKVPSLEKV
Predicted Reactivity:	Cow: 83%, Dog: 92%, Guinea Pig: 91%, Horse: 100%, Human: 100%, Mouse: 83%, Pig: 100%, Rabbit: 100%, Rat: 100%
Characteristics:	This is a rabbit polyclonal antibody against PREB. It was validated on Western Blot and immunohistochemistry.
Purification:	Affinity Purified

### Target Details

Target:	PREB
---------	------

## Target Details

---

Alternative Name:	PREB ( <a href="#">PREB Products</a> )
Background:	<p>PREB encodes a protein that specifically binds to a Pit1-binding element of the prolactin (PRL) promoter. This protein may act as a transcriptional regulator and is thought to be involved in some of the developmental abnormalities observed in patients with partial trisomy 2p.</p> <p>Alias Symbols: SEC12</p> <p>Protein Interaction Partner: UBC, WWOX, vpu, HSP90AA1, CORO1C, Preb, SMAD1, TGFBR1,</p> <p>Protein Size: 417</p>
Molecular Weight:	45 kDa
Gene ID:	10113
NCBI Accession:	<a href="#">NM_013388</a> , <a href="#">NP_037520</a>
UniProt:	<a href="#">Q9HCU5</a>
Pathways:	<a href="#">ER-Nucleus Signaling</a>

## Application Details

---

Application Notes:	Optimal working dilutions should be determined experimentally by the investigator.
Comment:	Antigen size: 417 AA
Restrictions:	For Research Use only

## Handling

---

Format:	Liquid
Concentration:	Lot specific
Buffer:	Liquid. Purified antibody supplied in 1x PBS buffer with 0.09 % (w/v) sodium azide and 2 % sucrose.
Preservative:	Sodium azide
Precaution of Use:	This product contains Sodium azide: a POISONOUS AND HAZARDOUS SUBSTANCE which should be handled by trained staff only.
Handling Advice:	Avoid repeated freeze-thaw cycles.
Storage:	-20 °C
Storage Comment:	For short term use, store at 2-8°C up to 1 week. For long term storage, store at -20°C in small aliquots to prevent freeze-thaw cycles.

## Publications

Product cited in: Gerhard, Wagner, Feingold, Shenmen, Grouse, Schuler, Klein, Old, Rasooly, Good, Guyer, Peck, Derge, Lipman, Collins, Jang, Sherry, Feolo, Misquitta, Lee, Rotmistrovsky, Greenhut, Schaefer, Buetow et al.: "The status, quality, and expansion of the NIH full-length cDNA project: the Mammalian Gene Collection (MGC). ..." in: **Genome research**, Vol. 14, Issue 10B, pp. 2121-7, (2004) ([PubMed](#)).

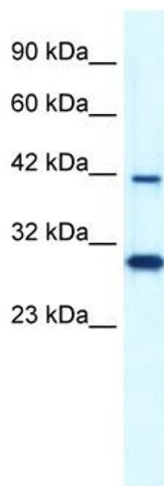
## Images



Rabbit Anti-PREB Antibody  
Catalog Number: ARP34130  
Lot Number: QC3453  
Paraffin Embedded Tissue: Human Heart  
Cells with Positive label: Myocardial cells (Indicated with Arrows)  
Antibody Concentration: 4.0-8.0 µg/ml  
Magnification: 400X

### Immunohistochemistry

**Image 1.** Rabbit Anti-PREB Antibody Paraffin Embedded Tissue: Human cardiac cell Cellular Data: Epithelial cells of renal tubule Antibody Concentration: 4.0-8.0 µg/ml Magnification: 400X



### Western Blotting

**Image 2.** WB Suggested Anti-PREB Antibody Titration: 0.2-1 µg/ml Positive Control: Raji cell lysate PREB is supported by BioGPS gene expression data to be expressed in Raji