



[Go to Product page](#)

Datasheet for ABIN2778282

anti-Membralin antibody (Middle Region)

2 Images

Overview

Quantity:	100 µL
Target:	Membralin (TMEM259)
Binding Specificity:	Middle Region
Reactivity:	Zebrafish (Danio rerio), Human, Guinea Pig, Rat, Dog, Mouse, Cow
Host:	Rabbit
Clonality:	Polyclonal
Conjugate:	This Membralin antibody is un-conjugated
Application:	Western Blotting (WB), Immunohistochemistry (IHC)

Product Details

Immunogen:	The immunogen is a synthetic peptide directed towards the middle region of human C19ORF6
Sequence:	YDDILMSSVK GLAENEENKG FLRNVVSGEH YRFVSMWMAR TSYLAFAIM
Predicted Reactivity:	Cow: 100%, Dog: 100%, Guinea Pig: 100%, Human: 100%, Mouse: 100%, Rat: 100%, Zebrafish: 100%
Characteristics:	This is a rabbit polyclonal antibody against C19ORF6. It was validated on Western Blot and immunohistochemistry.
Purification:	Protein A purified

Target Details

Target:	Membralin (TMEM259)
---------	---------------------

Target Details

Alternative Name: C19ORF6 ([TMEM259 Products](#))

Background: Human membralin is unique and does not share significant sequence homology with other human genes, only membralins of other species. The membralin gene contains 11 exons which encode at least two spliced variants in human cancer. The long form of membralin (membralin-1) comprises all 11 exons, encoding a protein of 620-amino acids long and the short form of membralin (membralin-3) contains all exons except for exon 10, encoding a protein of 408 amino acids. Expression of different membralin isoforms depends on tissue type. The long form, membralin-1, is expressed in ovarian and colorectal carcinomas but not in breast or pancreatic carcinomas, which express only the short splice form, membralin-3. Recent studies suggest that membralin is a novel tumor-associated marker in ovarian serous carcinomas

Alias Symbols: MBRL, ASBABP1, R32184_3, MEMBRALIN, C19ORF6

Protein Interaction Partner: ADRB2, UBC, TMEM173, ARSE,

Protein Size: 408

Molecular Weight: 46 kDa

Gene ID: 91304

NCBI Accession: [NM_033420](#), [NP_219488](#)

Application Details

Application Notes: Optimal working dilutions should be determined experimentally by the investigator.

Comment: Antigen size: 408 AA

Restrictions: For Research Use only

Handling

Format: Liquid

Concentration: Lot specific

Buffer: Liquid. Purified antibody supplied in 1x PBS buffer with 0.09 % (w/v) sodium azide and 2 % sucrose.

Preservative: Sodium azide

Precaution of Use: This product contains Sodium azide: a POISONOUS AND HAZARDOUS SUBSTANCE which should be handled by trained staff only.

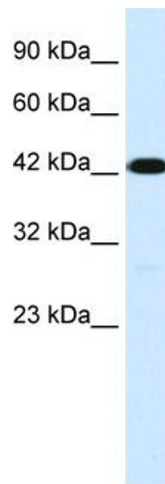
Handling Advice: Avoid repeated freeze-thaw cycles.

Handling

Storage: -20 °C

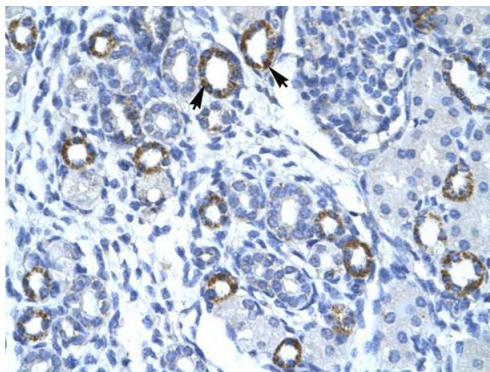
Storage Comment: For short term use, store at 2-8°C up to 1 week. For long term storage, store at -20°C in small aliquots to prevent freeze-thaw cycles.

Images



Western Blotting

Image 1. WB Suggested Anti-C19ORF6 Antibody Titration: 1.0ug/ml ELISA Titer: 1:62500 Positive Control: Jurkat cell lysate TMEM259 is strongly supported by BioGPS gene expression data to be expressed in Human Jurkat cells



Immunohistochemistry

Image 2. Human kidney

Rabbit Anti-C19orf6 Antibody
Catalog Number: ARP34137
Lot Number: QC3845
Paraffin Embedded Tissue: Human Kidney
Cells with Positive label: Epithelial cells of renal tubule(Indicated with Arrows)
Antibody Concentration: 4.0-8.0 µg/ml
Magnification: 400X