

Datasheet for ABIN2778283  
**anti-CUX1 antibody (N-Term)**[Go to Product page](#)

2 Images

1 Publication

## Overview

Quantity:	100 µL
Target:	CUX1
Binding Specificity:	N-Term
Reactivity:	Human, Mouse, Rat, Dog, Guinea Pig, Rabbit, Cow
Host:	Rabbit
Clonality:	Polyclonal
Conjugate:	This CUX1 antibody is un-conjugated
Application:	Western Blotting (WB)

## Product Details

Immunogen:	The immunogen is a synthetic peptide directed towards the N terminal region of human CUX1
Sequence:	VKNQEVTIKA LKEKIREYEQ TLKNQAETIA LEKEQKLQND FAEKERKLQE
Predicted Reactivity:	Cow: 100%, Dog: 100%, Guinea Pig: 100%, Human: 100%, Mouse: 100%, Rabbit: 100%, Rat: 100%
Characteristics:	This is a rabbit polyclonal antibody against CUX1. It was validated on Western Blot using a cell lysate as a positive control.
Purification:	Affinity Purified

## Target Details

Target:	CUX1
Alternative Name:	CUX1 ( <a href="#">CUX1 Products</a> )

## Target Details

Background:	<p>The protein encoded by this gene is a member of the homeodomain family of DNA binding proteins. It may regulate gene expression, morphogenesis, and differentiation and it may also play a role in the cell cycle progression. Several alternatively spliced tra</p> <p>Alias Symbols: CASP, CDP, CDP/Cut, CDP1, COY1, CUTL1, CUX, Clox, Cux/CDP, GOLIM6, Nbla10317, p100, p110, p200, p75</p> <p>Protein Interaction Partner: UBC, SOX2, TP53BP1, ECT2, EHMT2, KCND3, SUMO2, TLE4, MAX, CA12, CYTH2, SATB1, BIN1, CREBBP, SDC3, RB1, HMGB1, CDC25A, CDK1, CTSL, KAT2B, GOLGA5, ELAC2, RECQL5, CCNA1, CDK7,</p> <p>Protein Size: 678</p>
Molecular Weight:	77 kDa
Gene ID:	1523
NCBI Accession:	<a href="#">NM_001913</a> , <a href="#">NP_001904</a>
UniProt:	<a href="#">Q13948</a>
Pathways:	<a href="#">Cellular Glucan Metabolic Process</a>

## Application Details

Application Notes:	Optimal working dilutions should be determined experimentally by the investigator.
Comment:	Antigen size: 678 AA
Restrictions:	For Research Use only

## Handling

Format:	Liquid
Concentration:	Lot specific
Buffer:	Liquid. Purified antibody supplied in 1x PBS buffer with 0.09 % (w/v) sodium azide and 2 % sucrose.
Preservative:	Sodium azide
Precaution of Use:	This product contains Sodium azide: a POISONOUS AND HAZARDOUS SUBSTANCE which should be handled by trained staff only.
Handling Advice:	Avoid repeated freeze-thaw cycles.
Storage:	-20 °C

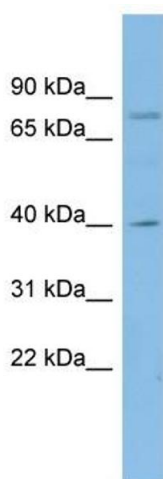
## Handling

Storage Comment: For short term use, store at 2-8°C up to 1 week. For long term storage, store at -20°C in small aliquots to prevent freeze-thaw cycles.

## Publications

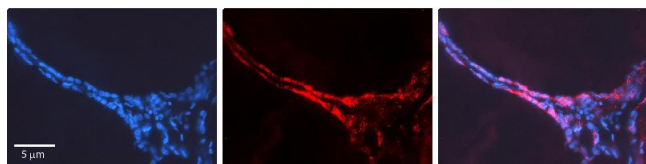
Product cited in: Yomo, Hongo, Kuroyanagi, Kobayashi: "Parkinsonism and midbrain dysfunction after shunt placement for obstructive hydrocephalus." in: **Journal of clinical neuroscience : official journal of the Neurosurgical Society of Australasia**, Vol. 13, Issue 3, pp. 373-8, (2006) ([PubMed](#)).

## Images



### Western Blotting

**Image 1.** WB Suggested Anti-CUX1 Antibody Titration: 0.2-1 ug/ml ELISA Titer: 1:62500 Positive Control: Human Spleen



### Immunohistochemistry

**Image 2.** Rabbit Anti-CUX1 Antibody Formalin Fixed Paraffin Embedded Tissue: Human Thyroid Gland Tissue Observed Staining: Cytoplasm Primary Antibody Concentration: 1:600 Other Working Concentrations: N/A Secondary Antibody: Donkey anti-Rabbit-Cy3 Secondary Antibody Concentration: 1:200 Magnification: 20X Exposure Time: 0.5 - 2.0 sec